



SZABO SCANDIC

Part of Europa Biosite

Produktinformation



Forschungsprodukte & Biochemikalien



Zellkultur & Verbrauchsmaterial



Diagnostik & molekulare Diagnostik



Laborgeräte & Service

Weitere Information auf den folgenden Seiten!
See the following pages for more information!



Lieferung & Zahlungsart

siehe unsere [Liefer- und Versandbedingungen](#)

Zuschläge

- Mindermengenzuschlag
- Trockeneiszuschlag
- Gefahrgutzuschlag
- Expressversand

SZABO-SCANDIC HandelsgmbH

Quellenstraße 110, A-1100 Wien

T. +43(0)1 489 3961-0

F. +43(0)1 489 3961-7

mail@szabo-scandic.com

www.szabo-scandic.com

[linkedin.com/company/szaboscandic](https://www.linkedin.com/company/szaboscandic) 



UK Office

Everest Biotech Ltd

Cherwell Innovation Centre
77 Heyford Park
Upper Heyford
Oxfordshire
OX25 5HD
UK

Enquiries:

info@everestbiotech.com

Sales:

sales@everestbiotech.com

Tech support:

support@everestbiotech.com

Tel: +44 (0)1869 238326

Fax: +44 (0)1869 238327

US Office

Everest Biotech c/o Abcore

405 Maple Street, Suite A106
Ramona,
CA 92065
USA

Inquiries:

info@everestbiotech.com

Sales:

usasales@everestbiotech.com

Tech support:

support@everestbiotech.com

Tel: 888-320-4628 (toll-free)

Fax: 888-841-9041

www.everestbiotech.com

**Research Use Only. Not for
diagnostic or therapeutic use.**

EB12748 - Goat Anti-dUTPase / DUT Antibody

Size: 100µg specific antibody in 200µl



Target Protein

Principal Names: DUT, deoxyuridine triphosphatase, dUTPase, dUTP nucleotidohydrolase, dUTP pyrophosphatase, deoxyuridine 5'-triphosphate nucleotidohydrolase, mitochondrial

Official Symbol: DUT

Accession Number(s): NP_001020419.1; NP_001939.1; NP_001020420.1

Human GeneID(s): [1854](#)

Important Comments: This antibody is expected to recognize all reported isoforms (NP_001020419.1; NP_001939.1; NP_001020420.1).

Immunogen

Peptide with sequence C-QLRFARLSEHATAPT, from the internal region of the protein sequence according to NP_001020419.1; NP_001939.1; NP_001020420.1.

Please note the [peptide](#) is available for sale.

Purification and Storage

Purified from goat serum by ammonium sulphate precipitation followed by antigen affinity chromatography using the immunizing peptide.

Supplied at 0.5 mg/ml in Tris saline, 0.02% sodium azide, pH7.3 with 0.5% bovine serum albumin.

Aliquot and store at -20°C. Minimize freezing and thawing.

Applications Tested

Peptide ELISA: antibody detection limit dilution 1:16000.

Western blot: Approx 20kDa band observed in lysates of cell lines HEK293 and HeLa (calculated MW of 17.7kDa according to NP_001939.1). Recommended concentration: 0.1-0.3µg/ml. Primary incubation was 1 hour.

IHC: Paraffin embedded Human Testis and Tonsil. Recommended concentration: 5µg/ml.

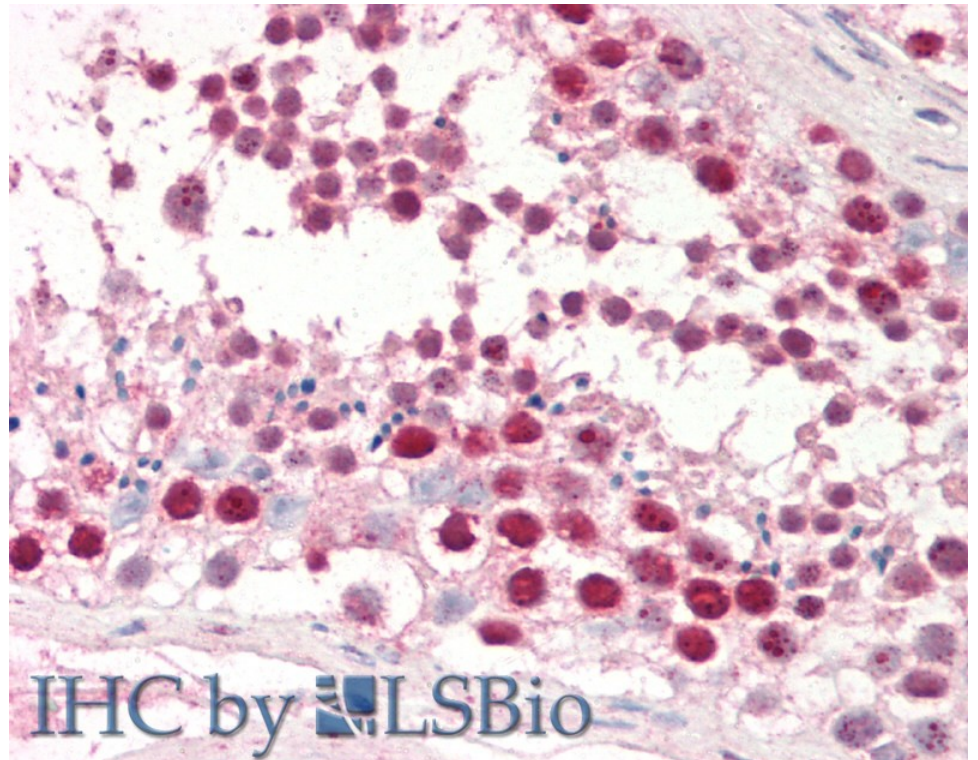
Species Reactivity

Tested: Human

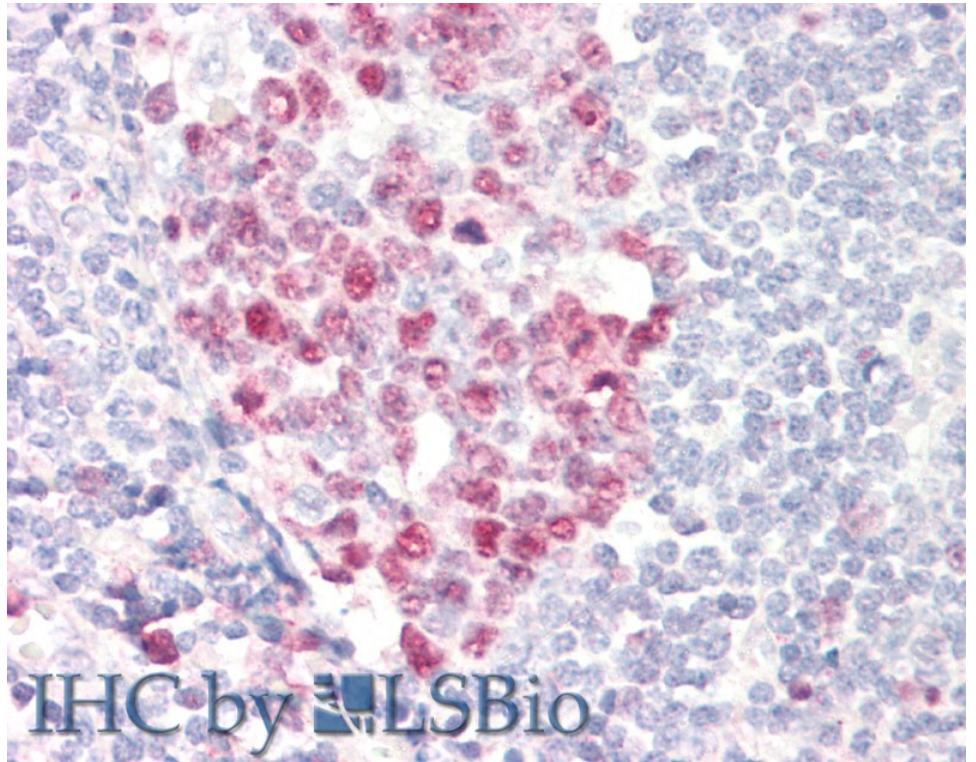
Expected from sequence similarity: Human, Pig, Cow



EB12748 (0.1µg/ml) staining of HEK293 (A) and HeLa (B) lysates (35µg protein in RIPA buffer). Detected by chemiluminescence.



EB12748 (5µg/ml) staining of paraffin embedded Human Testis. Steamed antigen retrieval with citrate buffer pH 6, AP-staining.



EB12748 (5µg/ml) staining of paraffin embedded Human Tonsil. Steamed antigen retrieval with citrate buffer pH 6, AP-staining.