



# SZABO SCANDIC

Part of Europa Biosite

## Produktinformation



Forschungsprodukte & Biochemikalien



Zellkultur & Verbrauchsmaterial



Diagnostik & molekulare Diagnostik



Laborgeräte & Service

Weitere Information auf den folgenden Seiten!  
See the following pages for more information!



### Lieferung & Zahlungsart

siehe unsere [Liefer- und Versandbedingungen](#)

### Zuschläge

- Mindermengenzuschlag
- Trockeneiszuschlag
- Gefahrgutzuschlag
- Expressversand

### SZABO-SCANDIC HandelsgmbH

Quellenstraße 110, A-1100 Wien

T. +43(0)1 489 3961-0

F. +43(0)1 489 3961-7

[mail@szabo-scandic.com](mailto:mail@szabo-scandic.com)

[www.szabo-scandic.com](http://www.szabo-scandic.com)

[linkedin.com/company/szaboscandic](https://www.linkedin.com/company/szaboscandic) 



## UK Office

### Everest Biotech Ltd

Cherwell Innovation Centre  
77 Heyford Park  
Upper Heyford  
Oxfordshire  
OX25 5HD  
UK

Enquiries:

[info@everestbiotech.com](mailto:info@everestbiotech.com)

Sales:

[sales@everestbiotech.com](mailto:sales@everestbiotech.com)

Tech support:

[support@everestbiotech.com](mailto:support@everestbiotech.com)

Tel: +44 (0)1869 238326

Fax: +44 (0)1869 238327

## US Office

### Everest Biotech c/o Abcore

405 Maple Street, Suite A106  
Ramona,  
CA 92065  
USA

Inquiries:

[info@everestbiotech.com](mailto:info@everestbiotech.com)

Sales:

[usasales@everestbiotech.com](mailto:usasales@everestbiotech.com)

Tech support:

[support@everestbiotech.com](mailto:support@everestbiotech.com)

Tel: 888-320-4628 (toll-free)

Fax: 888-841-9041

[www.everestbiotech.com](http://www.everestbiotech.com)

**Research Use Only. Not for  
diagnostic or therapeutic use.**

## EB12770 - Goat Anti-LIM domain only 3 / Lmo3 Antibody

Size: 100µg specific antibody in 200µl



### Target Protein

**Principal Names:** Lmo3, LIM domain only 3, AI854781, BB106490, Rbtn-3, Rbtn3, LIM domain only protein 3, LIM only 3, LMO-3, neuronal-specific transcription factor DAT1

**Official Symbol:** Lmo3

**Accession Number(s):** NP\_061110.2; NP\_001230540.1; NP\_001230541.1;  
NP\_001230542.1

**Human GeneID(s):** [55885](#)

**Non-Human GeneID(s):** 109593 (mouse)

### Immunogen

Peptide with sequence C-EGLMKEGYAPQVR, from the C Terminus of the protein sequence according to NP\_061110.2; NP\_001230540.1; NP\_001230541.1;  
NP\_001230542.1.

Please note the [peptide](#) is available for sale.

### Purification and Storage

Purified from goat serum by ammonium sulphate precipitation followed by antigen affinity chromatography using the immunizing peptide.

Supplied at 0.5 mg/ml in Tris saline, 0.02% sodium azide, pH7.3 with 0.5% bovine serum albumin.

Aliquot and store at -20°C. Minimize freezing and thawing.

### Applications Tested

**Peptide ELISA:** antibody detection limit dilution 1:128000.

**IHC:** This antibody has been successfully used in IHC on Mouse, PMID: 32562661.

**Immunofluorescence:** Strong expression of the protein seen in the cytoplasm and nuclei of HeLa cells. Recommended concentration: 10µg/ml.

**Flow Cytometry:** Flow cytometric analysis of HeLa cells. Recommended concentration: 10ug/ml.

### Species Reactivity

**Tested:** Human, Mouse

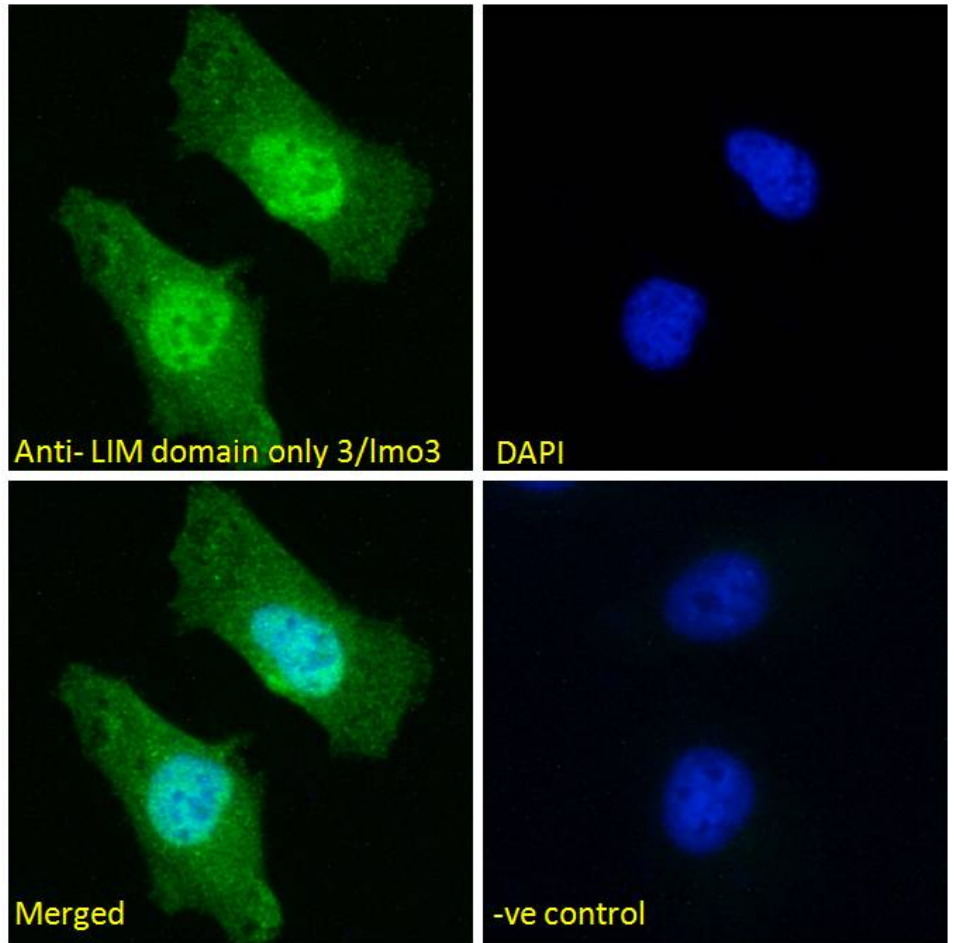
**Expected from sequence similarity:** Human, Mouse, Dog, Pig

### Specific Reference

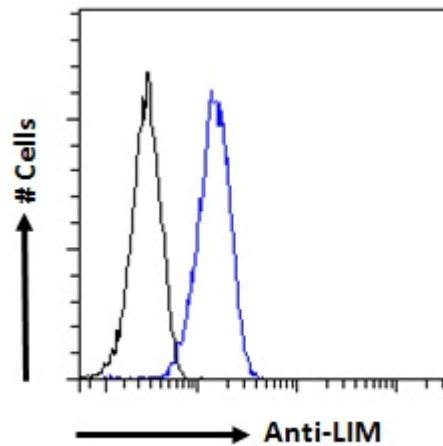
**This antibody has been successfully used in IHC on Mouse:**

Sara Brignani, Divya D A Raj, Ewoud R E Schmidt, Özge Düdükçü, Youri Adolfs, Anna A De Ruiter, Mateja Rybiczka-Tesulov, Marieke G Verhagen, Christiaan van der Meer, Mark H Broekhoven, Juan A Moreno-Bravo, Laurens M Grossouw, Emilie Dumontier, Jean-François Cloutier, Alain Chédotal, R Jeroen Pasterkamp  
Remotely Produced and Axon-Derived Netrin-1 Instructs GABAergic Neuron Migration and Dopaminergic Substantia Nigra Development.  
Neuron. 2020 Aug 19;107(4):684-702.

PMID: 32562661



EB12770 Immunofluorescence analysis of paraformaldehyde fixed HeLa cells, permeabilized with 0.15% Triton. Primary incubation 1hr (10ug/ml) followed by Alexa Fluor 488 secondary antibody (2ug/ml), showing nuclear and cytoplasmic staining. The nuclear stain is DAPI (blue). Negative control: Unimmunized goat IgG (10ug/ml) followed by Alexa Fluor 488 secondary antibody (2ug/ml).



EB12770 Flow cytometric analysis of paraformaldehyde fixed HeLa cells (blue line), permeabilized with 0.5% Triton. Primary incubation 1hr (10ug/ml) followed by Alexa Fluor 488 secondary antibody (1ug/ml). IgG control: Unimmunized goat IgG (black line) followed by Alexa Fluor 488 secondary antibody.