



SZABO SCANDIC

Part of Europa Biosite

Produktinformation



Forschungsprodukte & Biochemikalien



Zellkultur & Verbrauchsmaterial



Diagnostik & molekulare Diagnostik



Laborgeräte & Service

Weitere Information auf den folgenden Seiten!
See the following pages for more information!



Lieferung & Zahlungsart

siehe unsere [Liefer- und Versandbedingungen](#)

Zuschläge

- Mindermengenzuschlag
- Trockeneiszuschlag
- Gefahrgutzuschlag
- Expressversand

SZABO-SCANDIC HandelsgmbH

Quellenstraße 110, A-1100 Wien

T. +43(0)1 489 3961-0

F. +43(0)1 489 3961-7

mail@szabo-scandic.com

www.szabo-scandic.com

[linkedin.com/company/szaboscandic](https://www.linkedin.com/company/szaboscandic) 



UK Office

Everest Biotech Ltd

Cherwell Innovation Centre
77 Heyford Park
Upper Heyford
Oxfordshire
OX25 5HD
UK

Enquiries:

info@everestbiotech.com

Sales:

sales@everestbiotech.com

Tech support:

support@everestbiotech.com

Tel: +44 (0)1869 238326

Fax: +44 (0)1869 238327

US Office

Everest Biotech c/o Abcore

405 Maple Street, Suite A106
Ramona,
CA 92065
USA

Inquiries:

info@everestbiotech.com

Sales:

usasales@everestbiotech.com

Tech support:

support@everestbiotech.com

Tel: 888-320-4628 (toll-free)

Fax: 888-841-9041

www.everestbiotech.com

**Research Use Only. Not for
diagnostic or therapeutic use.**

EB12834 - Goat Anti-HSP60 / HSPD1 (aa333-344) Antibody

Size: 100µg specific antibody in 200µl



Target Protein

Principal Names: HSPD1, heat shock 60kDa protein 1 (chaperonin), CPN60, GROEL, HLD4, HSP-60, HSP60, HSP65, HuCHA60, SPG13, 60 kDa chaperonin, 60 kDa heat shock protein, mitochondrial, P60 lymphocyte protein, chaperonin 60, heat shock protein 65, mitochondrial matrix prote

Official Symbol: HSPD1

Accession Number(s): NP_002147.2

Human GeneID(s): [3329](#)

Important Comments: Reported variants represent identical protein: NP_955472.1, NP_002147.2.

Immunogen

Peptide with sequence C-NLEDVQPHDLGK, from the internal region of the protein sequence according to NP_002147.2.

Please note the [peptide](#) is available for sale.

Purification and Storage

Purified from goat serum by ammonium sulphate precipitation followed by antigen affinity chromatography using the immunizing peptide.

Supplied at 0.5 mg/ml in Tris saline, 0.02% sodium azide, pH7.3 with 0.5% bovine serum albumin.

Aliquot and store at -20°C. Minimize freezing and thawing.

Applications Tested

Peptide ELISA: antibody detection limit dilution 1:64000.

Western blot: Approx 60kDa band observed in Human and Pig Heart, Kidney and Liver and in Rat Kidney lysates (calculated MW of 61.1kDa according to Human NP_002147.2 and 60.9kDa according to Pig NP_001241645.1 and Rat NP_071565.2). Recommended concentration: 0.01-0.1µg/ml. Primary incubation 1 hour at room temperature.

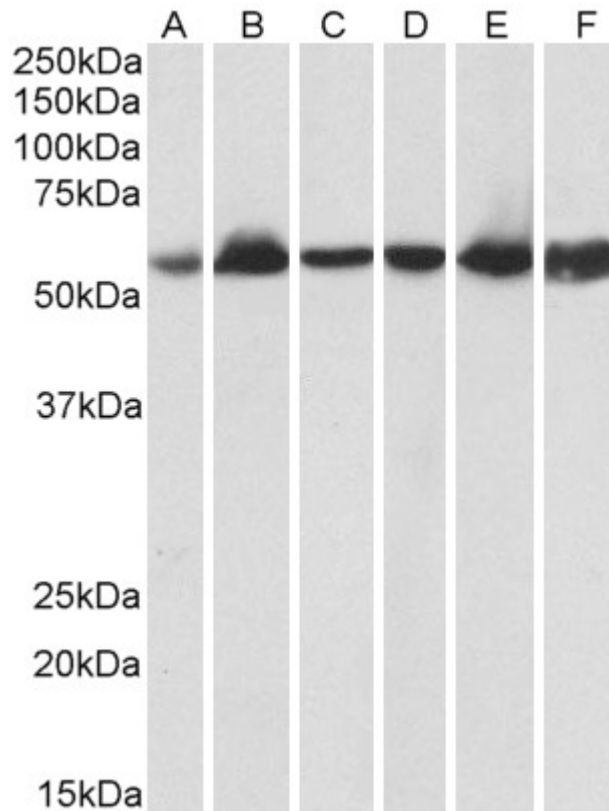
IHC: Paraffin embedded Human Kidney. Recommended concentration: 5µg/ml.

Immunofluorescence: Strong expression of the protein seen in the mitochondria of HeLa cells and in the cytoplasm of A431 cells. Recommended concentration: 10µg/ml.

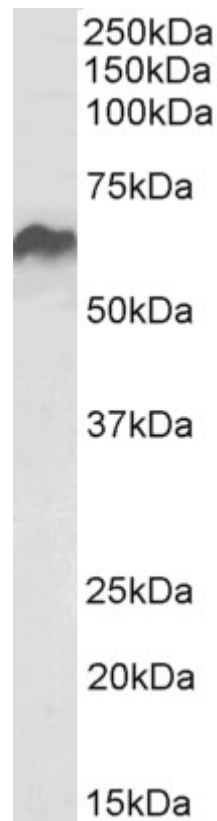
Species Reactivity

Tested: Human, Rat, Pig

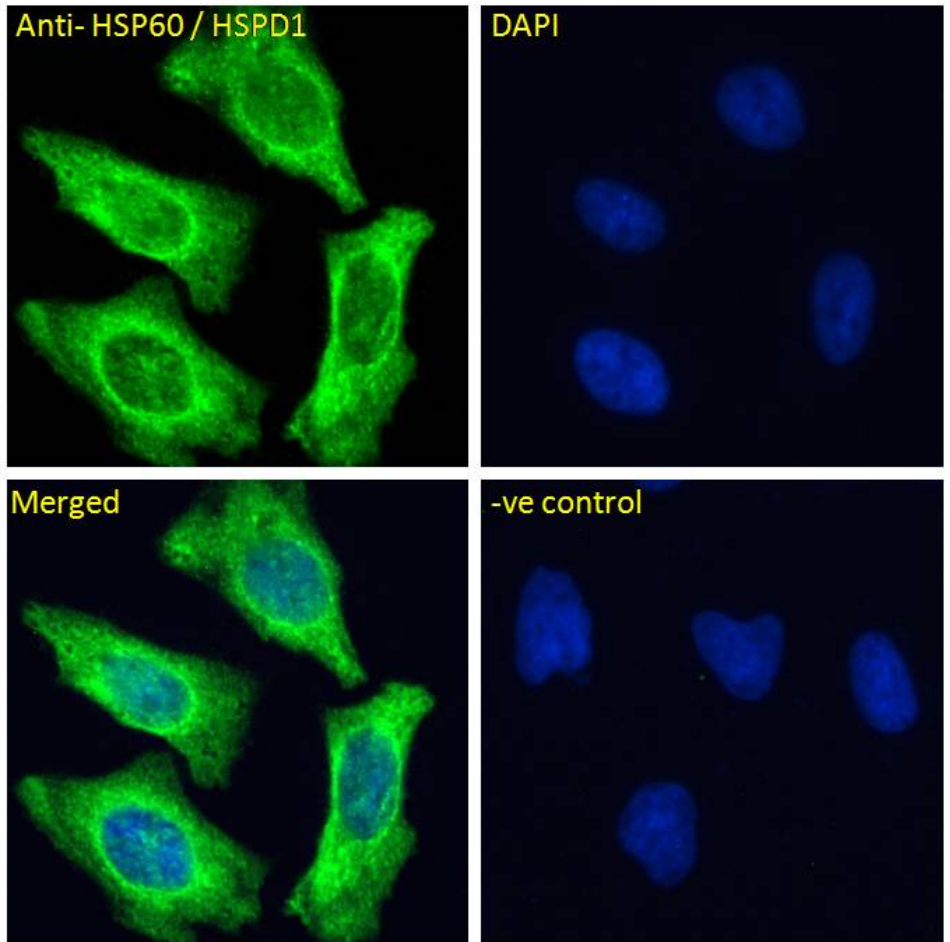
Expected from sequence similarity: Human, Dog, Pig, Cow



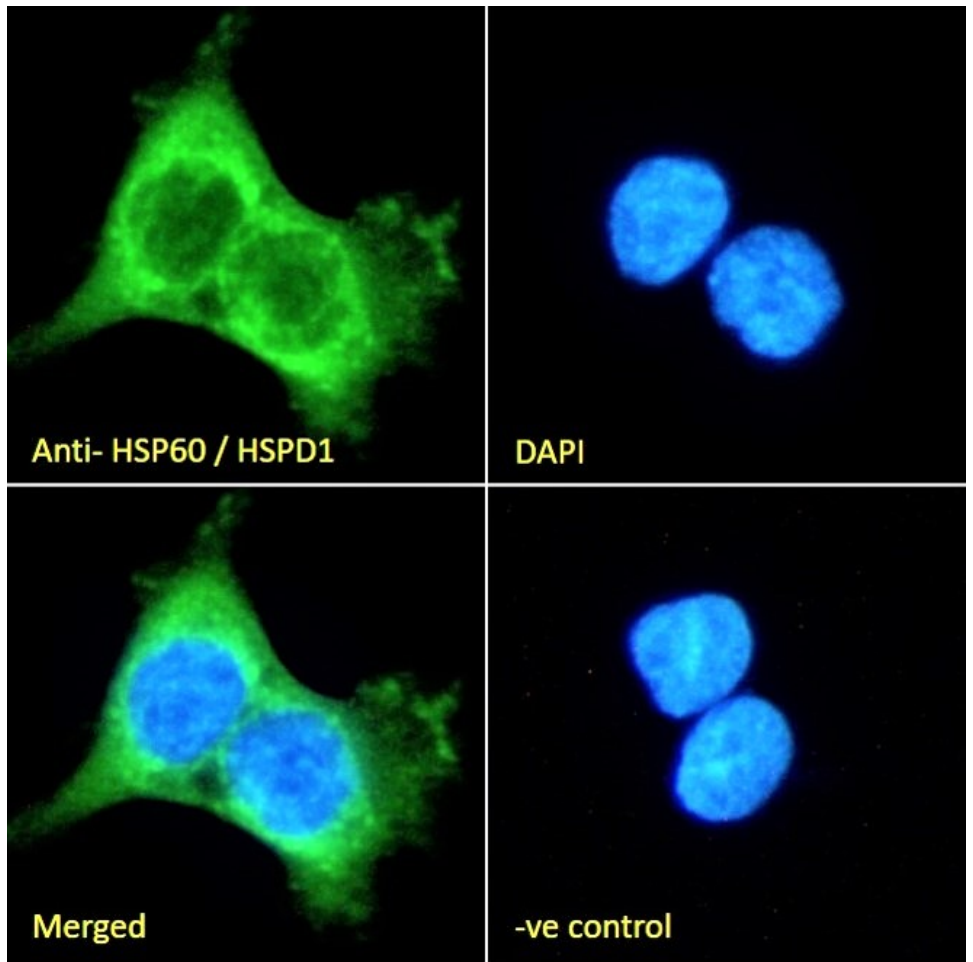
EB12834 (0.03 μ g/ml) staining of Human Heart (A), Kidney (B) and Liver (C) lysate and in Pig Heart (D), Kidney (E) and Liver (F) lysate (35 μ g protein in RIPA buffer). Detected by chemiluminescence.



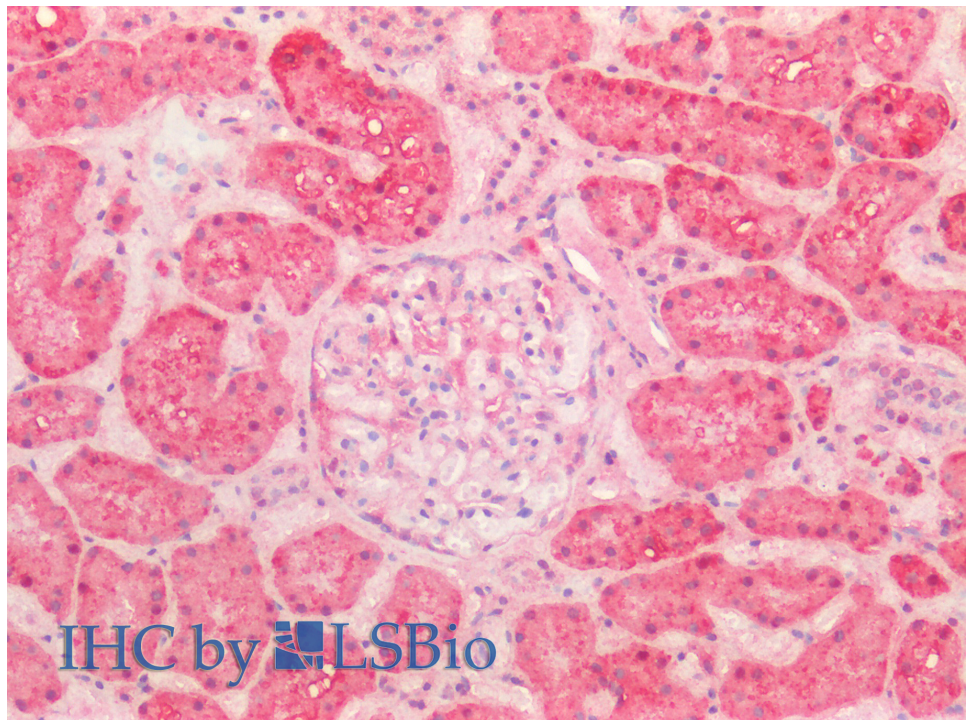
EB12834 (0.1 μ g/ml) staining of Rat Kidney lysate (35 μ g protein in RIPA buffer). Detected by chemiluminescence.



EB12834 Immunofluorescence analysis of paraformaldehyde fixed HeLa cells, permeabilized with 0.15% Triton. Primary incubation 1hr (10ug/ml) followed by Alexa Fluor 488 secondary antibody (4ug/ml), showing Mitochondrial staining. The nuclear stain is DAPI (blue). Negative control: Unimmunized goat IgG (10ug/ml) followed by Alexa Fluor 488 secondary antibody (4ug/ml).



EB12834 Immunofluorescence analysis of paraformaldehyde fixed A431 cells, permeabilized with 0.15% Triton. Primary incubation 1hr (10ug/ml) followed by Alexa Fluor 488 secondary antibody (2ug/ml), showing cytoplasmic staining. The nuclear stain is DAPI (blue). Negative control: Unimmunized goat IgG (10ug/ml) followed by Alexa Fluor 488 secondary antibody (2ug/ml).



EB12834 (5µg/ml) staining of paraffin embedded Human Kidney. Steamed antigen retrieval with citrate buffer pH 6, AP-staining.