



# SZABO SCANDIC

Part of Europa Biosite

## Produktinformation



Forschungsprodukte & Biochemikalien



Zellkultur & Verbrauchsmaterial



Diagnostik & molekulare Diagnostik



Laborgeräte & Service

Weitere Information auf den folgenden Seiten!  
See the following pages for more information!



### Lieferung & Zahlungsart

siehe unsere [Liefer- und Versandbedingungen](#)

### Zuschläge

- Mindermengenzuschlag
- Trockeneiszuschlag
- Gefahrgutzuschlag
- Expressversand

### SZABO-SCANDIC HandelsgmbH

Quellenstraße 110, A-1100 Wien

T. +43(0)1 489 3961-0

F. +43(0)1 489 3961-7

[mail@szabo-scandic.com](mailto:mail@szabo-scandic.com)

[www.szabo-scandic.com](http://www.szabo-scandic.com)

[linkedin.com/company/szaboscandic](https://www.linkedin.com/company/szaboscandic) 



## UK Office

### Everest Biotech Ltd

Cherwell Innovation Centre  
77 Heyford Park  
Upper Heyford  
Oxfordshire  
OX25 5HD  
UK

Enquiries:

[info@everestbiotech.com](mailto:info@everestbiotech.com)

Sales:

[sales@everestbiotech.com](mailto:sales@everestbiotech.com)

Tech support:

[support@everestbiotech.com](mailto:support@everestbiotech.com)

Tel: +44 (0)1869 238326

Fax: +44 (0)1869 238327

## US Office

### Everest Biotech c/o Abcore

405 Maple Street, Suite A106  
Ramona,  
CA 92065  
USA

Inquiries:

[info@everestbiotech.com](mailto:info@everestbiotech.com)

Sales:

[usasales@everestbiotech.com](mailto:usasales@everestbiotech.com)

Tech support:

[support@everestbiotech.com](mailto:support@everestbiotech.com)

Tel: 888-320-4628 (toll-free)

Fax: 888-841-9041

[www.everestbiotech.com](http://www.everestbiotech.com)

**Research Use Only. Not for  
diagnostic or therapeutic use.**

## EB12857 - Goat Anti-HSPA5 / GRP78 Antibody

Size: 100µg specific antibody in 200µl



### Target Protein

**Principal Names:** HSPA5, heat shock 70kDa protein 5 (glucose-regulated protein, 78kDa), BIP, GRP78, HEL-S-89n, MIF2, 78 kDa glucose-regulated protein, endoplasmic reticulum lumenal Ca(2+)-binding protein grp78, epididymis secretory sperm binding protein Li 89n, immunoglobulin

**Official Symbol:** HSPA5

**Accession Number(s):** NP\_005338.1

**Human GeneID(s):** [3309](#)

### Immunogen

Peptide with sequence C-ESHQDADIEDFK, from the internal region (near C Terminus) of the protein sequence according to NP\_005338.1.

Please note the [peptide](#) is available for sale.

### Purification and Storage

Purified from goat serum by ammonium sulphate precipitation followed by antigen affinity chromatography using the immunizing peptide.

Supplied at 0.5 mg/ml in Tris saline, 0.02% sodium azide, pH7.3 with 0.5% bovine serum albumin.

Aliquot and store at -20°C. Minimize freezing and thawing.

### Applications Tested

**Peptide ELISA:** antibody detection limit dilution 1:16000.

**Western blot:** Approx 75kDa band observed in lysates of cell lines HepG2 and MCF7 and in Mouse Liver lysates, and approx. 80kDa band in Mouse Testis and Rat Brain lysates (calculated MW of 72.3kDa according to Human NP\_005338.1, Mouse NP\_071705.3 and Rat NP\_037215.1). This molecular weight is routinely observed by other sources.

Recommended concentration: 0.3-1µg/ml. Primary incubation was 1 hour.

**IHC:** Paraffin embedded Human Brain (Cortex). Recommended concentration: 5µg/ml.

**Immunofluorescence:** Expression of the protein seen in the cytoplasm of HeLa cells.

Recommended concentration: 5µg/ml

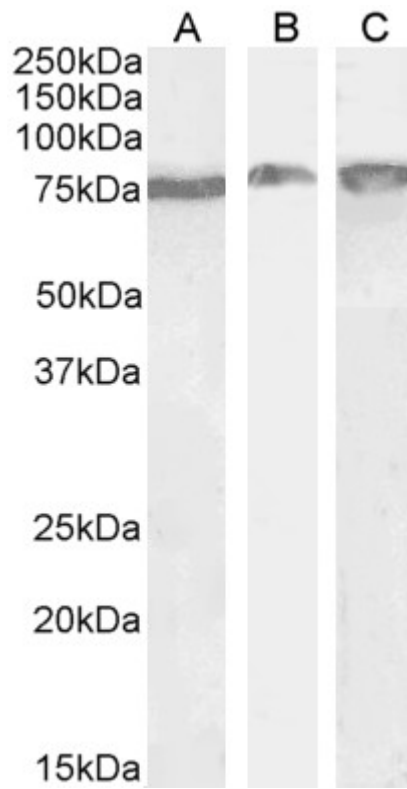
### Species Reactivity

**Tested:** Human, Mouse, Rat

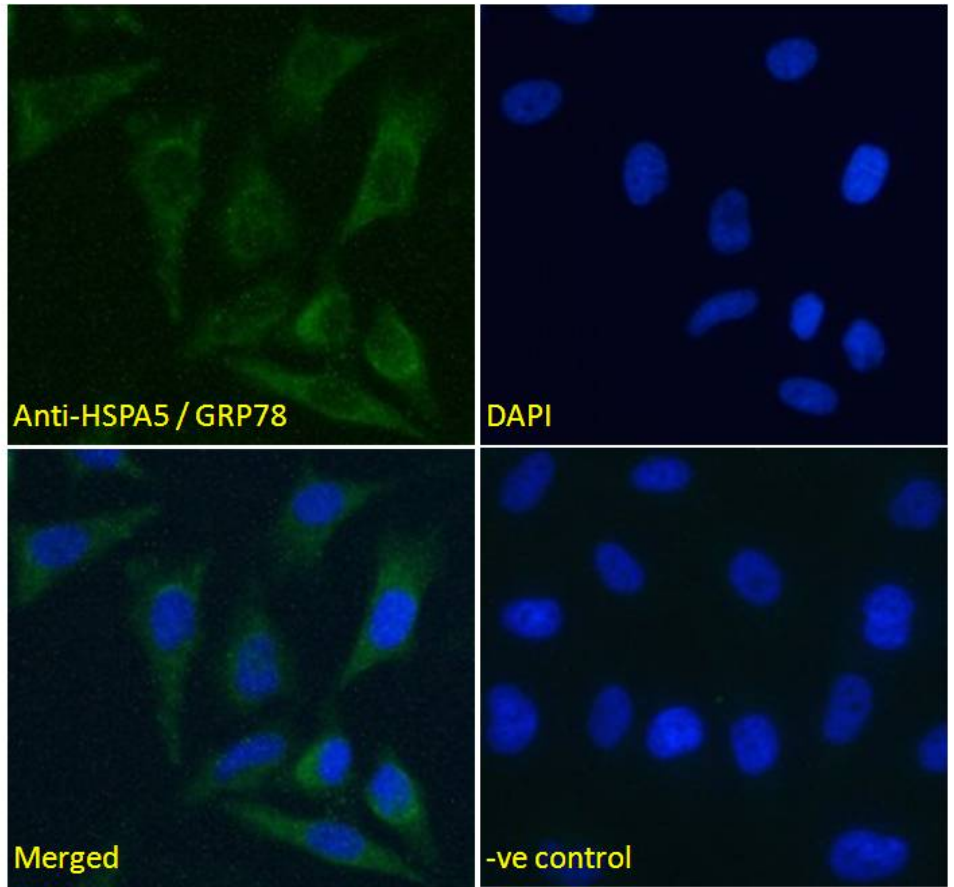
**Expected from sequence similarity:** Human



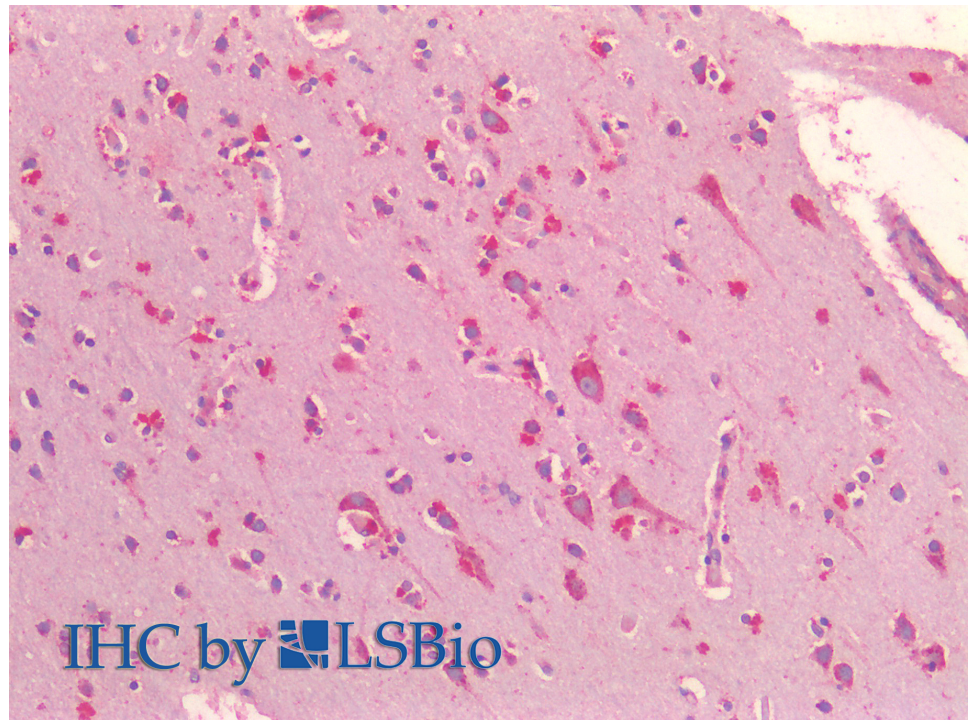
EB12857 (1 $\mu$ g/ml) staining of HepG2 (A) and MCF7 (B) lysates (35 $\mu$ g protein in RIPA buffer). Detected by chemiluminescence.



EB12857 (0.3 $\mu$ g/ml) staining of Mouse Liver (A) and Testes (B) and (0.5 $\mu$ g/ml) Rat Brain (C) lysate (35 $\mu$ g protein in RIPA buffer). Detected by chemiluminescence.



EB12857 Immunofluorescence analysis of paraformaldehyde fixed HeLa cells, permeabilized with 0.15% Triton. Primary incubation 1hr (5ug/ml) followed by Alexa Fluor 488 secondary antibody (2ug/ml), showing cytoplasmic staining. The nuclear stain is DAPI (blue). Negative control: Unimmunized goat IgG (5ug/ml) followed by Alexa Fluor 488 secondary antibody (2ug/ml).



EB12857 (5µg/ml) staining of paraffin embedded Human Cortex. Steamed antigen retrieval with citrate buffer pH 6, AP-staining.