



SZABO SCANDIC

Part of Europa Biosite

Produktinformation



Forschungsprodukte & Biochemikalien



Zellkultur & Verbrauchsmaterial



Diagnostik & molekulare Diagnostik



Laborgeräte & Service

Weitere Information auf den folgenden Seiten!
See the following pages for more information!



Lieferung & Zahlungsart

siehe unsere [Liefer- und Versandbedingungen](#)

Zuschläge

- Mindermengenzuschlag
- Trockeneiszuschlag
- Gefahrgutzuschlag
- Expressversand

SZABO-SCANDIC HandelsgmbH

Quellenstraße 110, A-1100 Wien

T. +43(0)1 489 3961-0

F. +43(0)1 489 3961-7

mail@szabo-scandic.com

www.szabo-scandic.com

[linkedin.com/company/szaboscandic](https://www.linkedin.com/company/szaboscandic) 



UK Office

Everest Biotech Ltd

Cherwell Innovation Centre
77 Heyford Park
Upper Heyford
Oxfordshire
OX25 5HD
UK

Enquiries:

info@everestbiotech.com

Sales:

sales@everestbiotech.com

Tech support:

support@everestbiotech.com

Tel: +44 (0)1869 238326

Fax: +44 (0)1869 238327

US Office

Everest Biotech c/o Abcore

405 Maple Street, Suite A106
Ramona,
CA 92065
USA

Inquiries:

info@everestbiotech.com

Sales:

usasales@everestbiotech.com

Tech support:

support@everestbiotech.com

Tel: 888-320-4628 (toll-free)

Fax: 888-841-9041

www.everestbiotech.com

**Research Use Only. Not for
diagnostic or therapeutic use.**

EB12885 - Goat Anti-PRKD1 (aa233-246) Antibody

Size: 100µg specific antibody in 200µl



Target Protein

Principal Names: PRKD1, PKC-MU, PKCM, PKD, PRKCM;

Official Symbol: PRKD1

Accession Number(s): NP_002733.2

Human GeneID(s): [5587](#)

Non-Human GeneID(s): 18760 (mouse), 85421 (rat)

Immunogen

Peptide with sequence C-QKSPSEFIGREKR, from the internal region of the protein sequence according to NP_002733.2.

Please note the [peptide](#) is available for sale.

Purification and Storage

Purified from goat serum by ammonium sulphate precipitation followed by antigen affinity chromatography using the immunizing peptide.

Supplied at 0.5 mg/ml in Tris saline, 0.02% sodium azide, pH7.3 with 0.5% bovine serum albumin.

Aliquot and store at -20°C. Minimize freezing and thawing.

Applications Tested

Peptide ELISA: antibody detection limit dilution 1:128000.

Western blot: In transfected HEK293 transiently expressing Human PKD1 (DYKDDDDK tagged), a band of approx. 100kDa is observed. The same band is observed using anti-DYKDDDDK antibody and no bands are observed in cells transiently expressing Human PKD2 or PKD3. Recommended concentration 0.1-0.3ug/ml

IHC: This antibody has been confirmed in human pancreatic adenocarcinoma (PDA) according to Döppler et al, Sci Rep. 2016 Sep 21;6:33758 PMID 27649783.

Immunoprecipitation: PKD1 was immunoprecipitated from Hek293T cells (as above). Immunoprecipitates were analyzed by Western Blot probed with the same antibody.

Species Reactivity

Tested: Human

Expected from sequence similarity: Human, Mouse, Rat, Pig

Specific Reference

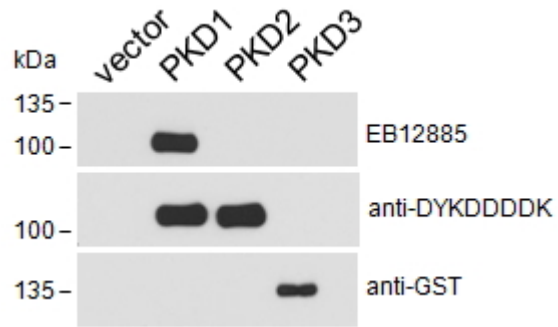
This antibody has been successfully used in the following paper:

Döppler H, Panayiotou R, Reid EM, Maimo W, Bastea L, Storz P.

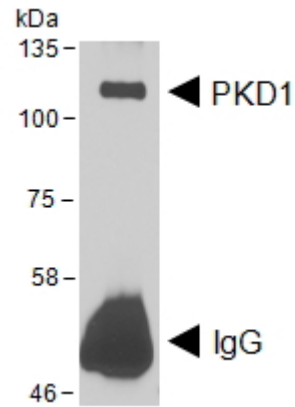
The PRKD1 promoter is a target of the Kras-NF-κB pathway in pancreatic cancer.

Sci Rep. 2016 Sep 21;6:33758.

PMID: 27649783



HEK293 lysate overexpressing Human DYKDDDDK-tagged PKD1, Human DYKDDDDK-tagged PKD2 or Human GST-tagged PKD3 probed with EB12885 (0.1ug/ml) in top panel, probed with anti-DYKDDDDK in middle panel and probed with anti-GST in bottom panel. Data kindly obtained from Dr Peter Storz, Mayo Clinic, USA.



HEK293 lysate overexpressing Human DYKDDDDK-tagged PKD1 was used to immunoprecipitate PKD1 with 2ug EB12885. The precipitate was subsequently probed in Western blot using EB12885 at 1ug/ml. The secondary anti-goat picks up the heavy chain of EB12885 used for the immunoprecipitation (annotated as IgG). Data kindly obtained from Dr Peter Storz, Mayo Clinic, USA