



SZABO SCANDIC

Part of Europa Biosite

Produktinformation



Forschungsprodukte & Biochemikalien



Zellkultur & Verbrauchsmaterial



Diagnostik & molekulare Diagnostik



Laborgeräte & Service

Weitere Information auf den folgenden Seiten!
See the following pages for more information!



Lieferung & Zahlungsart

siehe unsere [Liefer- und Versandbedingungen](#)

Zuschläge

- Mindermengenzuschlag
- Trockeneiszuschlag
- Gefahrgutzuschlag
- Expressversand

SZABO-SCANDIC HandelsgmbH

Quellenstraße 110, A-1100 Wien

T. +43(0)1 489 3961-0

F. +43(0)1 489 3961-7

mail@szabo-scandic.com

www.szabo-scandic.com

[linkedin.com/company/szaboscandic](https://www.linkedin.com/company/szaboscandic) 



UK Office

Everest Biotech Ltd

Cherwell Innovation Centre
77 Heyford Park
Upper Heyford
Oxfordshire
OX25 5HD
UK

Enquiries:

info@everestbiotech.com

Sales:

sales@everestbiotech.com

Tech support:

support@everestbiotech.com

Tel: +44 (0)1869 238326

Fax: +44 (0)1869 238327

US Office

Everest Biotech c/o Abcore

405 Maple Street, Suite A106
Ramona,
CA 92065
USA

Inquiries:

info@everestbiotech.com

Sales:

usasales@everestbiotech.com

Tech support:

support@everestbiotech.com

Tel: 888-320-4628 (toll-free)

Fax: 888-841-9041

www.everestbiotech.com

**Research Use Only. Not for
diagnostic or therapeutic use.**

EB13087 - Goat Anti-ACE2 (N Terminal) Antibody

Size: 100µg specific antibody in 200µl



Target Protein

Principal Names: ACE 2 antibody, ACE related carboxypeptidase antibody, ACE-related carboxypeptidase antibody, ACE2 antibody, ACE2_HUMAN antibody, ACEH antibody, Angiotensin converting enzyme 2 antibody, Angiotensin converting enzyme homolog antibody, Angiotensin converting enzyme like protein antibody, Angiotensin I Converting Enzyme (peptidyl dipeptidase A)

Official Symbol: ACE2

Accession Number(s): NP_001358344.1

Human GeneID(s): [59272](#)

Immunogen

Peptide with sequence PROPRIETARY,-C, from the N Terminus of the protein sequence according to NP_001358344.1.

Please note the [peptide](#) is available for sale.

Purification and Storage

Purified from goat serum by ammonium sulphate precipitation followed by antigen affinity chromatography using the immunizing peptide.

Supplied at 0.5 mg/ml in Tris saline, 0.02% sodium azide, pH7.3 with 0.5% bovine serum albumin.

Aliquot and store at -20°C. Minimize freezing and thawing.

Applications Tested

Peptide ELISA: antibody detection limit dilution 1:128000.

Western blot: Approx 90-100kDa band observed in lysates of cell line HepG2 (calculated MW of 92.4kDa according to NP_001358344.1). Recommended concentration 0.5-2ug/ml. Primary incubation 1 hour at room temperature.

Approx 100kDa band was also observed on full-length recombinant Human ACE2 protein. Recommended concentration 0.01-0.1ug/ml. Primary incubation 1 hour at room temperature.

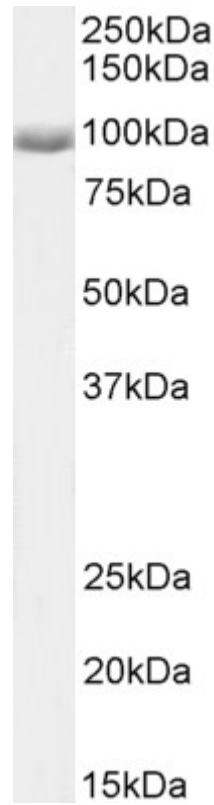
IHC: Paraffin embedded Human Testis. Recommended concentration: 8µg/ml.

Flow Cytometry: Flow cytometric analysis of HepG2 cells.. Recommended concentration: 10ug/ml.

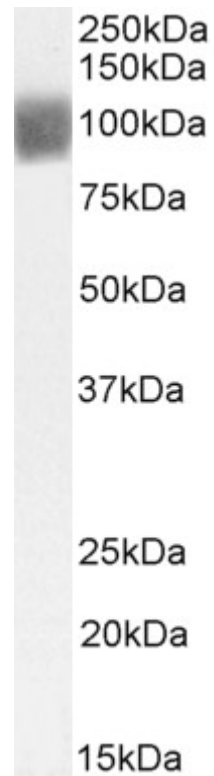
Species Reactivity

Tested: Human

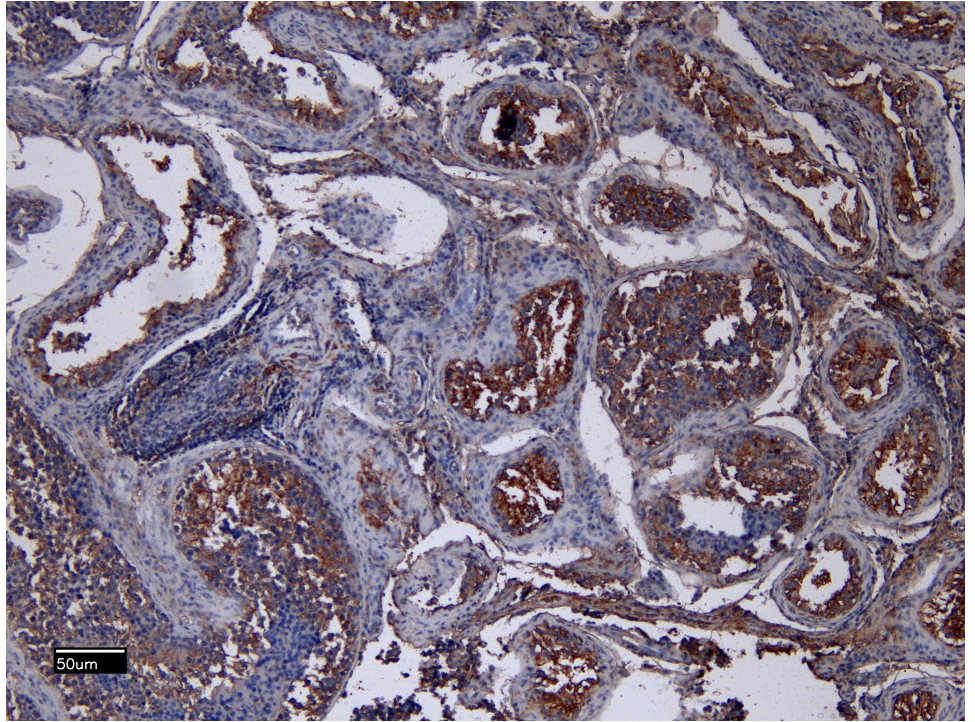
Expected from sequence similarity: Human



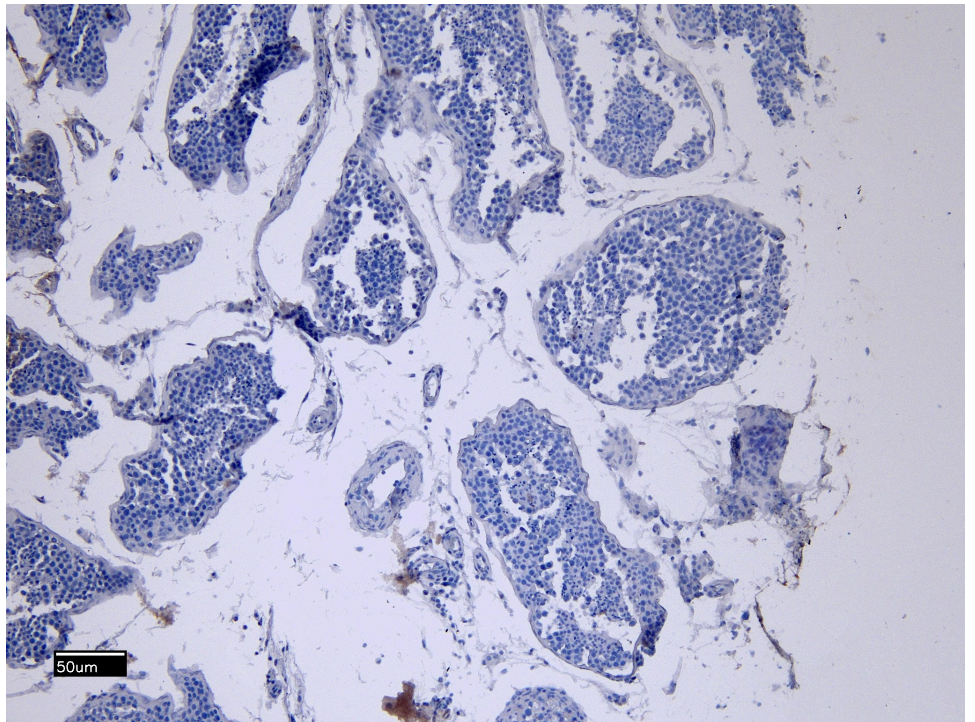
EB13087 (1.5 μ g/ml) staining of HepG2 cell lysate (35 μ g protein in RIPA buffer). Detected by chemiluminescence.



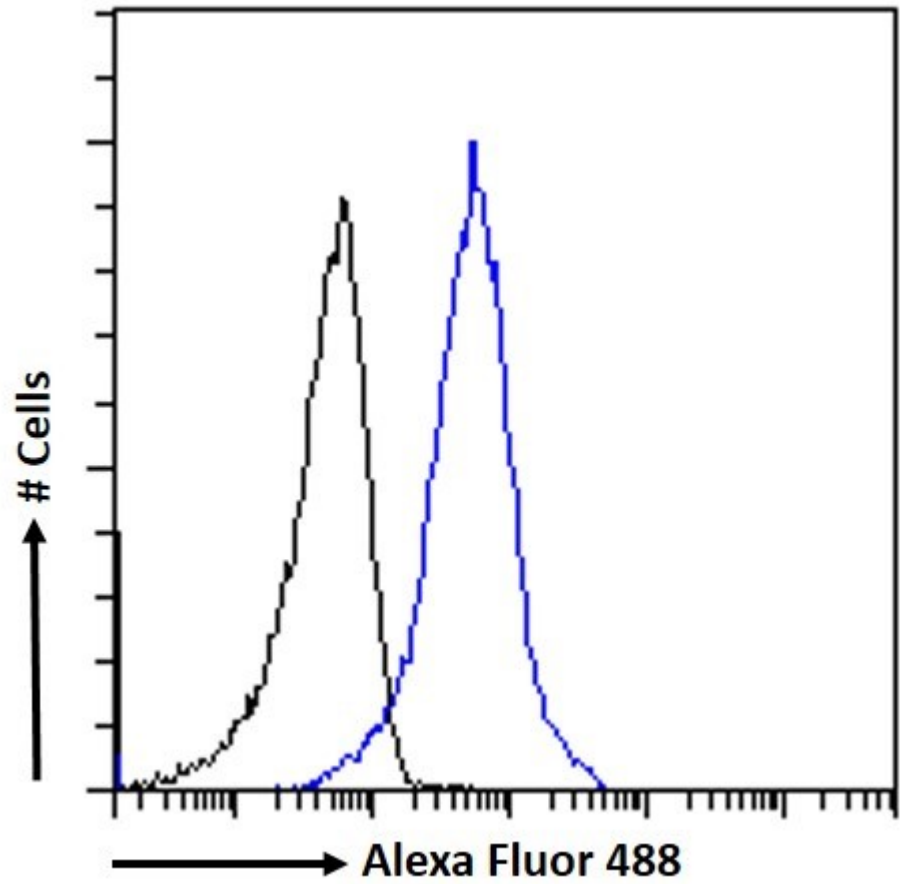
EB13087 (0.01 μ g/ml) staining of recombinant hACE2 (1 μ g protein in PBS, pH 7.4). Detected by chemiluminescence.



EB13087 (8 μ g/ml) staining of paraffin embedded Human Testis. Heat induced antigen retrieval with citrate buffer pH 6, HRP-staining.



EB13087 Negative Control showing staining of paraffin embedded Human Testis, with no primary antibody.



EB13087 Flow cytometric analysis of paraformaldehyde fixed HepG2 cells (blue line), permeabilized with 0.5% Triton. Primary incubation 1hr (10ug/ml) followed by Alexa Fluor 488 secondary antibody (1ug/ml). IgG control: Unimmunized goat IgG (black line) followed by Alexa Fluor 488 secondary antibody.