



# SZABO SCANDIC

Part of Europa Biosite

## Produktinformation



Forschungsprodukte & Biochemikalien



Zellkultur & Verbrauchsmaterial



Diagnostik & molekulare Diagnostik



Laborgeräte & Service

Weitere Information auf den folgenden Seiten!  
See the following pages for more information!



### Lieferung & Zahlungsart

siehe unsere [Liefer- und Versandbedingungen](#)

### Zuschläge

- Mindermengenzuschlag
- Trockeneiszuschlag
- Gefahrgutzuschlag
- Expressversand

### SZABO-SCANDIC HandelsgmbH

Quellenstraße 110, A-1100 Wien

T. +43(0)1 489 3961-0

F. +43(0)1 489 3961-7

[mail@szabo-scandic.com](mailto:mail@szabo-scandic.com)

[www.szabo-scandic.com](http://www.szabo-scandic.com)

[linkedin.com/company/szaboscandic](https://www.linkedin.com/company/szaboscandic) 



## UK Office

### Everest Biotech Ltd

Cherwell Innovation Centre  
77 Heyford Park  
Upper Heyford  
Oxfordshire  
OX25 5HD  
UK

Enquiries:

[info@everestbiotech.com](mailto:info@everestbiotech.com)

Sales:

[sales@everestbiotech.com](mailto:sales@everestbiotech.com)

Tech support:

[support@everestbiotech.com](mailto:support@everestbiotech.com)

Tel: +44 (0)1869 238326

Fax: +44 (0)1869 238327

## US Office

### Everest Biotech c/o Abcore

405 Maple Street, Suite A106  
Ramona,  
CA 92065  
USA

Inquiries:

[info@everestbiotech.com](mailto:info@everestbiotech.com)

Sales:

[usasales@everestbiotech.com](mailto:usasales@everestbiotech.com)

Tech support:

[support@everestbiotech.com](mailto:support@everestbiotech.com)

Tel: 888-320-4628 (toll-free)

Fax: 888-841-9041

[www.everestbiotech.com](http://www.everestbiotech.com)

**Research Use Only. Not for  
diagnostic or therapeutic use.**

## EB13088 - Goat Anti-SARS-COV2 Spike protein-S1 Domain (N Terminal) Antibody

Size: 100µg specific antibody in 200µl



### Target Protein

**Principal Names:** Severe acute respiratory syndrome coronavirus 2 (SARS-CoV-2) isolate Wuhan-Hu-1, Spike glycoprotein, E2, Peplomer protein

**Official Symbol:** SARS-CoV-2

**Accession Number(s):** P0DTC2; NC\_045512.2/MN908947

### Immunogen

Peptide with sequence PROPRIETARY.,-C, from the N Terminus of the protein sequence according to P0DTC2; NC\_045512.2/MN908947.

Please note the [peptide](#) is available for sale.

### Purification and Storage

Purified from goat serum by ammonium sulphate precipitation followed by antigen affinity chromatography using the immunizing peptide.

Supplied at 0.5 mg/ml in Tris saline, 0.02% sodium azide, pH7.3 with 0.5% bovine serum albumin.

Aliquot and store at -20°C. Minimize freezing and thawing.

### Applications Tested

**Peptide ELISA:** antibody detection limit dilution 1:64000.

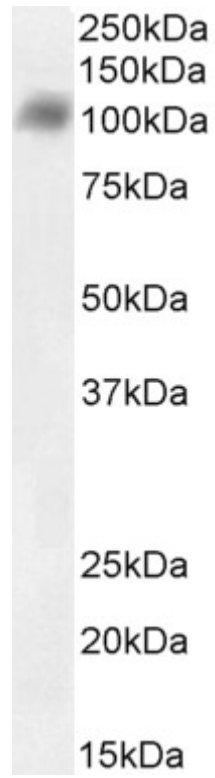
**Western blot:** Approx 100-110kDa band observed on recombinant SARS-COV2 Spike Protein S1. Recommended concentration 0.5-1ug/ml. Primary incubation 1 hour at room temperature.

**Immunofluorescence:** Transient expression of SARS-CoV-2 spike protein expressing plasmid, seen in the cytoplasm of HEK293 transfected cells.

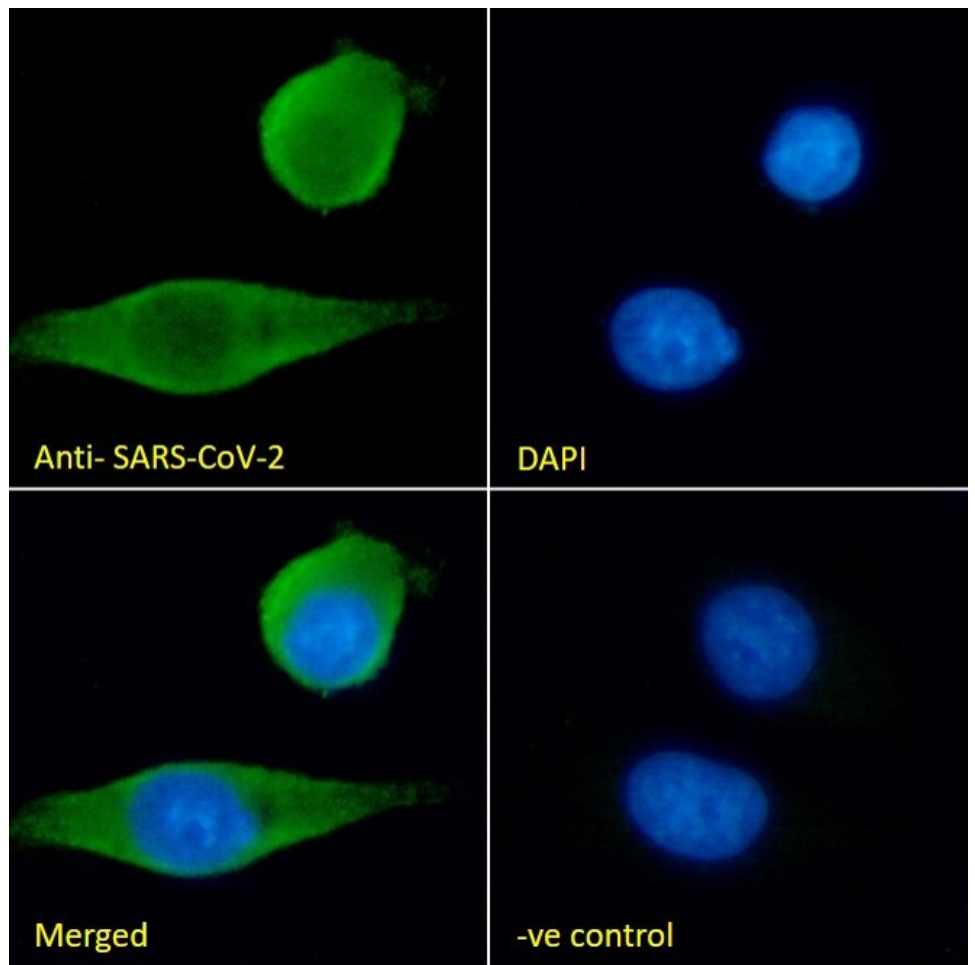
### Species Reactivity

**Tested:** Viral

**Expected from sequence similarity:** Human Coronavirus



EB13088 (1 $\mu$ g/ml) staining of recombinant Spike Protein S1 (1 $\mu$ g protein in PBS, pH 7.4). Detected by chemiluminescence.



EB13088 Immunofluorescence analysis of paraformaldehyde fixed HEK293 cells transiently transfected with SARS-CoV-2 spike protein expressing plasmid, permeabilized with 0.15% Triton. Primary incubation 1hr (10ug/ml) followed by Alexa Fluor 488 secondary antibody (2ug/ml), showing membrane and cytoplasmic staining. The nuclear stain is DAPI (blue). Negative control: non-transfected HEK293 cells.