



SZABO SCANDIC

Part of Europa Biosite

Produktinformation



Forschungsprodukte & Biochemikalien



Zellkultur & Verbrauchsmaterial



Diagnostik & molekulare Diagnostik



Laborgeräte & Service

Weitere Information auf den folgenden Seiten!
See the following pages for more information!



Lieferung & Zahlungsart

siehe unsere [Liefer- und Versandbedingungen](#)

Zuschläge

- Mindermengenzuschlag
- Trockeneiszuschlag
- Gefahrgutzuschlag
- Expressversand

SZABO-SCANDIC HandelsgmbH

Quellenstraße 110, A-1100 Wien

T. +43(0)1 489 3961-0

F. +43(0)1 489 3961-7

mail@szabo-scandic.com

www.szabo-scandic.com

[linkedin.com/company/szaboscandic](https://www.linkedin.com/company/szaboscandic) 



UK Office

Everest Biotech Ltd

Cherwell Innovation Centre
77 Heyford Park
Upper Heyford
Oxfordshire
OX25 5HD
UK

Enquiries:

info@everestbiotech.com

Sales:

sales@everestbiotech.com

Tech support:

support@everestbiotech.com

Tel: +44 (0)1869 238326

Fax: +44 (0)1869 238327

US Office

Everest Biotech c/o Abcore

405 Maple Street, Suite A106
Ramona,
CA 92065
USA

Inquiries:

info@everestbiotech.com

Sales:

usasales@everestbiotech.com

Tech support:

support@everestbiotech.com

Tel: 888-320-4628 (toll-free)

Fax: 888-841-9041

www.everestbiotech.com

**Research Use Only. Not for
diagnostic or therapeutic use.**

EB13093 - Goat Anti-KLF2 (aa248-260) Antibody

Size: 100µg specific antibody in 200µl



Target Protein

Principal Names: KLF2, Kruppel-like factor 2 (lung), LKLF, Kruppel-like factor LKLF, lung Kruppel-like zinc finger transcription factor

Official Symbol: KLF2

Accession Number(s): NP_057354.1

Human GeneID(s): [10365](#)

Immunogen

Peptide with sequence SPLELLEAKPKRGC, from the C Terminus of the protein sequence according to NP_057354.1.

Please note the [peptide](#) is available for sale.

Purification and Storage

Purified from goat serum by ammonium sulphate precipitation followed by antigen affinity chromatography using the immunizing peptide.

Supplied at 0.5 mg/ml in Tris saline, 0.02% sodium azide, pH7.3 with 0.5% bovine serum albumin.

Aliquot and store at -20°C. Minimize freezing and thawing.

Applications Tested

Peptide ELISA: antibody detection limit dilution 1:64000.

Western blot: Approx 40kDa band observed in lysates of cell line U251 and in Human Cerebral Cortex lysates and in preliminary testing of Human Lung, Heart and Colon lysate (calculated MW of 37.4kDa according to Human), Recommended concentration: 0.03-0.3µg/ml. Primary incubation 1 hour at room temperature.

IHC: Paraffin embedded Human Colon and Kidney. Recommended concentration: 4-6µg/ml.

Species Reactivity

Tested: Human

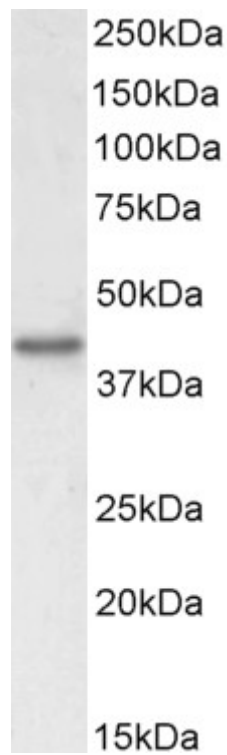
Expected from sequence similarity: Human

Specific Reference

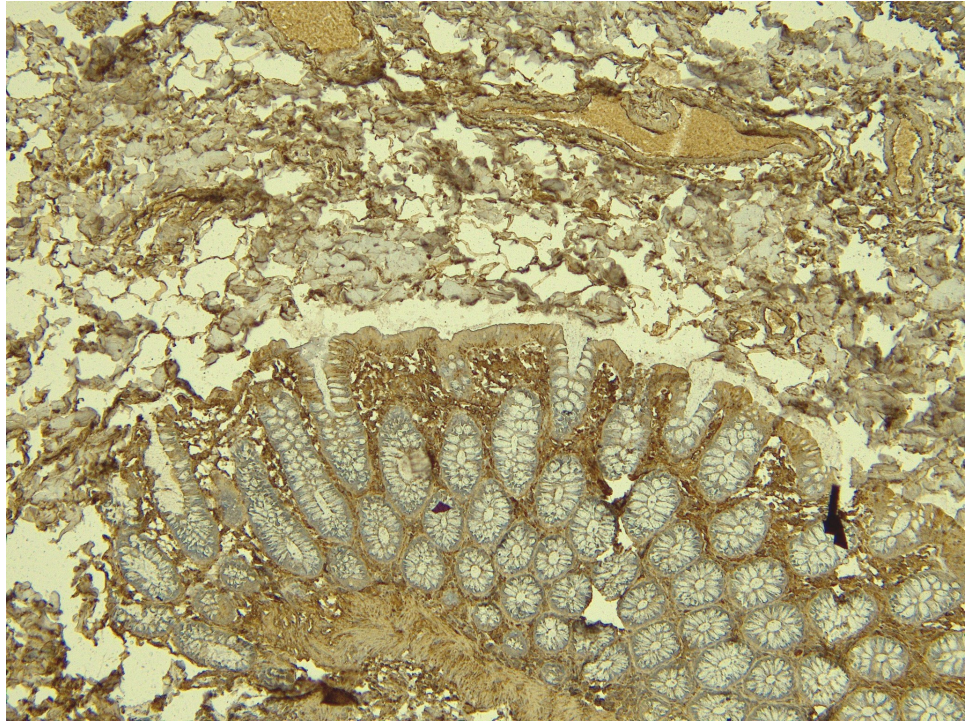
PMID: 0



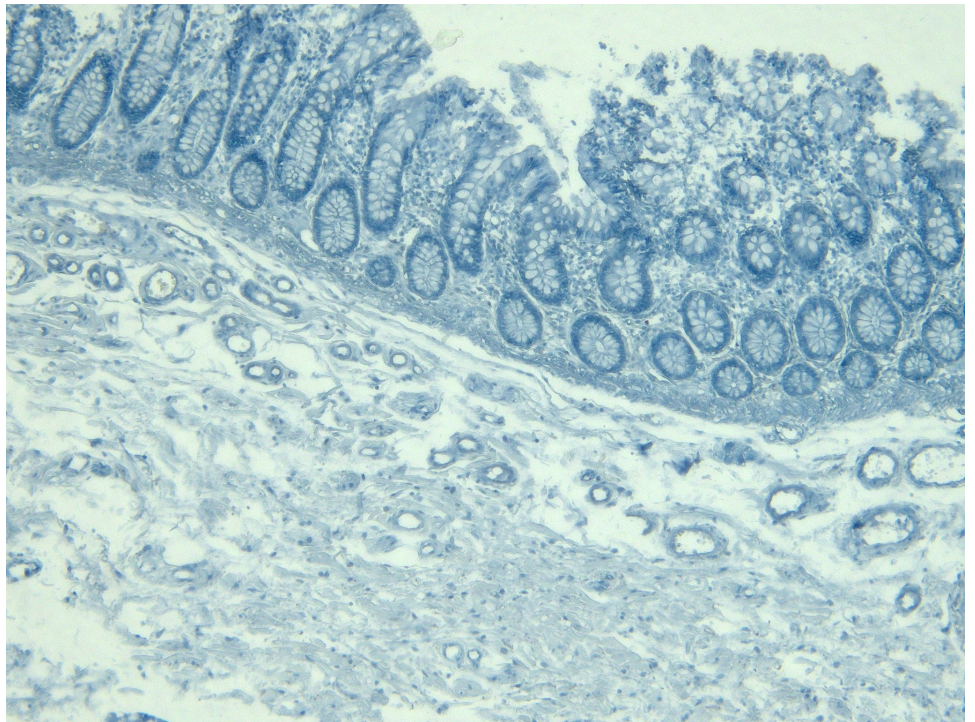
EB13093 (0.1µg/ml) staining of U251 cell lysate (35µg protein in RIPA buffer). Detected by chemiluminescence.



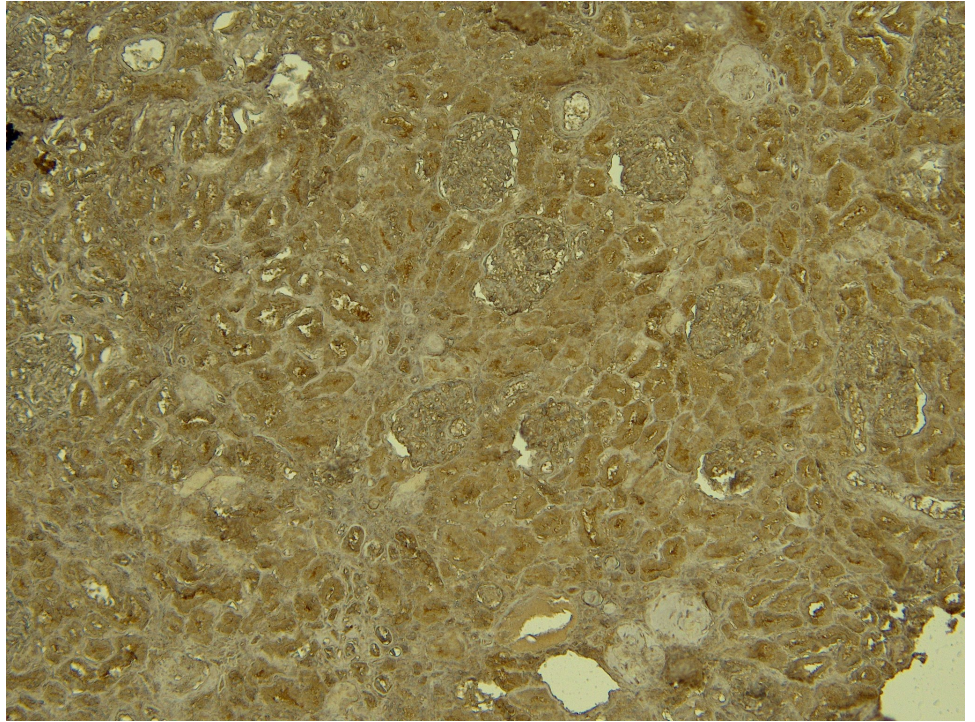
EB13093 (0.1µg/ml) staining of Human Cerebral Cortex lysate (35µg protein in RIPA buffer). Detected by chemiluminescence.



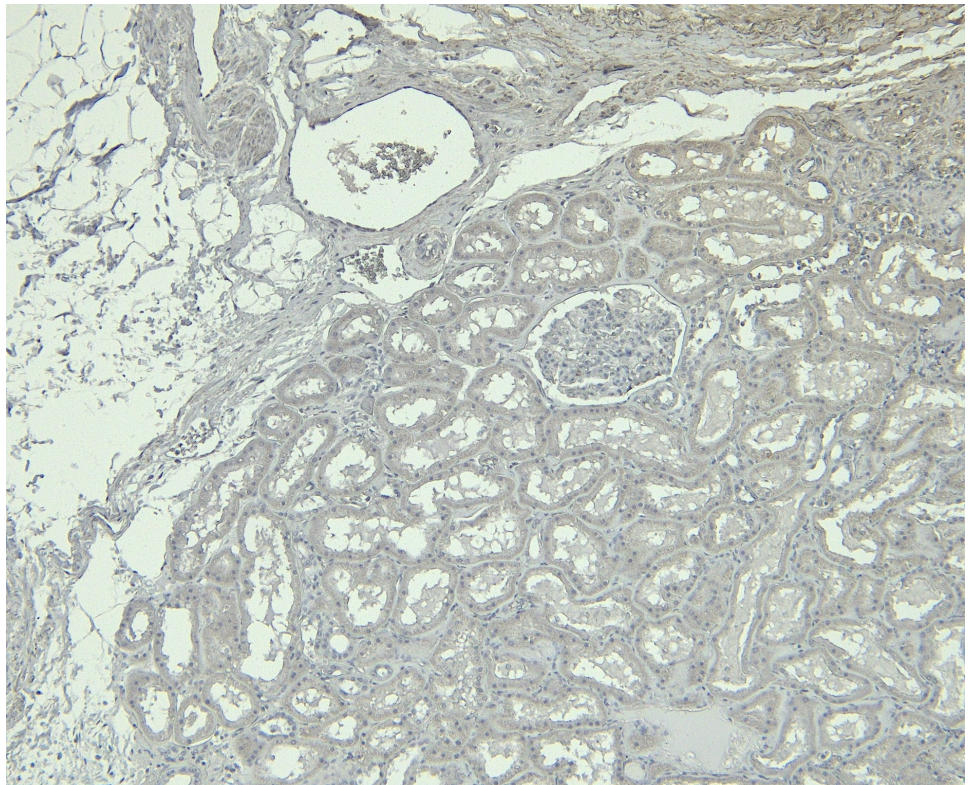
EB13093 (6 μ g/ml) staining of paraffin embedded Human Colon. Heat induced antigen retrieval with citrate buffer pH 6, HRP-staining.



EB13093 Negative Control showing staining of paraffin embedded Human Colon, with no primary antibody.



EB13093 (4 μ g/ml) staining of paraffin embedded Human Kidney. Heat induced antigen retrieval with citrate buffer pH 6, HRP-staining.



EB13093 Negative Control showing staining of paraffin embedded Human Kidney, with no primary antibody.