



SZABO SCANDIC

Part of Europa Biosite

Produktinformation



Forschungsprodukte & Biochemikalien



Zellkultur & Verbrauchsmaterial



Diagnostik & molekulare Diagnostik



Laborgeräte & Service

Weitere Information auf den folgenden Seiten!
See the following pages for more information!



Lieferung & Zahlungsart

siehe unsere [Liefer- und Versandbedingungen](#)

Zuschläge

- Mindermengenzuschlag
- Trockeneiszuschlag
- Gefahrgutzuschlag
- Expressversand

SZABO-SCANDIC HandelsgmbH

Quellenstraße 110, A-1100 Wien

T. +43(0)1 489 3961-0

F. +43(0)1 489 3961-7

mail@szabo-scandic.com

www.szabo-scandic.com

[linkedin.com/company/szaboscandic](https://www.linkedin.com/company/szaboscandic) 



UK Office

Everest Biotech Ltd

Cherwell Innovation Centre
77 Heyford Park
Upper Heyford
Oxfordshire
OX25 5HD
UK

Enquiries:

info@everestbiotech.com

Sales:

sales@everestbiotech.com

Tech support:

support@everestbiotech.com

Tel: +44 (0)1869 238326

Fax: +44 (0)1869 238327

US Office

Everest Biotech c/o Abcore

405 Maple Street, Suite A106
Ramona,
CA 92065
USA

Inquiries:

info@everestbiotech.com

Sales:

usasales@everestbiotech.com

Tech support:

support@everestbiotech.com

Tel: 888-320-4628 (toll-free)

Fax: 888-841-9041

www.everestbiotech.com

**Research Use Only. Not for
diagnostic or therapeutic use.**

EB13098 - Goat Anti-RSPO3 Antibody

Size: 100µg specific antibody in 200µl



Target Protein

Principal Names:

Official Symbol: RSPO3

Accession Number(s): NP_116173.2

Human GeneID(s): [84870](#)

Immunogen

Peptide with sequence SGYYGTRYPDINKC, from the N Terminus of the protein sequence according to NP_116173.2.

Please note the [peptide](#) is available for sale.

Purification and Storage

Purified from goat serum by ammonium sulphate precipitation followed by antigen affinity chromatography using the immunizing peptide.

Supplied at 0.5 mg/ml in Tris saline, 0.02% sodium azide, pH7.3 with 0.5% bovine serum albumin.

Aliquot and store at -20°C. Minimize freezing and thawing.

Applications Tested

Peptide ELISA: antibody detection limit dilution 1:128000.

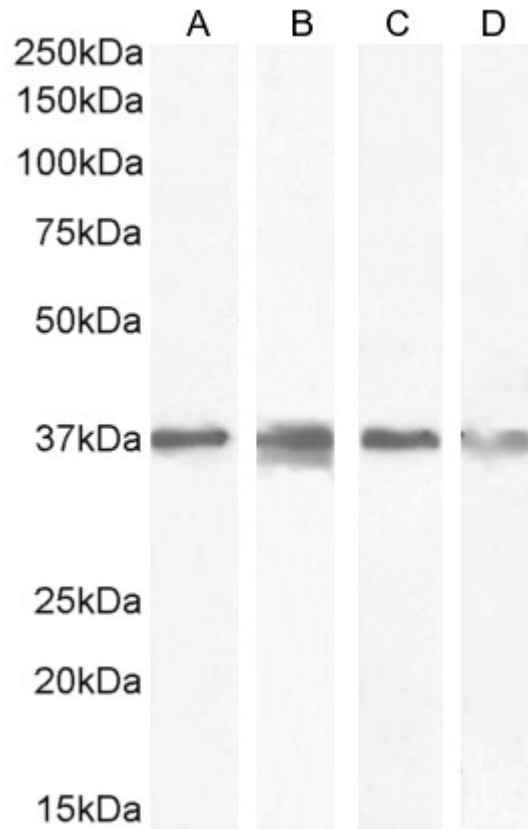
Western blot: Approx 37kDa band observed in lysates of cell lines HeLa, U2OS, A549 and KNRK, and in Mouse Brain lysates (calculated MW of 30.9kDa according to Human NP_116173.2, and 31.4kDa according to Mouse NP_082627.3, and Rat NP_001094460.1). This molecular weight is observed by other sources, and was successfully blocked by incubation with the immunising peptide. Recommended concentration: 0.1-0.3µg/ml. Primary incubation 1 hour at room temperature.

IHC: Paraffin embedded Human Colon. Recommended concentration: 4-6µg/ml. Positive staining was also seen in paraffin embedded Human Kidney at 4µg/ml.

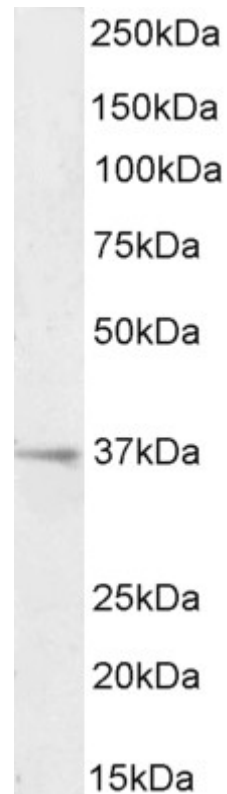
Species Reactivity

Tested: Human, Mouse, Rat

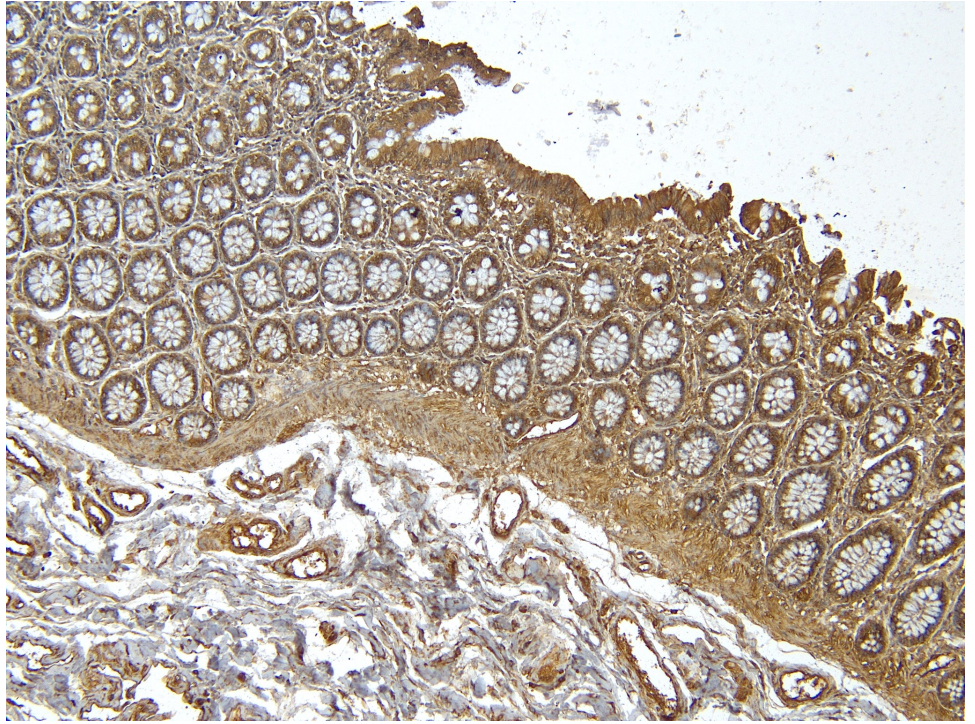
Expected from sequence similarity: Human, Mouse, Rat



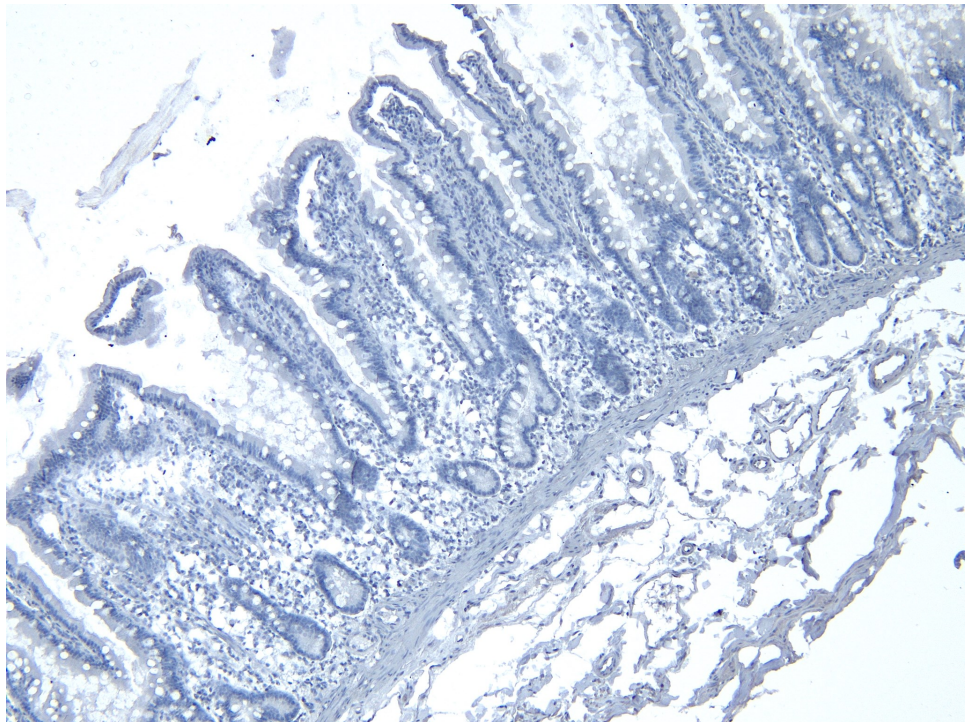
EB13098 (0.3 μ g/ml) staining of U2OS (A) and A549 (B) and (0.1 μ g/ml) HeLa (C) and KNRK (D) cell lysate (35 μ g protein in RIPA buffer). Detected by chemiluminescence.



EB13098 (0.1 μ g/ml) staining of Mouse Brain lysate (35 μ g protein in RIPA buffer). Detected by chemiluminescence.



EB13098 (4 μ g/ml) staining of paraffin embedded Human Colon. Heat induced antigen retrieval with citrate buffer pH 6, HRP-staining.



EB13098 Negative Control showing staining of paraffin embedded Human Colon, with no primary antibody.