



SZABO SCANDIC

Part of Europa Biosite

Produktinformation



Forschungsprodukte & Biochemikalien



Zellkultur & Verbrauchsmaterial



Diagnostik & molekulare Diagnostik



Laborgeräte & Service

Weitere Information auf den folgenden Seiten!
See the following pages for more information!



Lieferung & Zahlungsart

siehe unsere [Liefer- und Versandbedingungen](#)

Zuschläge

- Mindermengenzuschlag
- Trockeneiszuschlag
- Gefahrgutzuschlag
- Expressversand

SZABO-SCANDIC HandelsgmbH

Quellenstraße 110, A-1100 Wien

T. +43(0)1 489 3961-0

F. +43(0)1 489 3961-7

mail@szabo-scandic.com

www.szabo-scandic.com

[linkedin.com/company/szaboscandic](https://www.linkedin.com/company/szaboscandic) 



UK Office

Everest Biotech Ltd

Cherwell Innovation Centre
77 Heyford Park
Upper Heyford
Oxfordshire
OX25 5HD
UK

Enquiries:

info@everestbiotech.com

Sales:

sales@everestbiotech.com

Tech support:

support@everestbiotech.com

Tel: +44 (0)1869 238326

www.everestbiotech.com

**Research Use Only. Not for
diagnostic or therapeutic use.**

EBL002-CAPG-P1 - Positive Control Lysate for anti-CAPG antibody

Size: 50ul

Name

Positive Control Lysate for anti-CAPG antibody (EB12421 Batch Specific #P1)

Amount supplied

50ul (5ug/ul protein in RIPA buffer).

Test numbers

7

Storage and Handling

Store lysate at -20°C upon arrival. Avoid repeated freeze /thawed cycles.

Shelf life

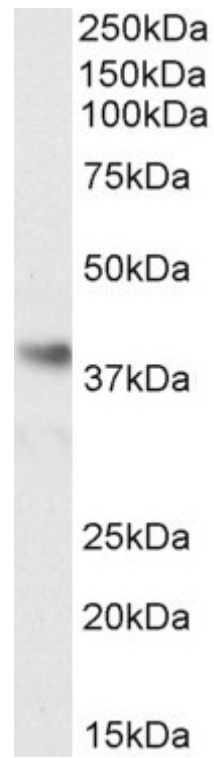
3 months.

Reconstitution

Bring vial to 4 °C and add 100ul RIPA buffer

Application tested

Western Blot: 0.3µg/ml staining of Primary antibody in lysate EBL002-CAPG-P1, calculated MW of 38.5kDa according to NP_001738.2 and 36.9kDa according to NP_001243069.1). Primary incubation 1 hour at room temperature. Secondary antibody is EB2ND-002-A at 1:40K



Western Blot: 0.3 μ g/ml staining of Primary antibody in lysate EBL002-CAPG-P1, calculated MW of 38.5kDa according to NP_001738.2 and 36.9kDa according to NP_001243069.1). Primary incubation 1 hour at room temperature. Secondary antibody is EB2ND-002-A at 1:40K