



# SZABO SCANDIC

Part of Europa Biosite

## Produktinformation



Forschungsprodukte & Biochemikalien



Zellkultur & Verbrauchsmaterial



Diagnostik & molekulare Diagnostik



Laborgeräte & Service

Weitere Information auf den folgenden Seiten!  
See the following pages for more information!



### Lieferung & Zahlungsart

siehe unsere [Liefer- und Versandbedingungen](#)

### Zuschläge

- Mindermengenzuschlag
- Trockeneiszuschlag
- Gefahrgutzuschlag
- Expressversand

### SZABO-SCANDIC HandelsgmbH

Quellenstraße 110, A-1100 Wien

T. +43(0)1 489 3961-0

F. +43(0)1 489 3961-7

[mail@szabo-scandic.com](mailto:mail@szabo-scandic.com)

[www.szabo-scandic.com](http://www.szabo-scandic.com)

[linkedin.com/company/szaboscandic](https://www.linkedin.com/company/szaboscandic) 



## UK Office

### Everest Biotech Ltd

Cherwell Innovation Centre  
77 Heyford Park  
Upper Heyford  
Oxfordshire  
OX25 5HD  
UK

Enquiries:

[info@everestbiotech.com](mailto:info@everestbiotech.com)

Sales:

[sales@everestbiotech.com](mailto:sales@everestbiotech.com)

Tech support:

[support@everestbiotech.com](mailto:support@everestbiotech.com)

Tel: +44 (0)1869 238326

[www.everestbiotech.com](http://www.everestbiotech.com)

**Research Use Only. Not for  
diagnostic or therapeutic use.**

## EBL021-IGF2BP1-P1 - Positive Control Lysate for anti-IMP1/IGF2BP1 antibody

Size: 50ul

### Name

Positive Control Lysate for anti-IMP1/IGF2BP1 antibody (EB10067 Batch Specific #P1)

### Amount supplied

50ul (5ug/ul protein in RIPA buffer).

### Test numbers

7

### Storage and Handling

Store lysate at -20°C upon arrival. Avoid repeated freeze /thawed cycles.

### Shelf life

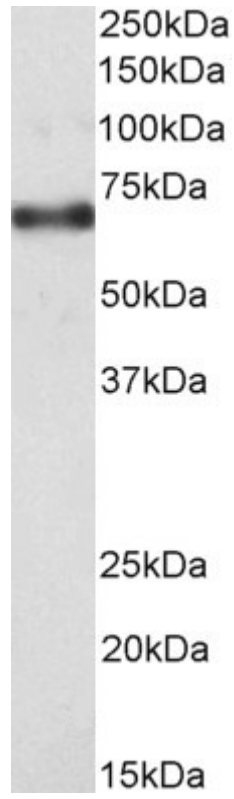
3 months.

### Reconstitution

Bring vial to 4 °C and add 100ul RIPA buffer

### Application tested

Western Blot: 0.3µg/ml staining of Primary antibody in lysates EBL021-IGF2BP1-P1, approx.70kDa band observed. (Calculated MW of 63.5kDa according to Human NP\_006537.3). Primary incubation 1 hour at room temperature. Secondary antibody is EB2ND-002-A at 1:40K.



Western Blot: 0.3 $\mu$ g/ml staining of Primary antibody in lysates EBL021-IGF2BP1-P1, approx.70kDa band observed. (Calculated MW of 63.5kDa according to Human NP\_006537.3). Primary incubation 1 hour at room temperature. Secondary antibody is EB2ND-002-A at 1:40K.