



# SZABO SCANDIC

Part of Europa Biosite

## Produktinformation



Forschungsprodukte & Biochemikalien



Zellkultur & Verbrauchsmaterial



Diagnostik & molekulare Diagnostik



Laborgeräte & Service

Weitere Information auf den folgenden Seiten!  
See the following pages for more information!



### Lieferung & Zahlungsart

siehe unsere [Liefer- und Versandbedingungen](#)

### Zuschläge

- Mindermengenzuschlag
- Trockeneiszuschlag
- Gefahrgutzuschlag
- Expressversand

### SZABO-SCANDIC HandelsgmbH

Quellenstraße 110, A-1100 Wien

T. +43(0)1 489 3961-0

F. +43(0)1 489 3961-7

[mail@szabo-scandic.com](mailto:mail@szabo-scandic.com)

[www.szabo-scandic.com](http://www.szabo-scandic.com)

[linkedin.com/company/szaboscandic](https://www.linkedin.com/company/szaboscandic) 



**CD2. Mouse Single-Color Reagent T6.3**

**COMMENTS**

Identification of human T cells and subset of NK cells associated with the receptor for sheep erythrocytes rosettes expressing the 45-50,000 M.W. surface antigen.

**CONCENTRATION**

See vial for concentration

**SHIP CONDITIONS**

Room Temperature

**STORAGE CUSTOMER**

Product should be stored at -20°C. Aliquot to avoid freeze/thaw cycles

**STABILITY**

Antibodies are stable for one year from purchase if stored frozen

**USE**

**PBMC:** Add 10 µl of MAB/10 PBMC in 100 µl PBS. Mix gently and incubate for 15 minutes at 2 to 8°C. Wash twice with PBS and analyze or fix with 0.5% v/v of paraformaldehyde in PBS and analyze. **WHOLE BLOOD:** Add 10 µl of MAB/100 µl of whole blood. Mix gently and incubate for 15 minutes at room temperature 20°C. Lyse the whole blood. Wash once with PBS and analyze or fix with 0.5% v/v of paraformaldehyde in PBS and analyze. . See instrument manufacturer's instructions for Lysed Whole Blood and Immunofluorescence analysis with a flow cytometer or microscope. **ALLOPHYCOCYANIN:** (APC) conjugates are analyzed in multi-color flow cytometry with instruments equipped with a second laser and proper filters. Laser excitation is at 633 nm with a Helium Neon (HeNe) laser or a 600-640 nm (633 nm) range for a Dye laser. Peak fluorescence emission is at 660 nm.

**ORDERING INFORMATION**

**CATALOG NUMBER**

0021

**SIZE**

100 µg

**FORM**

Unconjugated

**HOST/CLONE**

Mouse Clone T6.3

**FORMULATION**

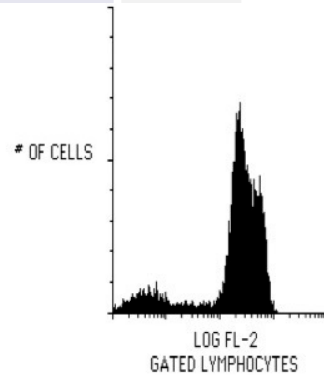
Provided as solution in phosphate buffered saline with 0.08% sodium azide

**ISOTYPE**

IgG2a

**APPLICATIONS**

Flow Cytometry



Peripheral blood lymphocytes stained with Exalpha's CD2 PE Conjugated Antibody (Cat. No. 0024).