



SZABO SCANDIC

Part of Europa Biosite

Produktinformation



Forschungsprodukte & Biochemikalien



Zellkultur & Verbrauchsmaterial



Diagnostik & molekulare Diagnostik



Laborgeräte & Service

Weitere Information auf den folgenden Seiten!
See the following pages for more information!



Lieferung & Zahlungsart

siehe unsere [Liefer- und Versandbedingungen](#)

Zuschläge

- Mindermengenzuschlag
- Trockeneiszuschlag
- Gefahrgutzuschlag
- Expressversand

SZABO-SCANDIC HandelsgmbH

Quellenstraße 110, A-1100 Wien

T. +43(0)1 489 3961-0

F. +43(0)1 489 3961-7

mail@szabo-scandic.com

www.szabo-scandic.com

[linkedin.com/company/szaboscandic](https://www.linkedin.com/company/szaboscandic) 



CD8 FITC. Mouse Single-Color Reagent 17D8

COMMENTS

Identification of human T cells suppressor/cytotoxic expressing the 32 kDa M.W. surface antigen.

CONCENTRATION

Titered for Flow Cytometry

SHIP CONDITIONS

Room Temperature

STORAGE CUSTOMER

Product should be stored at 4-8°C. DO NOT FREEZE

STABILITY

USE

PBMC: Add 10 µl of MAB/10⁶ PBMC in 100 µl PBS. Mix gently and incubate for 15 minutes at 2 to 8°C. Wash twice with PBS and analyze or fix with 0.5% v/v of paraformaldehyde in PBS and analyze. **WHOLE BLOOD:** Add 10 µl of MAB/100 µl of whole blood. Mix gently and incubate for 15 minutes at room temperature 20°C. Lyse the whole blood. Wash once with PBS and analyze or fix with 0.5% v/v of paraformaldehyde in PBS and analyze. See instrument manufacturer's instructions for Lysed Whole Blood and Immunofluorescence analysis with a flow cytometer or microscope. **ALLOPHYCOCYANIN:** (APC) conjugates are analyzed in multi-color flow cytometry with instruments equipped with a second laser and proper filters. Laser excitation is at 633 nm with a Helium Neon (HeNe) laser or a 600-640 nm (633 nm) range for a Dye laser. Peak fluorescence emission is at 660 nm. **RPE-Cy-5 +:** Excites at 488nm and emits at 670nm. Store protected from light.

ORDERING INFORMATION

CATALOG NUMBER

0082

SIZE

100 Tests

FORM

HOST/CLONE

Mouse Clone 17D8

FORMULATION

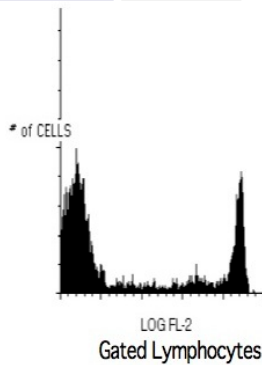
Provided as sterile filtered solution in phosphate buffered saline with 0.08% sodium azide and 0.2% carrier protein

ISOTYPE

IgG1

APPLICATIONS

Flow Cytometry



Peripheral blood lymphocytes stained with Exalpa's CD8 PE Conjugated Antibody (Cat. No. 0084).