



SZABO SCANDIC

Part of Europa Biosite

Produktinformation



Forschungsprodukte & Biochemikalien



Zellkultur & Verbrauchsmaterial



Diagnostik & molekulare Diagnostik



Laborgeräte & Service

Weitere Information auf den folgenden Seiten!
See the following pages for more information!



Lieferung & Zahlungsart

siehe unsere [Liefer- und Versandbedingungen](#)

Zuschläge

- Mindermengenzuschlag
- Trockeneiszuschlag
- Gefahrgutzuschlag
- Expressversand

SZABO-SCANDIC HandelsgmbH

Quellenstraße 110, A-1100 Wien

T. +43(0)1 489 3961-0

F. +43(0)1 489 3961-7

mail@szabo-scandic.com

www.szabo-scandic.com

[linkedin.com/company/szaboscandic](https://www.linkedin.com/company/szaboscandic) 



CD18 PE. Mouse Single-Color Reagent 3EB

COMMENTS

LFA-1 beta is a leukocyte adhesion receptor to (ICAM's) intercellular adhesion molecules. LFA-1 beta is on virtually all peripheral blood lymphocytes, 95,000 M.W. surface antigen.

CONCENTRATION

See vial for concentration

SHIP CONDITIONS

Room Temperature

STORAGE CUSTOMER

Product should be stored at 4-8°C. DO NOT FREEZE

STABILITY

Reagents are stable for the period shown on the vial label when stored properly

USE

PBMC: Add 10 µl of MAB/10⁶ PBMC in 100 µl PBS. Mix gently and incubate for 15 minutes at 2° to 8°C. Wash twice with PBS and analyze or fix with 0.5% v/v of paraformaldehyde in PBS and analyze. **WHOLE BLOOD:** Add 10 µl of MAB/100 µl of whole blood. Mix gently and incubate for 15 minutes at room temperature 20°C. Lyse the whole blood. Wash once with PBS and analyze or fix with 0.5% v/v of paraformaldehyde in PBS and analyze. See instrument manufacturers instructions for Lysed Whole Blood and Immunofluorescence analysis with a flow cytometer or microscope.

ORDERING INFORMATION

CATALOG NUMBER

0184

SIZE

100 Tests

FORM

RPE

HOST/CLONE

Mouse Clone 3EB

FORMULATION

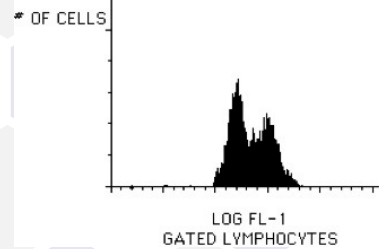
Provided as sterile filtered solution in phosphate buffered saline with 0.08% sodium azide and 0.2% carrier protein

ISOTYPE

IgG1

APPLICATIONS

Flow Cytometry



Peripheral blood lymphocytes stained with Exalphi's CD18 PE Conjugated Antibody (Cat. No. 0184).