



SZABO SCANDIC

Part of Europa Biosite

Produktinformation



Forschungsprodukte & Biochemikalien



Zellkultur & Verbrauchsmaterial



Diagnostik & molekulare Diagnostik



Laborgeräte & Service

Weitere Information auf den folgenden Seiten!
See the following pages for more information!



Lieferung & Zahlungsart

siehe unsere [Liefer- und Versandbedingungen](#)

Zuschläge

- Mindermengenzuschlag
- Trockeneiszuschlag
- Gefahrgutzuschlag
- Expressversand

SZABO-SCANDIC HandelsgmbH

Quellenstraße 110, A-1100 Wien

T. +43(0)1 489 3961-0

F. +43(0)1 489 3961-7

mail@szabo-scandic.com

www.szabo-scandic.com

[linkedin.com/company/szaboscandic](https://www.linkedin.com/company/szaboscandic) 



HLA-DR. Mouse Single-Color Reagent 423L

COMMENTS

HLA-DR is used for the identification of human B cell and T cell subsets associated with approximately 10% of peripheral blood lymphocytes 28-34,000 M.W. surface antigen, and is present in low density on monocytes and macrophages.

CONCENTRATION

See vial for concentration

SHIP CONDITIONS

room temperature

STORAGE CUSTOMER

Product should be stored at -20°C. Aliquot to avoid freeze/thaw cycles

STABILITY

Products are stable for one year from purchase when stored properly

USE

PBMC: Add 10 µl of MAB/10⁶ PBMC in 100 µl PBS. Mix gently and incubate for 15 minutes at 2° to 8°C. Wash twice with PBS and analyze or fix with 0.5% v/v of paraformaldehyde in PBS and analyze.

WHOLE BLOOD: Add 10 µl of MAB/100 µl of whole blood. Mix gently and incubate for 15 minutes at room temperature 20°C. Lyse the whole blood. Wash once with PBS and analyze or fix with 0.5% v/v of paraformaldehyde in PBS and analyze. See instrument manufacturer's instructions for Lysed Whole Blood and Immunofluorescence analysis with a flow cytometer or microscope.

ORDERING INFORMATION

CATALOG NUMBER

0DR1

SIZE

100 µg

FORM

Unconjugated

HOST/CLONE

Mouse Clone 423L

FORMULATION

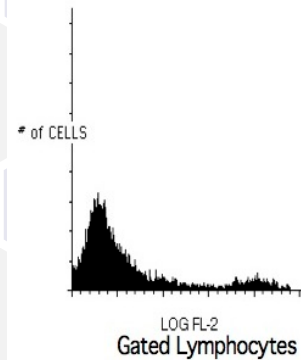
Provided as solution in phosphate buffered saline with 0.08% sodium azide

ISOTYPE

IgG2a

APPLICATIONS

Flow Cytometry



Peripheral blood lymphocytes stained with Exalpha's HLA-DR PE Conjugated Antibody (Cat. No. 0DR4).