



SZABO SCANDIC

Part of Europa Biosite

Produktinformation



Forschungsprodukte & Biochemikalien



Zellkultur & Verbrauchsmaterial



Diagnostik & molekulare Diagnostik



Laborgeräte & Service

Weitere Information auf den folgenden Seiten!
See the following pages for more information!



Lieferung & Zahlungsart

siehe unsere [Liefer- und Versandbedingungen](#)

Zuschläge

- Mindermengenzuschlag
- Trockeneiszuschlag
- Gefahrgutzuschlag
- Expressversand

SZABO-SCANDIC HandelsgmbH

Quellenstraße 110, A-1100 Wien

T. +43(0)1 489 3961-0

F. +43(0)1 489 3961-7

mail@szabo-scandic.com

www.szabo-scandic.com

[linkedin.com/company/szaboscandic](https://www.linkedin.com/company/szaboscandic) 



IgG1. Mouse Second Step Reagents ZX3

COMMENTS

This monoclonal antibody to IgG1 is a negative control for Immunofluorescence staining with Pure, FITC, Biotin, PE and APC mouse monoclonal antibodies of the IgG1 subclass. It is used to monitor the level of non-specific binding of mouse monoclonal antibodies to human cell surface antigens.

CONCENTRATION

See vial for concentration

SHIP CONDITIONS

Room Temperature

STORAGE CUSTOMER

Product should be stored at 4-8°C. DO NOT FREEZE

STABILITY

Reagents are stable for the period shown on the vial label when stored properly

USE

Consult the appropriate fact sheet to determine the amount of antibodies to be used as a control for PBMC or Whole Blood. PBMC: Add 10 μ l of MAB/10⁶ PBMC in 100 μ l PBS. Mix gently and incubate for 15 minutes at 2° to 8°C. Wash twice with PBS and analyze. WHOLE BLOOD: Add 10 μ l of MAB/100 μ l of Whole Blood. Mix gently and incubate for 15 minutes at room temperature 20°C. Lyse the whole blood. Wash once with PBS and analyze. See instrument manufacturer's instructions for Lysed Whole Blood and Immunofluorescence analysis with a flow cytometer or microscope. ALLOPHYCOCYANIN: (APC) conjugates are analyzed in multi-color flow cytometry with instruments equipped with a second laser and proper filters. Laser excitation is at α 633 nm with a Helium Neon (HeNe) laser or a 600-640 nm (633nm) range for a Dye laser. Peak fluorescence emission is at 660 nm. RPE-Cy-5 +: Excites at 488nm and emits at 670nm. Store protected from light. Optimal concentration should be evaluated by serial dilutions.

ORDERING INFORMATION

CATALOG NUMBER

0G11

SIZE

100 μ g

FORM

HOST/CLONE

Mouse Clone ZX3

FORMULATION

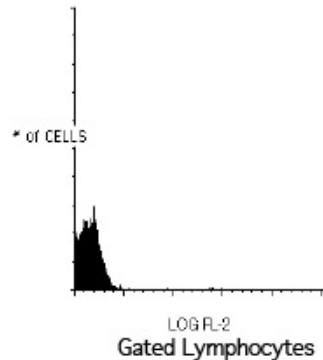
Provided as sterile filtered solution in phosphate buffered saline with 0.08% sodium azide and 0.2% carrier protein

ISOTYPE

IgG1

APPLICATIONS

Flow Cytometry



Peripheral blood lymphocytes stained with Exalpa's PE labeled IgG-1 Negative Control (Cat. No. 0G14).