



# SZABO SCANDIC

Part of Europa Biosite

## Produktinformation



Forschungsprodukte & Biochemikalien



Zellkultur & Verbrauchsmaterial



Diagnostik & molekulare Diagnostik



Laborgeräte & Service

Weitere Information auf den folgenden Seiten!  
See the following pages for more information!



### Lieferung & Zahlungsart

siehe unsere [Liefer- und Versandbedingungen](#)

### Zuschläge

- Mindermengenzuschlag
- Trockeneiszuschlag
- Gefahrgutzuschlag
- Expressversand

### SZABO-SCANDIC HandelsgmbH

Quellenstraße 110, A-1100 Wien

T. +43(0)1 489 3961-0

F. +43(0)1 489 3961-7

[mail@szabo-scandic.com](mailto:mail@szabo-scandic.com)

[www.szabo-scandic.com](http://www.szabo-scandic.com)

[linkedin.com/company/szaboscandic](https://www.linkedin.com/company/szaboscandic) 



**CD11a Biotin. Mouse Single-Color Reagent OFYS**

**COMMENTS**

CD11a, Leukocyte Function Antigen-1 (LFA-1) complex is a heterodimeric glycoprotein consisting of two non-covalently linked chains, a 180 kDa alpha chain and a 95 kDa beta chain. It is a member of the integrin supergene family of adhesion molecules, and is on virtually all peripheral blood leukocytes. The molecule binds to ICAM-1, 2 and 3 and mediates cell-cell adhesion. This antibody blocks cell-cell adhesion and adhesion mediated events such as cell mediated cytotoxicity.

**CONCENTRATION**

See vial for concentration

**SHIP CONDITIONS**

Room Temperature

**STORAGE CUSTOMER**

Product should be stored at 4-8°C. DO NOT FREEZE

**STABILITY**

Reagents are stable for the period shown on the vial label when stored properly

**Use**

**PBMC:** Add 10 µl of MAB/10<sup>6</sup> PBMC in 100 µl PBS. Mix gently and incubate for 15 minutes at 2 to 8°C. Wash twice with PBS and analyze or fix with 0.5% v/v of paraformaldehyde in PBS and analyze. **WHOLE BLOOD:** Add 10 µl of MAB/100 µl of whole blood. Mix gently and incubate for 15 minutes at room temperature (20°C). Lyse the whole blood. Wash once with PBS and analyze or fix with 0.5% v/v of paraformaldehyde in PBS and analyze. See instrument manufacturer's instructions for Lysed Whole Blood and Immunofluorescence analysis with a flow cytometer or microscope.

**ORDERING INFORMATION**

**CATALOG NUMBER**

11A3

**SIZE**

100 Tests

**FORM**

Biotin

**HOST/CLONE**

Mouse Clone OFYS

**FORMULATION**

Provided as sterile filtered solution in phosphate buffered saline with 0.08% sodium azide and 0.2% carrier protein

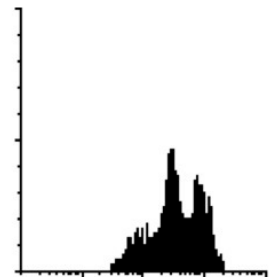
**ISOTYPE**

IgG2a

**APPLICATIONS**

Flow Cytometry

# Cells



FL-1 Gated Lymphocytes

Peripheral blood lymphocytes stained with Exalpa's CD11a PE Conjugated Antibody (Cat. No. 11A4).