



# SZABO SCANDIC

Part of Europa Biosite

## Produktinformation



Forschungsprodukte & Biochemikalien



Zellkultur & Verbrauchsmaterial



Diagnostik & molekulare Diagnostik



Laborgeräte & Service

Weitere Information auf den folgenden Seiten!  
See the following pages for more information!



### Lieferung & Zahlungsart

siehe unsere [Liefer- und Versandbedingungen](#)

### Zuschläge

- Mindermengenzuschlag
- Trockeneiszuschlag
- Gefahrgutzuschlag
- Expressversand

### SZABO-SCANDIC HandelsgmbH

Quellenstraße 110, A-1100 Wien

T. +43(0)1 489 3961-0

F. +43(0)1 489 3961-7

[mail@szabo-scandic.com](mailto:mail@szabo-scandic.com)

[www.szabo-scandic.com](http://www.szabo-scandic.com)

[linkedin.com/company/szaboscandic](https://www.linkedin.com/company/szaboscandic) 



**CD11b. Mouse Single-Color Reagent F6.2**

**COMMENTS**

(Mac-1), CD11b/CD18 complex is a leukocyte adhesion receptor to intercellular adhesion molecules (ICAM's). CR3 alpha chain (M.W. 165,000) is on virtually all peripheral blood neutrophils, eosinophils, monocytes and approximately 30% of peripheral blood lymphocytes.

**CONCENTRATION**

See vial for concentration

**SHIP CONDITIONS**

Room Temperature

**STORAGE CUSTOMER**

Product should be stored at -20°C. Aliquot to avoid freeze/thaw cycles

**STABILITY**

Products are stable for one year from purchase when stored properly

**USE**

**PBMC:** Add 10 µl of MAB/10<sup>6</sup> PBMC in 100 µl PBS. Mix gently and incubate for 15 minutes at 2 to 8° C. Wash twice with PBS and analyze or fix with 0.5% v/v of paraformaldehyde in PBS and analyze. **WHOLE BLOOD:** Add 10 µl of MAB/100 µl of whole blood. Mix gently and incubate for 15 minutes at room temperature (20°C). Lyse the whole blood. Wash once with PBS and analyze or fix with 0.5% v/v of paraformaldehyde in PBS and analyze. See instrument manufacturer's instructions for Lysed Whole Blood and Immunofluorescence analysis with a flow cytometer or microscope.

**ORDERING INFORMATION**

**CATALOG NUMBER**

11B1

**SIZE**

100 µg

**FORM**

Unconjugated

**HOST/CLONE**

Mouse Clone F6.2

**FORMULATION**

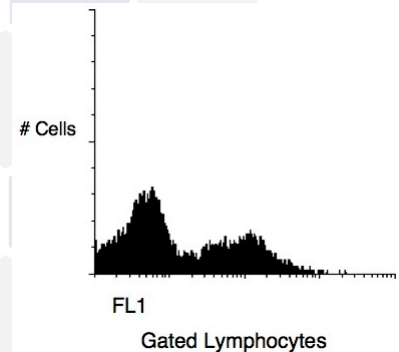
Provided as solution in phosphate buffered saline with 0.08% sodium azide

**ISOTYPE**

IgG2a

**APPLICATIONS**

Flow Cytometry



Peripheral blood lymphocytes stained with Exalphi's CD11b PE Conjugated Antibody (Cat. No. 11B4).