



SZABO SCANDIC

Part of Europa Biosite

Produktinformation



Forschungsprodukte & Biochemikalien



Zellkultur & Verbrauchsmaterial



Diagnostik & molekulare Diagnostik



Laborgeräte & Service

Weitere Information auf den folgenden Seiten!
See the following pages for more information!



Lieferung & Zahlungsart

siehe unsere [Liefer- und Versandbedingungen](#)

Zuschläge

- Mindermengenzuschlag
- Trockeneiszuschlag
- Gefahrgutzuschlag
- Expressversand

SZABO-SCANDIC HandelsgmbH

Quellenstraße 110, A-1100 Wien

T. +43(0)1 489 3961-0

F. +43(0)1 489 3961-7

mail@szabo-scandic.com

www.szabo-scandic.com

[linkedin.com/company/szaboscandic](https://www.linkedin.com/company/szaboscandic) 



E1A (adenovirus early region 1). Sheep Polyclonal Antibody
E1A Early Adenovirus region 1

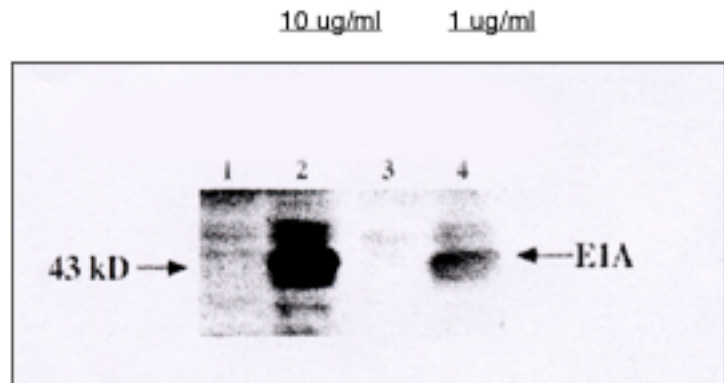
BACKGROUND

The immunogen for the anti-E1A was a recombinant E1A protein recognizing a 43kD protein. E1A gene encodes potent onco-proteins that modify the normal transcriptional growth regulation of key cellular genes and thus alter cell cycle control. E1A protein has both transforming and trans-activating activities. Plays a role in viral genome replication by driving entry of quiescent cells into the cell cycle. Disrupts the function of host retinoblastoma protein RB1/pRb and isoform early E1A 26 kDa protein stabilizes TP53, which are key regulators of the cell cycle. Induces the disassembly of the E2F1 transcription factors from RB1 by direct competition for the same binding site on RB1, with subsequent transcriptional activation of E2F1-regulated S-phase genes. Inactivation of the ability of RB1 to arrest the cell cycle is critical for cellular transformation, uncontrolled cellular growth and proliferation induced by viral infection. Stimulation of progression from G1 to S phase allows the virus to efficiently use the cellular DNA replicating machinery to achieve viral genome replication. Interaction with RBX1 and CUL1 inhibits ubiquitination of the proteins targeted by SCF(FBW7) ubiquitin ligase complex, and may be linked to unregulated host cell proliferation. The tumorigenesis-restraining activity of E1A may be related to the disruption of the host CtBP-CtIP complex through the CtBP binding motif

IMMUNOGEN

Recombinant E1A protein recognizing a 43kD protein

Legend: E1A western blot. Each lane contains 50 ug total cellular protein separated on a 12% SDS PAGE gel. Lanes 1 and 3, HCT116 cell lysate – negative control: lanes 2 and 4, 293 cell lysate, positive control.



ORDERING INFORMATION

CATALOG NUMBER

A100P

SIZE

100 µg

FORM

Unconjugated

HOST/CLONE

Sheep

FORMULATION

Provided as solution in phosphate buffered saline with 0.08% sodium azide

CONCENTRATION

See vial for concentration

ISOTYPE

IgG

APPLICATIONS

Immunoprecipitation

SPECIES REACTIVITY

Human, Rat

ACCESSION NUMBER

Human P03254

POSITIVE CONTROL/TISSUE EXPRESSION

293 cells are human embryonic kidney cells that have been transformed with the adenovirus genes E1A and E1B, which are required for adenovirus propagation. This cell line can be used as a positive control for this antibody. This antibody is suitable for use with his tagged or gst tagged recombinant proteins.

COMMENTS

Western Blot suggested dilution 1- 10 ug /ml

PURIFICATION

Ammonium Sulfate Precipitation

SHIP CONDITIONS

room temperature

STORAGE CUSTOMER

Product should be stored at -20°C. Aliquot to avoid freeze/thaw cycles

STABILITY

Products are stable for one year from purchase when stored properly

REFERENCES

1. Chatton, B., et al. 'Transcriptional activation by the adenovirus larger E1a product is mediated by members of the cellular transcription factor ATF family which can directly associate with E1a.' Mol. Cell. Biol., 13, 561-570 (1993)

PRODUCT SPECIFIC REFERENCES