



SZABO SCANDIC

Part of Europa Biosite

Produktinformation



Forschungsprodukte & Biochemikalien



Zellkultur & Verbrauchsmaterial



Diagnostik & molekulare Diagnostik



Laborgeräte & Service

Weitere Information auf den folgenden Seiten!
See the following pages for more information!



Lieferung & Zahlungsart

siehe unsere [Liefer- und Versandbedingungen](#)

Zuschläge

- Mindermengenzuschlag
- Trockeneiszuschlag
- Gefahrgutzuschlag
- Expressversand

SZABO-SCANDIC HandelsgmbH

Quellenstraße 110, A-1100 Wien

T. +43(0)1 489 3961-0

F. +43(0)1 489 3961-7

mail@szabo-scandic.com

www.szabo-scandic.com

[linkedin.com/company/szaboscandic](https://www.linkedin.com/company/szaboscandic) 

Cytochrome c. Sheep Polyclonal Antibody
sheep anti cytochrome c, cyto c, cytochrome-c

BACKGROUND

Electron carrier protein. The oxidized form of the cytochrome c heme group can accept an electron from the heme group of the cytochrome c1 subunit of cytochrome reductase. Cytochrome c then transfers this electron to the cytochrome oxidase complex, the final protein carrier in the mitochondrial electron-transport chain.

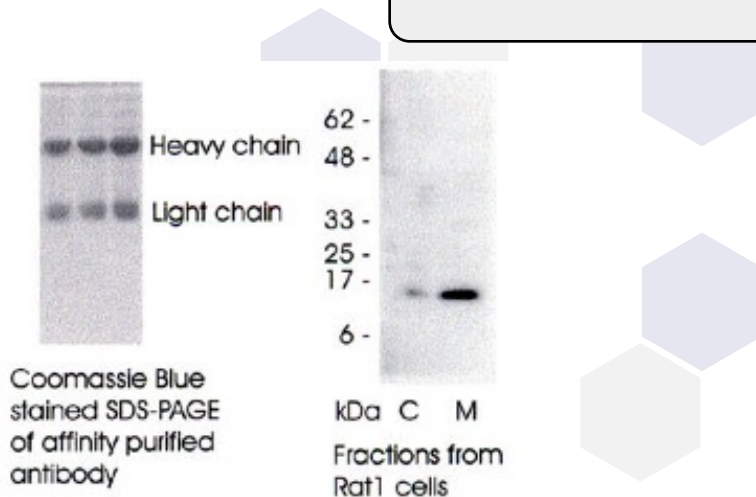
Plays a role in apoptosis. Suppression of the anti-apoptotic members or activation of the pro-apoptotic members of the Bcl-2 family leads to altered mitochondrial membrane permeability resulting in release of cytochrome c into the cytosol. Binding of cytochrome c to Apaf-1 triggers the activation of caspase-9, which then accelerates apoptosis by activating other caspases.

Defects in CYCS are the cause of thrombocytopenia type 4 (THC4) also known as autosomal dominant thrombocytopenia type 4. Thrombocytopenia is the presence of relatively few platelets in blood. THC4 is a non-syndromic form of thrombocytopenia. Clinical manifestations of thrombocytopenia are absent or mild. THC4 may be caused by dysregulated platelet formation.

IMMUNOGEN

Full length recombinant Cytochrome C

(Left) SDS-PAGE of purified antibody.
Western blot analysis of the cytoplasmic (C) and mitochondrial (M) fractions of Rat-1 cell line using cytochrome C antibody (Cat. No. A200P) at 1:5000 dilution.



ORDERING INFORMATION

CATALOG NUMBER

A200P

SIZE

100 µg

FORM

Unconjugated

HOST/CLONE

Sheep

FORMULATION

Provided as solution in phosphate buffered saline with 0.08% sodium azide

CONCENTRATION

See vial for concentration

ISOTYPE

IgG

APPLICATIONS

Western Blot, Immunoprecipitation, Immunohistochemistry

SPECIES REACTIVITY

Human, Rat, Rabbit, Dog

ACCESSION NUMBER

Human P99999

Rat P62898

Rabbit P00008

Canine P00011

POSITIVE CONTROL/TISSUE EXPRESSION

Rat1 cell line; Mitochondrion matrix

COMMENTS

Applications: Western Blot 1:5,000, shows a MW of 14.4kDa. May be used in immunofluorescence applications with human and rat cells; Immunoprecipitation - Empirical.

PURIFICATION

Ammonium Sulfate Precipitation

SHIP CONDITIONS

Ship at ambient temperature, freeze upon arrival

STORAGE CUSTOMER

Product should be stored at -20°C. Aliquot to avoid freeze/thaw cycles

STABILITY

Products are stable for one year from purchase when stored properly

REFERENCES

1. Morison, I.M., et al. "A mutation of human cytochrome c enhances the intrinsic apoptotic pathway but causes only thrombocytopenia." Nat. Genet. 2008, 40, 387-389
2. Skulachev, V.P. "Cytochrome c is the apoptotic and antioxidant cascades." FEBS Lett 1998, 423, 275-280