



SZABO SCANDIC

Part of Europa Biosite

Produktinformation



Forschungsprodukte & Biochemikalien



Zellkultur & Verbrauchsmaterial



Diagnostik & molekulare Diagnostik



Laborgeräte & Service

Weitere Information auf den folgenden Seiten!
See the following pages for more information!



Lieferung & Zahlungsart

siehe unsere [Liefer- und Versandbedingungen](#)

Zuschläge

- Mindermengenzuschlag
- Trockeneiszuschlag
- Gefahrgutzuschlag
- Expressversand

SZABO-SCANDIC HandelsgmbH

Quellenstraße 110, A-1100 Wien

T. +43(0)1 489 3961-0

F. +43(0)1 489 3961-7

mail@szabo-scandic.com

www.szabo-scandic.com

[linkedin.com/company/szaboscandic](https://www.linkedin.com/company/szaboscandic) 

chk 1 kinase. Sheep Polyclonal Antibody
sheep anti human chk 1 kinase, checkpoint kinase 1

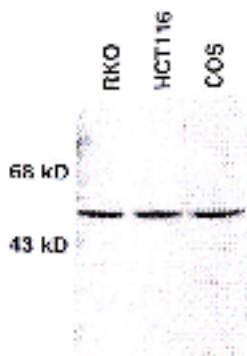
BACKGROUND

The immunogen for anti-human chk-1 was a protein corresponding to amino acid sequence 1-474 and having a molecular weight of 54 kD. One mechanism by which checkpoints maintain the fidelity of cell cycle events is through blocking mitosis in response to unreplicated or damaged DNA. In most species this occurs through inhibiting activation of the cyclic-dependent kinase cdc2, which regulates entry in to mitosis. Chk1, a kinase involved in the DNA damage checkpoint response can phosphorylate Cdc25C an activator of cdc2. It is hypothesized that chk 1 induces serine 216 phosphorylation of Cdc 25C and subsequent binding negatively regulated Cdc25C, thus preventing it from activating cdc2.

IMMUNOGEN

A protein corresponding to amino acid sequence 1-474 and having a molecular weight of 54 kD

Western analysis of Chk1 protein in the indicated cell lines. Sheep polyclonal antibody was used at 1:500 dilution.



ORDERING INFORMATION

CATALOG NUMBER
K100P

SIZE
250 µg

FORM
Unconjugated

HOST/CLONE
Sheep

FORMULATION
Provided as solution in phosphate buffered saline with 0.08% sodium azide

CONCENTRATION
See vial for concentration

ISOTYPE
IgG

APPLICATIONS
Western Blot, Immunoprecipitation

SPECIES REACTIVITY
Human, Mouse, Rat, Monkey

ACCESSION NUMBER
Human O14757

POSITIVE CONTROL/TISSUE EXPRESSION

Recombinant proteins conjugated to OVA, GST, His tags and other. Native chk 1 kinase.

COMMENTS

Applications: Western Blot at 1 – 10 ug/ml.

PURIFICATION

Ammonium Sulfate Precipitation

SHIP CONDITIONS

Room Temperature

STORAGE CUSTOMER

Product should be stored at -20°C. Aliquot to avoid freeze/thaw cycles

STABILITY

Products are stable for one year from purchase when stored properly

REFERENCES

1. Wang, Y., et al. 'CHK1 kinase activity assay.' *Methods Mol Biol* 2004, 281, 143-151.
2. Yarden, R.I., et al. 'BRCA1 regulates the G2/M checkpoint by activating Chk1 kinase upon DNA damage.' *Nat Genet* 2002, 30, 285-289
3. Nakajo, N., et al. 'Involvement of Chk1 kinase in prophase I arrest of *Xenopus* oocytes.' *Dev Biol* 1999, 207, 432-444

PRODUCT SPECIFIC REFERENCES