



SZABO SCANDIC

Part of Europa Biosite

Produktinformation



Forschungsprodukte & Biochemikalien



Zellkultur & Verbrauchsmaterial



Diagnostik & molekulare Diagnostik



Laborgeräte & Service

Weitere Information auf den folgenden Seiten!
See the following pages for more information!



Lieferung & Zahlungsart

siehe unsere [Liefer- und Versandbedingungen](#)

Zuschläge

- Mindermengenzuschlag
- Trockeneiszuschlag
- Gefahrgutzuschlag
- Expressversand

SZABO-SCANDIC HandelsgmbH

Quellenstraße 110, A-1100 Wien

T. +43(0)1 489 3961-0

F. +43(0)1 489 3961-7

mail@szabo-scandic.com

www.szabo-scandic.com

[linkedin.com/company/szaboscandic](https://www.linkedin.com/company/szaboscandic) 

Guanylate Kinase GKWW domain (MAGI). Sheep Polyclonal Antibody

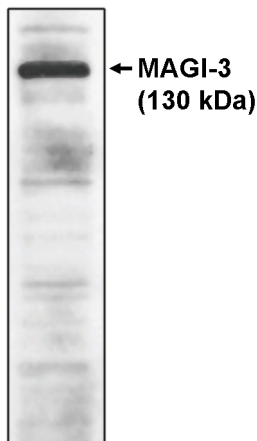
BACKGROUND

Membrane-associated guanylate kinase with inverted orientation (MAGI3) is a novel, 130 kDa guanylate kinase which is part of a family of multi-PDZ domain containing guanylate kinases. These guanylate kinases are localized to epithelial cell tight junctions. MAGI3 and PTEN/MMAC cooperate to modulate the kinase activity of AKT/protein kinase B (PKB). MAGI3 positions the PTEN/MMAC phosphatase to specific subcellular locations that are involved with the regulation of cell proliferation and survival. MAGI3, as well as other proteins in this family, are made up of an N-terminal guanylate kinase domain, followed by a WW domain, named for two conserved tryptophan residues and first identified as two repeats in mouse YAP65, which is then followed by 6 PDZ domains.

IMMUNOGEN

Recombinant protein corresponding to the guanylate kinase-WW domain of MAGI-3.

Western blot analysis using MAGI-3, GKWW antibody on cell lysates transfected with full-length human MAGI-3 protein.



ORDERING INFORMATION

CATALOG NUMBER

K115P

SIZE

250 µg

FORM

Unconjugated

HOST/CLONE

Sheep

FORMULATION

Provided as solution in phosphate buffered saline with 0.08% sodium azide

CONCENTRATION

See vial for concentration

ISOTYPE

IgG

APPLICATIONS

Western Blot

SPECIES REACTIVITY

Human

ACCESSION NUMBER

Q9H2V6, Human

POSITIVE CONTROL/TISSUE EXPRESSION

COMMENTS

Antibody detects MAGI-3 by Western blot at 1-10 $\mu\text{g/ml}$. Detects a 130 kDa band in cells transfected with full-length MAGI-3 protein. Optimal concentration should be evaluated by serial dilutions.

PURIFICATION

Ammonium Sulfate Precipitation

SHIP CONDITIONS

Ship at ambient temperature, freeze upon arrival

STORAGE CUSTOMER

Product should be stored at -20°C . Aliquot to avoid freeze/thaw cycles

STABILITY

Products are stable for one year from purchase when stored properly

REFERENCES

1. Wu, Y., et al. Interaction of the tumor suppressor PTEN/MMAC with a PDZ domain of MAGI3, a novel membrane-associated guanylate kinase. *J. Biol. Chem.* 2000, 275, 21477-21485