



SZABO SCANDIC

Part of Europa Biosite

Produktinformation



Forschungsprodukte & Biochemikalien



Zellkultur & Verbrauchsmaterial



Diagnostik & molekulare Diagnostik



Laborgeräte & Service

Weitere Information auf den folgenden Seiten!
See the following pages for more information!



Lieferung & Zahlungsart

siehe unsere [Liefer- und Versandbedingungen](#)

Zuschläge

- Mindermengenzuschlag
- Trockeneiszuschlag
- Gefahrgutzuschlag
- Expressversand

SZABO-SCANDIC HandelsgmbH

Quellenstraße 110, A-1100 Wien

T. +43(0)1 489 3961-0

F. +43(0)1 489 3961-7

mail@szabo-scandic.com

www.szabo-scandic.com

[linkedin.com/company/szaboscandic](https://www.linkedin.com/company/szaboscandic) 



Interferon (includes alpha 1 and 2a). Rabbit Polyclonal Antibody

BACKGROUND

Exalpha's antibody to pan IFN type I recognizes a number of human and murine alpha interferon species including human IFN α 1, IFN α 2a and consensus IFN1, murine IFN α 4 and IFN ω .

ORDERING INFORMATION

CATALOG NUMBER
L105P

SIZE

100 μ g

FORM

Unconjugated

HOST/CLONE

Rabbit

FORMULATION

Provided as solution in phosphate buffered saline with 0.08% sodium azide

CONCENTRATION

See vial for concentration

ISOTYPE

IgG

APPLICATIONS

Western Blot

SPECIES REACTIVITY

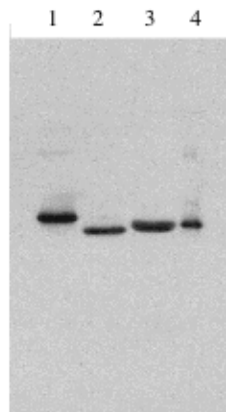
Human, Mouse

ACCESSION NUMBER

,

IMMUNOGEN

Legend: Exalpha's rabbit anti Type I IFN antibody at 1 ug/ml western blot of 1] Consensus IFN alpha, 2] IFN alpha 2a, 3] IFN beta 1 b, 4] IFN alpha 1.



POSITIVE CONTROL/TISSUE EXPRESSION

COMMENTS

Applications: 5- 10 ug/ml for western blot analysis. There is evidence that this antibody may be used to abrogate dendritic cell differentiation and proliferation.

PURIFICATION

Ammonium Sulfate Precipitation

SHIP CONDITIONS

Room Temperature

STORAGE CUSTOMER

Product should be stored at -20°C. Aliquot to avoid freeze/thaw cycles

STABILITY

Products are stable for one year from purchase when stored properly

REFERENCES