



SZABO SCANDIC

Part of Europa Biosite

Produktinformation



Forschungsprodukte & Biochemikalien



Zellkultur & Verbrauchsmaterial



Diagnostik & molekulare Diagnostik



Laborgeräte & Service

Weitere Information auf den folgenden Seiten!
See the following pages for more information!



Lieferung & Zahlungsart

siehe unsere [Liefer- und Versandbedingungen](#)

Zuschläge

- Mindermengenzuschlag
- Trockeneiszuschlag
- Gefahrgutzuschlag
- Expressversand

SZABO-SCANDIC HandelsgmbH

Quellenstraße 110, A-1100 Wien

T. +43(0)1 489 3961-0

F. +43(0)1 489 3961-7

mail@szabo-scandic.com

www.szabo-scandic.com

[linkedin.com/company/szaboscandic](https://www.linkedin.com/company/szaboscandic) 

p107. Mouse Monoclonal Antibody

p107; Retinoblastoma-like protein 1; PRB1; 107 kda retinoblastoma-associated protein

BACKGROUND

The immunogen used was a recombinant protein to the N terminus of p107. p107 is related both in structure and function to the retinoblastoma tumor suppressor protein and p130 (collectively known as pocket proteins) and are known to regulate the activity of E2F transcription factors. E2F transcription factors regulate the expression of a number of genes important in cell proliferation, particularly those involved in the progression through G1 and into the S-phase of the cell cycle. Binding of p107 converts E2F transcription factors from transcriptional activators to transcriptional repressors. KAB6 recognizes both the phosphorylated and unphosphorylated forms of p107 at a MW of 107kDa.

IMMUNOGEN

Recombinant GST protein to the N terminus of p107

ORDERING INFORMATION

CATALOG NUMBER

N100M

SIZE

100 μ g

FORM

Unconjugated

HOST/CLONE

Mouse Clone KAB6

FORMULATION

Provided as solution in phosphate buffered saline with 0.08% sodium azide

CONCENTRATION

See vial for concentration

ISOTYPE

IgG1

APPLICATIONS

Western Blot

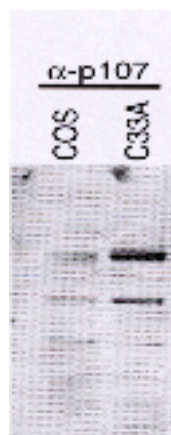
SPECIES REACTIVITY

Human, Mouse, Rat

ACCESSION NUMBER

Human P28749

Mouse Q64701



POSITIVE CONTROL/TISSUE EXPRESSION

COMMENTS

Applications: Western Blots at 1:1000

PURIFICATION

Protein A/G Chromatography

SHIP CONDITIONS

Room Temperature

STORAGE CUSTOMER

Product should be stored at -20°C. Aliquot to avoid freeze/thaw cycles

STABILITY

Antibodies are stable for one year from purchase if stored frozen

REFERENCES

PRODUCT SPECIFIC REFERENCES