



SZABO SCANDIC

Part of Europa Biosite

Produktinformation



Forschungsprodukte & Biochemikalien



Zellkultur & Verbrauchsmaterial



Diagnostik & molekulare Diagnostik



Laborgeräte & Service

Weitere Information auf den folgenden Seiten!
See the following pages for more information!



Lieferung & Zahlungsart

siehe unsere [Liefer- und Versandbedingungen](#)

Zuschläge

- Mindermengenzuschlag
- Trockeneiszuschlag
- Gefahrgutzuschlag
- Expressversand

SZABO-SCANDIC HandelsgmbH

Quellenstraße 110, A-1100 Wien

T. +43(0)1 489 3961-0

F. +43(0)1 489 3961-7

mail@szabo-scandic.com

www.szabo-scandic.com

[linkedin.com/company/szaboscandic](https://www.linkedin.com/company/szaboscandic) 



PTP PEST. Mouse Monoclonal Antibody

BACKGROUND

PTP PEST is an 88 kDa cytosolic protein tyrosine phosphatase which is ubiquitously expressed in mammalian tissues. PTP PEST exhibits a high specific activity when assayed in vitro with artificial tyrosine-phosphorylated substrates. PTP PEST is subject to regulation via phosphorylation of ser 39 and is catalyzed by both protein kinase C and protein kinase A.

ORDERING INFORMATION

CATALOG NUMBER
P105M

SIZE
100 µg
FORM
Unconjugated

HOST/CLONE
Mouse Clone AG25

FORMULATION
Provided as solution in phosphate buffered saline with 0.08% sodium azide

CONCENTRATION
See vial for concentration

ISOTYPE
IgG1

APPLICATIONS
Western Blot, Immunoprecipitation

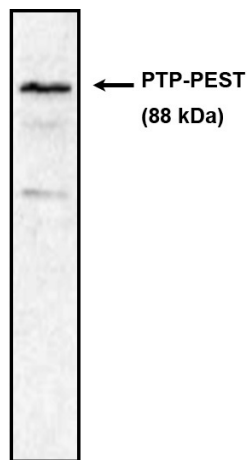
SPECIES REACTIVITY
Human, Mouse

ACCESSION NUMBER
Q05209, Human

IMMUNOGEN

baculovirus expressed, human full length PTP-PEST

Western blot using PTP-PEST antibody (Cat. No. P105M) on rat brain lysate.



POSITIVE CONTROL/TISSUE EXPRESSION

Postiive Control: SK-N-SH Cell Lysate

COMMENTS

Applications: Western Blot, Immunoprecipitation

PURIFICATION

Protein A/G Chromatography

SHIP CONDITIONS

Ship at ambient temperature, freeze upon arrival

STORAGE CUSTOMER

Product should be stored at -20°C. Aliquot to avoid freeze/thaw cycles

STABILITY

Antibodies are stable for one year from purchase if stored frozen

REFERENCES