



SZABO SCANDIC

Part of Europa Biosite

Produktinformation



Forschungsprodukte & Biochemikalien



Zellkultur & Verbrauchsmaterial



Diagnostik & molekulare Diagnostik



Laborgeräte & Service

Weitere Information auf den folgenden Seiten!
See the following pages for more information!



Lieferung & Zahlungsart

siehe unsere [Liefer- und Versandbedingungen](#)

Zuschläge

- Mindermengenzuschlag
- Trockeneiszuschlag
- Gefahrgutzuschlag
- Expressversand

SZABO-SCANDIC HandelsgmbH

Quellenstraße 110, A-1100 Wien

T. +43(0)1 489 3961-0

F. +43(0)1 489 3961-7

mail@szabo-scandic.com

www.szabo-scandic.com

[linkedin.com/company/szaboscandic](https://www.linkedin.com/company/szaboscandic) 

Protein Phosphatase 1 gamma 2. Sheep Polyclonal Antibody

BACKGROUND

The immunogen used to the purified peptide conjugated to KLH corresponding to the sequence NH₂-Gln-Lys-Ala-Ser-Asn-Tyr-Arg-Asn-Asn-Thr-Val-Lys-Tyr-Glu-COOH.

ORDERING INFORMATION

CATALOG NUMBER
P130P

SIZE
100 µg

FORM
Unconjugated

HOST/CLONE
Sheep

FORMULATION
Provided as solution in phosphate buffered saline with 0.08% sodium azide

CONCENTRATION
See vial for concentration

ISOTYPE
IgG

APPLICATIONS
Western Blot

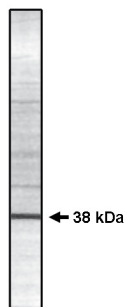
SPECIES REACTIVITY
Human, Mouse, Rat, Bovine

ACCESSION NUMBER
P36873, Human

IMMUNOGEN

QKASNYRNNTVKYE

Western blot using PP 1 gamma 2 antibody
(Cat. No. P130P) on rat testes lysate.



POSITIVE CONTROL/TISSUE EXPRESSION

COMMENTS

Application: Immunoblotting 5-10 ug/ml. Immunoprecipitation

PURIFICATION

Ammonium Sulfate Precipitation

SHIP CONDITIONS

Room Temperature

STORAGE CUSTOMER

Product should be stored at -20°C. Aliquot to avoid freeze/thaw cycles

STABILITY

Antibodies are stable for one year from purchase if stored frozen

REFERENCES