



SZABO SCANDIC

Part of Europa Biosite

Produktinformation



Forschungsprodukte & Biochemikalien



Zellkultur & Verbrauchsmaterial



Diagnostik & molekulare Diagnostik



Laborgeräte & Service

Weitere Information auf den folgenden Seiten!
See the following pages for more information!



Lieferung & Zahlungsart

siehe unsere [Liefer- und Versandbedingungen](#)

Zuschläge

- Mindermengenzuschlag
- Trockeneiszuschlag
- Gefahrgutzuschlag
- Expressversand

SZABO-SCANDIC HandelsgmbH

Quellenstraße 110, A-1100 Wien

T. +43(0)1 489 3961-0

F. +43(0)1 489 3961-7

mail@szabo-scandic.com

www.szabo-scandic.com

[linkedin.com/company/szaboscandic](https://www.linkedin.com/company/szaboscandic) 

Protein Phosphatase 2 A/A. Rabbit Polyclonal Antibody

BACKGROUND

The immunogen used to generate the purified antibody was a peptide conjugated to KLH corresponding to the sequence NH₂-Asp-Asp-Ser-Leu-Try-Pro-Ile-Ala-Val-Leu-Ile-Asp-Glu-COOH. This peptide antibody corresponds to N -terminal peptide of PP2A/A regulatory subunit having a MW of 65kDa. The sequence used is amino acid 7 - 19.

ORDERING INFORMATION

CATALOG NUMBER

P135P

SIZE

100 µg

FORM

Affinity Purified

HOST/CLONE

Rabbit

FORMULATION

Provided as solution in phosphate buffered saline with 0.08% sodium azide

CONCENTRATION

See vial for concentration

ISOTYPE

IgG

APPLICATIONS

Western Blot, Immunohistochemistry

SPECIES REACTIVITY

Human, Mouse, Rat, Bovine

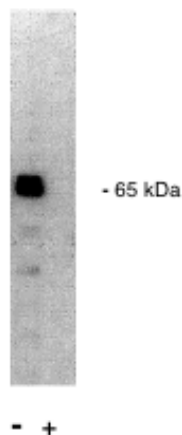
ACCESSION NUMBER

P30153 , Human

IMMUNOGEN

A peptide conjugated to KLH

Legend: Exalpha's rabbit anti PP 2A/A antibody western blot of total rat brain homogenate. (+) indicates blocking by specific peptide.



POSITIVE CONTROL/TISSUE EXPRESSION

COMMENTS

Applications: Immunoblotting 5-10 ug/ml. Immunoprecipitation often used in combination with affinity purified anti-pp2A/C (Cat# P185P) to immunoprecipitate pp2A. Immunocytochemistry 10-15 ug/ml.

PURIFICATION

Ammonium Sulfate Precipitation

SHIP CONDITIONS

Ship at ambient temperature, freeze upon arrival

STORAGE CUSTOMER

Product should be stored at -20°C. Aliquot to avoid freeze/thaw cycles

STABILITY

Products are stable for one year from purchase when stored properly

REFERENCES