



SZABO SCANDIC

Part of Europa Biosite

Produktinformation



Forschungsprodukte & Biochemikalien



Zellkultur & Verbrauchsmaterial



Diagnostik & molekulare Diagnostik



Laborgeräte & Service

Weitere Information auf den folgenden Seiten!
See the following pages for more information!



Lieferung & Zahlungsart

siehe unsere [Liefer- und Versandbedingungen](#)

Zuschläge

- Mindermengenzuschlag
- Trockeneiszuschlag
- Gefahrgutzuschlag
- Expressversand

SZABO-SCANDIC HandelsgmbH

Quellenstraße 110, A-1100 Wien

T. +43(0)1 489 3961-0

F. +43(0)1 489 3961-7

mail@szabo-scandic.com

www.szabo-scandic.com

[linkedin.com/company/szaboscandic](https://www.linkedin.com/company/szaboscandic) 

Protein Phosphatase 2 A/B beta. Rabbit Polyclonal Antibody

BACKGROUND

The immunogen used to generate the purified antibody was a peptide conjugated to KLH corresponding to the sequence NH₂-Cys-Gly-Glu-Glu-Asp-Ile-Asp-Thr-Arg-Lys-Ile-Asn-Asn-Ser-Phe-COOH. This peptide antibody corresponds to N terminal peptide of PP2A/B β regulatory subunit having a MW of 53kDa. The sequence used is amino acid 2-14.

ORDERING INFORMATION

CATALOG NUMBER
P155P

SIZE
100 μ g
FORM
Affinity Purified

HOST/CLONE
Rabbit

FORMULATION
Provided as solution in phosphate buffered saline with 0.08% sodium azide

CONCENTRATION
See vial for concentration

ISOTYPE
IgG

APPLICATIONS
Western Blot

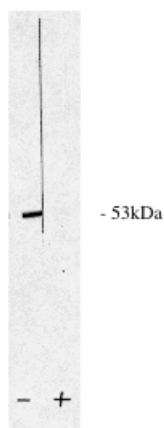
SPECIES REACTIVITY
Human, Mouse, Rat

ACCESSION NUMBER
Q15172, Human

IMMUNOGEN

A peptide conjugated to KLH

Legend: Exalpha's rabbit anti PP2 A/B western blot of total rat brain extract. (+) or (-) indicates present of blocking peptide or control peptide.



POSITIVE CONTROL/TISSUE EXPRESSION

COMMENTS

Applications: Immunoblotting 1:500 to 1:1,000.

PURIFICATION

Ammonium Sulfate Precipitation

SHIP CONDITIONS

Room Temperature

STORAGE CUSTOMER

Product should be stored at -20°C. Aliquot to avoid freeze/thaw cycles

STABILITY

Antibodies are stable for one year from purchase if stored frozen

REFERENCES