



SZABO SCANDIC

Part of Europa Biosite

Produktinformation



Forschungsprodukte & Biochemikalien



Zellkultur & Verbrauchsmaterial



Diagnostik & molekulare Diagnostik



Laborgeräte & Service

Weitere Information auf den folgenden Seiten!
See the following pages for more information!



Lieferung & Zahlungsart

siehe unsere [Liefer- und Versandbedingungen](#)

Zuschläge

- Mindermengenzuschlag
- Trockeneiszuschlag
- Gefahrgutzuschlag
- Expressversand

SZABO-SCANDIC HandelsgmbH

Quellenstraße 110, A-1100 Wien

T. +43(0)1 489 3961-0

F. +43(0)1 489 3961-7

mail@szabo-scandic.com

www.szabo-scandic.com

[linkedin.com/company/szaboscandic](https://www.linkedin.com/company/szaboscandic) 

Protein Phosphatase 2 A/B (B' pan 2). Rabbit Polyclonal Antibody

BACKGROUND

The immunogen used to generate the purified antibody was a peptide conjugated to KLH corresponding to the sequence NH₂-Val-Ser-Ser-Pro-His-Phe-Gln-Val-Ala-GluArg-Ala-Leu-Tyr-COOH. This antibody is specific to pp2A/B isoforms.

ORDERING INFORMATION

CATALOG NUMBER

P165P

SIZE

100 µg

FORM

Unconjugated

HOST/CLONE

Rabbit

FORMULATION

Provided as solution in phosphate buffered saline with 0.08% sodium azide

CONCENTRATION

See vial for concentration

ISOTYPE

IgG

APPLICATIONS

Western Blot

SPECIES REACTIVITY

Human, Mouse, Rat, Bovine

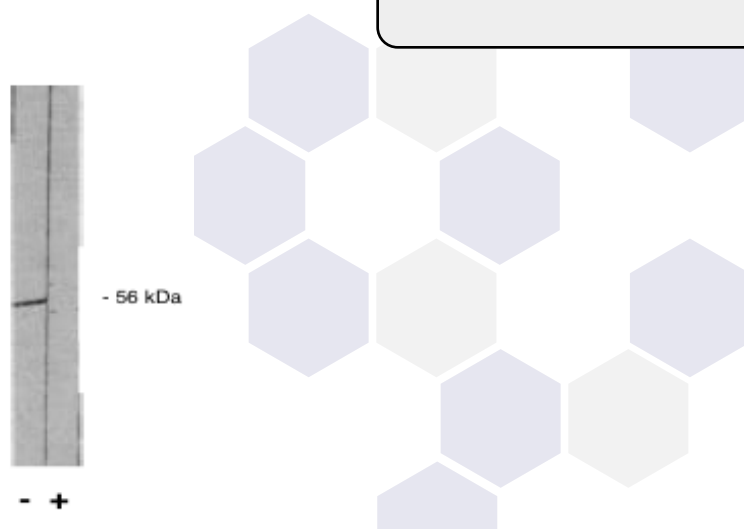
ACCESSION NUMBER

,

IMMUNOGEN

A peptide conjugated to KLH

Legend: Exalpha PP 2 A/B' pan 2 antibody western blot of total rat brain extract. (+) indicates blocking specific peptide or (-) or control peptide added.



POSITIVE CONTROL/TISSUE EXPRESSION

COMMENTS

Application: Immunoblotting 1:500 to 1:1,000.

PURIFICATION

Ammonium Sulfate Precipitation

SHIP CONDITIONS

Room Temperature

STORAGE CUSTOMER

Product should be stored at -20°C. Aliquot to avoid freeze/thaw cycles

STABILITY

Antibodies are stable for one year from purchase if stored frozen

REFERENCES