



SZABO SCANDIC

Part of Europa Biosite

Produktinformation



Forschungsprodukte & Biochemikalien



Zellkultur & Verbrauchsmaterial



Diagnostik & molekulare Diagnostik



Laborgeräte & Service

Weitere Information auf den folgenden Seiten!
See the following pages for more information!



Lieferung & Zahlungsart

siehe unsere [Liefer- und Versandbedingungen](#)

Zuschläge

- Mindermengenzuschlag
- Trockeneiszuschlag
- Gefahrgutzuschlag
- Expressversand

SZABO-SCANDIC HandelsgmbH

Quellenstraße 110, A-1100 Wien

T. +43(0)1 489 3961-0

F. +43(0)1 489 3961-7

mail@szabo-scandic.com

www.szabo-scandic.com

[linkedin.com/company/szaboscandic](https://www.linkedin.com/company/szaboscandic) 



Protein Phosphatase 2 A/B gamma. Rabbit Polyclonal Antibody

BACKGROUND

Protein phosphatase 2A (PP2A) is a heterotrimeric enzyme consisting of a catalytic subunits (C), a structural subunit (A) and a variable regulatory subunit (B). The B subunit family is made up of the α , β and γ isoforms. The PP2A/B γ isoform appears to only be detectable in the brain where it has been speculated that it cytoskeletal substrates. The RNA which produces the PP2A/B γ is developmentally regulated and increases sharply after birth. It has also been suggested that it may be important in the establishment and maintenance of neuronal connections.

ORDERING INFORMATION

CATALOG NUMBER
P180P

SIZE
100 μ g
FORM
Unconjugated

HOST/CLONE
Rabbit

FORMULATION
Provided as solution in phosphate buffered saline with 0.08% sodium azide

CONCENTRATION
See vial for concentration

ISOTYPE
IgG

APPLICATIONS
Western Blot

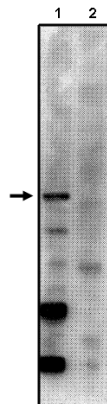
SPECIES REACTIVITY
Human, Mouse, Rat, Bovine

ACCESSION NUMBER
Q13362, Human

IMMUNOGEN

Antibody raised against synthetic peptide corresponding to amino acids 53 to 66 of the mammalian protein phosphatase 2 A/B conjugated to KLH.

Western blot analysis using anti-PP2A/B γ 2 antibody on total rat brain homogenate with control peptide (1) and blocking peptide (2).



POSITIVE CONTROL/TISSUE EXPRESSION

COMMENTS

Detects PP2A/B isoforms by Western blot analysis. Detects a 56 kDa band in whole rat brain homogenates. Optimal concentration should be evaluated by serial dilutions.

PURIFICATION

Ammonium Sulfate Precipitation

SHIP CONDITIONS

Ship at ambient temperature, freeze upon arrival

STORAGE CUSTOMER

Product should be stored at -20°C. Aliquot to avoid freeze/thaw cycles

STABILITY

Products are stable for one year from purchase when stored properly

REFERENCES

1. Strack, S., et al. Brain protein phosphatase 2A: Developmental regulation and distinct cellular and subcellular localization by B subunits. *J. Comp. Neurol.* 1998, 392, 515-527