



SZABO SCANDIC

Part of Europa Biosite

Produktinformation



Forschungsprodukte & Biochemikalien



Zellkultur & Verbrauchsmaterial



Diagnostik & molekulare Diagnostik



Laborgeräte & Service

Weitere Information auf den folgenden Seiten!
See the following pages for more information!



Lieferung & Zahlungsart

siehe unsere [Liefer- und Versandbedingungen](#)

Zuschläge

- Mindermengenzuschlag
- Trockeneiszuschlag
- Gefahrgutzuschlag
- Expressversand

SZABO-SCANDIC HandelsgmbH

Quellenstraße 110, A-1100 Wien

T. +43(0)1 489 3961-0

F. +43(0)1 489 3961-7

mail@szabo-scandic.com

www.szabo-scandic.com

[linkedin.com/company/szaboscandic](https://www.linkedin.com/company/szaboscandic) 



Protein Phosphatase 2 C alpha/beta. Rabbit Polyclonal Antibody

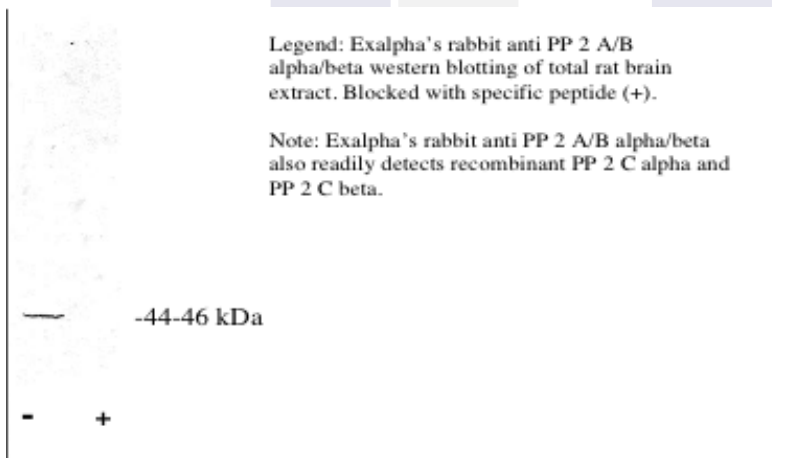
BACKGROUND

The immunogen is the purified peptide conjugated to KLH.

IMMUNOGEN

The purified peptide conjugated to KLH.

Legend: Exalpa's rabbit anti PP 2 A/B alpha/beta western blotting of total rat brain extract. Blocked with specific peptide (+).
Note: Exalpa's rabbit anti PP 2 A/B alpha/beta also readily detects recombinant PP 2 C alpha and PP 2 C beta.



Legend: Exalpa's rabbit anti PP 2 A/B alpha/beta western blotting of total rat brain extract. Blocked with specific peptide (+).

Note: Exalpa's rabbit anti PP 2 A/B alpha/beta also readily detects recombinant PP 2 C alpha and PP 2 C beta.

ORDERING INFORMATION

CATALOG NUMBER
P200P

SIZE
100 µg

FORM
Unconjugated

HOST/CLONE
Rabbit

FORMULATION
Provided as solution in phosphate buffered saline with 0.08% sodium azide

CONCENTRATION
See vial for concentration

ISOTYPE
IgG

APPLICATIONS
Western Blot

SPECIES REACTIVITY
Human, Mouse, Rat, Bovine

ACCESSION NUMBER
P38513/O75688 , Human

POSITIVE CONTROL/TISSUE EXPRESSION

COMMENTS

Applications: Immunoblotting and Immunoprecipitation dilution: 5-10ug/ml

PURIFICATION

Ammonium Sulfate Precipitation

SHIP CONDITIONS

Ship at ambient temperature, freeze upon arrival

STORAGE CUSTOMER

Product should be stored at -20°C. Aliquot to avoid freeze/thaw cycles

STABILITY

Products are stable for one year from purchase when stored properly

REFERENCES