



SZABO SCANDIC

Part of Europa Biosite

Produktinformation



Forschungsprodukte & Biochemikalien



Zellkultur & Verbrauchsmaterial



Diagnostik & molekulare Diagnostik



Laborgeräte & Service

Weitere Information auf den folgenden Seiten!
See the following pages for more information!



Lieferung & Zahlungsart

siehe unsere [Liefer- und Versandbedingungen](#)

Zuschläge

- Mindermengenzuschlag
- Trockeneiszuschlag
- Gefahrgutzuschlag
- Expressversand

SZABO-SCANDIC HandelsgmbH

Quellenstraße 110, A-1100 Wien

T. +43(0)1 489 3961-0

F. +43(0)1 489 3961-7

mail@szabo-scandic.com

www.szabo-scandic.com

[linkedin.com/company/szaboscandic](https://www.linkedin.com/company/szaboscandic) 

Protein Phosphatase X/C interior (PP4C). Sheep Polyclonal Antibody

BACKGROUND

The immunogen used to generate the purified antibody was a PP X/C peptide conjugated to KLH corresponding to the sequence. This peptide antibody corresponds to the internal sequence of PP X/C.

ORDERING INFORMATION

CATALOG NUMBER
P235P

SIZE
100 µg
FORM
Unconjugated

HOST/CLONE
Sheep

FORMULATION
Provided as solution in phosphate buffered saline with 0.08% sodium azide

CONCENTRATION
See vial for concentration

ISOTYPE
IgG

APPLICATIONS
Western Blot, Immunohistochemistry

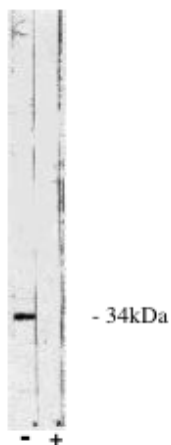
SPECIES REACTIVITY
Human, Mouse, Rat, Bovine

ACCESSION NUMBER
P60510 , Human

IMMUNOGEN

A PP X/C peptide conjugated to KLH

Legend: Exalpha's sheep anti PP X/C interior antibody western blot of total bovine testes homogenate.
(+) indicates presence of specific blocking peptide of control peptide (-).



POSITIVE CONTROL/TISSUE EXPRESSION

COMMENTS

Applications: Immunoblotting 1:500 to 1:1,000. Immunocytochemistry 1:500 to 1: 1,000.

PURIFICATION

Ammonium Sulfate Precipitation

SHIP CONDITIONS

Room Temperature

STORAGE CUSTOMER

Product should be stored at -20°C. Aliquot to avoid freeze/thaw cycles

STABILITY

Antibodies are stable for one year from purchase if stored frozen

REFERENCES