



SZABO SCANDIC

Part of Europa Biosite

Produktinformation



Forschungsprodukte & Biochemikalien



Zellkultur & Verbrauchsmaterial



Diagnostik & molekulare Diagnostik



Laborgeräte & Service

Weitere Information auf den folgenden Seiten!
See the following pages for more information!



Lieferung & Zahlungsart

siehe unsere [Liefer- und Versandbedingungen](#)

Zuschläge

- Mindermengenzuschlag
- Trockeneiszuschlag
- Gefahrgutzuschlag
- Expressversand

SZABO-SCANDIC HandelsgmbH

Quellenstraße 110, A-1100 Wien

T. +43(0)1 489 3961-0

F. +43(0)1 489 3961-7

mail@szabo-scandic.com

www.szabo-scandic.com

[linkedin.com/company/szaboscandic](https://www.linkedin.com/company/szaboscandic) 



ELK rec tyr Kinase (Eph B1 Cy.) Sheep Polyclonal Antibody

Eph B1 (ELK receptor) cytoplasmic; Tyrosine-protein kinase receptor EPH-2; Ephrin type B receptor 1; HEK6

BACKGROUND

The immunogen used for the anti-human ephB1 (Elk receptor) – cytoplasmic(CY) region was a GST fusion protein ephB1 (Elk receptor) CY corresponding to amino acid sequence 586-984 of the C terminal, cytoplasmic region and having a molecular weight of 116 kDa. EphB1, previously known as Elk (eph-like kinase), is a receptor tyrosine kinase of the highly tissue restricted family of eph proteins. EphB1 and other ephB family members are type 1 membrane spanning proteins, comprised of immunoglobulin, fibronectin type III, and cysteine rich subdomains in the ecto domain, and the single uninterrupted cytoplasmic tyrosine kinase domain upstream of a carboxyterminal sterile alpha motif (SAM) domain. EphB family proteins bind ephrins of the B class, ligands that are also transmembrane spanning proteins capable of transmitting signals. EphB1 is expressed predominantly in developing neural structures in embryos, and in vascular epithelium of kidney, and other tissues. Upon binding to alternatively oligomerized ephrin B1, ephB1 signals regulation of cell attachment and cell-cell assembly. Members of this protein family are implicated in neuronal and vascular cell targeting.

IMMUNOGEN

A GST fusion protein ephB1 (Elk receptor) - CY corresponding to amino acid sequence 586-984 of the C terminus region and having a molecular weight of 116 kDa

ORDERING INFORMATION

CATALOG NUMBER

S110P

SIZE

250 µg

FORM

Unconjugated

HOST/CLONE

Sheep

FORMULATION

Provided as solution in phosphate buffered saline with 0.08% sodium azide

CONCENTRATION

See vial for concentration

ISOTYPE

IgG

APPLICATIONS

Immunoprecipitation

SPECIES REACTIVITY

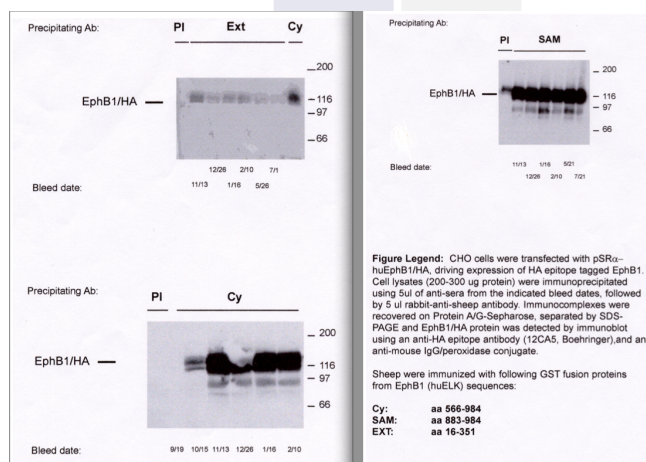
Human

ACCESSION NUMBER

Human P54762

Legend: CHO cells were transfected with pSRα-huEphB1/HA, driving expression of HA epitope tagged EphB1. Cell lysates (200-300µg protein) were immunoprecipitated using 5 µl rabbit-anti-sheep antibody. Immunocomplexes were recovered on Protein A/G-Sepharose, separated by SDS-PAGE and EphB1/HA protein was detected by immunoblot using an anti-HA epitope antibody (Cat. No. X1000), and an anti-mouse IgG/peroxidase conjugate. Sheep were immunized with the following GST fusion proteins from EphB1 (huELK) sequences:

Cy: aa 566-984
SAM: aa 883-984
EXT: aa 16-351



POSITIVE CONTROL/TISSUE EXPRESSION

Human brain

COMMENTS

Applications: 1-10 ug/ml for Western Blotting and 10-20 ug/ml for immunoprecipitation.

PURIFICATION

Ammonium Sulfate Precipitation

SHIP CONDITIONS

Room Temperature

STORAGE CUSTOMER

Product should be stored at -20°C. Aliquot to avoid freeze/thaw cycles

STABILITY

Antibodies are stable for one year from purchase if stored frozen

REFERENCES

1. Stein, E., et al. "Nck recruitment to Eph receptor, EphB1/ELK, couples ligand activation to c-Jun kinase." J. Biol. Chem., 273, 1303-1308 (1998)
2. Han, D.C., et al. "EphB1 associates with Grb7 and regulates cell migration." J. Biol. Chem., 277, 45655-45661 (2002)
3. Vindis, C., et al. "EphB1 recruits c-Src and p52Shc to activate MAPK/ERK and promote chemotaxis." J. Cell Biol., 162, 661-671 (2003)