



# SZABO SCANDIC

Part of Europa Biosite

## Produktinformation



Forschungsprodukte & Biochemikalien



Zellkultur & Verbrauchsmaterial



Diagnostik & molekulare Diagnostik



Laborgeräte & Service

Weitere Information auf den folgenden Seiten!  
See the following pages for more information!



### Lieferung & Zahlungsart

siehe unsere [Liefer- und Versandbedingungen](#)

### Zuschläge

- Mindermengenzuschlag
- Trockeneiszuschlag
- Gefahrgutzuschlag
- Expressversand

### SZABO-SCANDIC HandelsgmbH

Quellenstraße 110, A-1100 Wien

T. +43(0)1 489 3961-0

F. +43(0)1 489 3961-7

[mail@szabo-scandic.com](mailto:mail@szabo-scandic.com)

[www.szabo-scandic.com](http://www.szabo-scandic.com)

[linkedin.com/company/szaboscandic](https://www.linkedin.com/company/szaboscandic) 

**Nephronophthisis (pic). Rabbit Polyclonal Antibody**  
mpic, rabbit anti mouse nephrophthisis, pic

**BACKGROUND**

The immunogen used for the anti-mouse pic region was a GST fusion protein corresponding to the amino acid 612-691 of the C terminus region and having a molecular weight of 90 kD. Familial juvenile nephronophthisis (NPH) is an autosomal recessive cystic kidney disease that is the primary inherited cause of chronic renal failure in children.

**ORDERING INFORMATION**

**CATALOG NUMBER**

S135P

**SIZE**

250 µg

**FORM**

Unconjugated

**HOST/CLONE**

Rabbit

**FORMULATION**

Provided as solution in phosphate buffered saline with 0.08% sodium azide

**CONCENTRATION**

See vial for concentration

**ISOTYPE**

IgG

**APPLICATIONS**

Western Blot

**SPECIES REACTIVITY**

Mouse

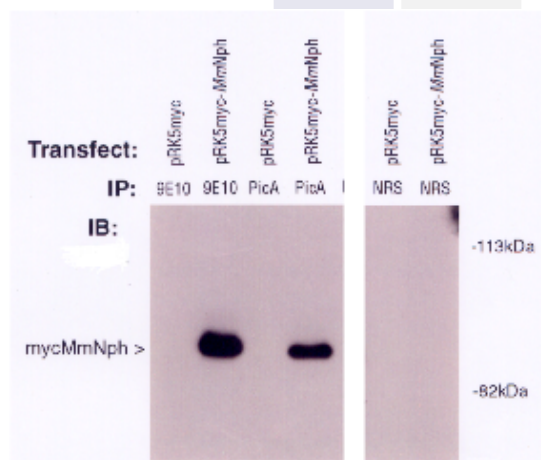
**ACCESSION NUMBER**

Human O15259

Mouse Q3TWM5

**IMMUNOGEN**

Recombinant protein corresponding to the amino acid 612-691 of the C terminus region and having a molecular weight of 90 kD



**POSITIVE CONTROL/TISSUE EXPRESSION**

Recombinant proteins conjugated to OVA, GST, His tags and other. Native pic proteins.

**COMMENTS**

Applications: Western Blot 2–10 ug/ml and for Immunoprecipitation 10-20 ug/ml.

**PURIFICATION**

Ammonium Sulfate Precipitation

**SHIP CONDITIONS**

Room Temperature

**STORAGE CUSTOMER**

Product should be stored at -20°C. Aliquot to avoid freeze/thaw cycles

**STABILITY**

Antibodies are stable for one year from purchase if stored frozen

**REFERENCES****PRODUCT SPECIFIC REFERENCES**