



SZABO SCANDIC

Part of Europa Biosite

Produktinformation



Forschungsprodukte & Biochemikalien



Zellkultur & Verbrauchsmaterial



Diagnostik & molekulare Diagnostik



Laborgeräte & Service

Weitere Information auf den folgenden Seiten!
See the following pages for more information!



Lieferung & Zahlungsart

siehe unsere [Liefer- und Versandbedingungen](#)

Zuschläge

- Mindermengenzuschlag
- Trockeneiszuschlag
- Gefahrgutzuschlag
- Expressversand

SZABO-SCANDIC HandelsgmbH

Quellenstraße 110, A-1100 Wien

T. +43(0)1 489 3961-0

F. +43(0)1 489 3961-7

mail@szabo-scandic.com

www.szabo-scandic.com

[linkedin.com/company/szaboscandic](https://www.linkedin.com/company/szaboscandic) 

LEF-1beta catenin. Mouse Monoclonal Antibody

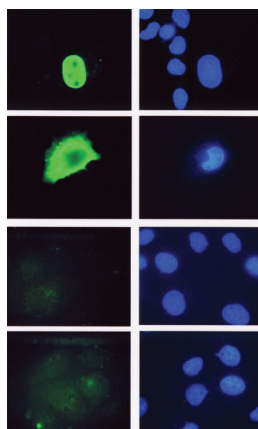
BACKGROUND

The immunogen for the anti-LEF-1 antibody was a full length protein. Lymphoid Enhancer Factor -1 is a transcription factor of the High Mobility Group of DNA binding proteins. It is one member of a family of four proteins referred to as LEF/TCF transcription factors (LEF-1, TCF-1, TCF-3 and TCF-4). These factors play a crucial role in WNT/Wingless signaling, a signal transduction cascade that directs cell differentiation. Aberrant activation of the WNT/Wingless pathway is also a root cause in the genesis of certain cancers such as colon cancer, melanoma and breast cancer. LEF-1 is expressed during development in many different differentiating tissues, and in a few tissues after birth. LEF-1 expression is required for proper development of breast, teeth, hair, whiskers and the trigeminal nerve. It is redundant with TCF-1 (for T Cell Factor-1) for correct development of T lymphocytes in the thymus. LEF-1 is a 399 amino acid protein that appears as a cluster of [polypeptides ranging in size between 55-57 kD on SDS-PAGE analysis. Alternative splice forms of LEF-1 and other LEF/TCF family members have been identified, but the expression pattern and relative abundance of these alternative forms have not been well studied. They can appear on westerns as smaller immunoreactive forms. Clone REMB1 recognizes the b-catenin binding domain of LEF-1.

IMMUNOGEN

Full length recombinant LEF-1 protein.

Immunofluorescence staining of Cos-1 cells transfected with (top to bottom) full length hLEF-1, a LEF-1 mutant missing the nuclear localization signal, TCF-4 and TCF-1. Cells were stained with Exalpha's LEF-1 antibody, clone REMB1 cat. # T100M and visualized with FITC conjugated mouse IgG. DAPI was used to detect all nuclei. The LEF-1 clone REMB1 recognized an epitope in the beta catenin binding domain that is present only in LEF-1.



ORDERING INFORMATION

CATALOG NUMBER

T100M

SIZE

250 µg

FORM

Affinity Purified

HOST/CLONE

Mouse Clone REMB1

FORMULATION

Provided as solution in phosphate buffered saline with 0.08% sodium azide

CONCENTRATION

See vial for concentration

ISOTYPE

IgG1

APPLICATIONS

Western Blot, Immunofluorescence, IHC (paraffin embedded)

SPECIES REACTIVITY

Human, Mouse

ACCESSION NUMBER

Q9UJU2, Human

POSITIVE CONTROL/TISSUE EXPRESSION

Jurkat cell lysate

COMMENTS

Antibody can be used for Western blotting (1-5 μ g/ml), immunofluorescence on paraformaldehyde-fixed cells (1:1000 or 1 μ g/ml), and IHC (paraffin embedded). Optimal concentration should be evaluated by serial dilutions.

PURIFICATION

Protein A/G Chromatography

SHIP CONDITIONS

Ship at ambient temperature, freeze upon arrival

STORAGE CUSTOMER

Product should be stored at -20°C. Aliquot to avoid freeze/thaw cycles

STABILITY

Products are stable for one year from purchase when stored properly

REFERENCES

Hsu SC; Galceran J; Grosschedl R. "Modulation of transcriptional regulation by LEF-1 in response to Wnt-1 signaling and association with beta-catenin." Mol Cell Biol, 18(8):4807-18 1998 Aug