



SZABO SCANDIC

Part of Europa Biosite

Produktinformation



Forschungsprodukte & Biochemikalien



Zellkultur & Verbrauchsmaterial



Diagnostik & molekulare Diagnostik



Laborgeräte & Service

Weitere Information auf den folgenden Seiten!
See the following pages for more information!



Lieferung & Zahlungsart

siehe unsere [Liefer- und Versandbedingungen](#)

Zuschläge

- Mindermengenzuschlag
- Trockeneiszuschlag
- Gefahrgutzuschlag
- Expressversand

SZABO-SCANDIC HandelsgmbH

Quellenstraße 110, A-1100 Wien

T. +43(0)1 489 3961-0

F. +43(0)1 489 3961-7

mail@szabo-scandic.com

www.szabo-scandic.com

[linkedin.com/company/szaboscandic](https://www.linkedin.com/company/szaboscandic) 



fli-1 . Sheep Polyclonal Antibody
fli-1, sheep anti human fli-1

BACKGROUND

Fli-1 is a member of the ets family of transcription factors and is a proto-oncogene involved in erythroleukemia and Ewing's Sarcoma.

ORDERING INFORMATION

CATALOG NUMBER
T100P

SIZE
250 µg

FORM
Affinity Purified

HOST/CLONE
Sheep

FORMULATION
Provided as solution in phosphate buffered saline with 0.08% sodium azide

CONCENTRATION
See vial for concentration

ISOTYPE
IgG

APPLICATIONS
Western Blot

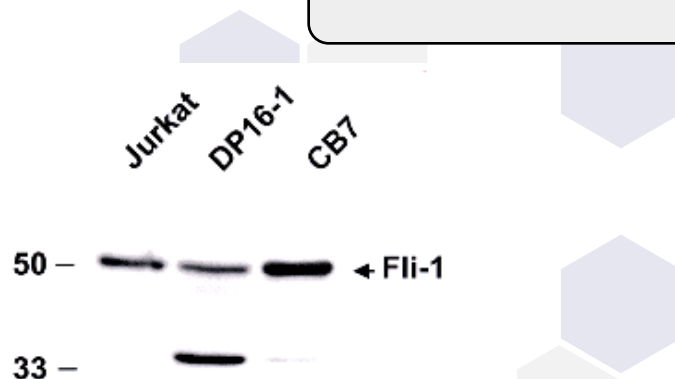
SPECIES REACTIVITY
Human, Mouse

ACCESSION NUMBER
Human Q01543

IMMUNOGEN

Protein corresponding to amino acid sequence 1-239 of the N terminus and having a molecular weight of 52 kDa

Detection of Fli-1 by western blotting: Total protein (20 micrograms) extracted from murine erythroleukemia cell lines CB7 and DP16-1 and Jurkat human T-cell line were separated on a 10% acrylamide gel, blotted to nylon and Western blotted with anti-Fli1-1 antibody (dilution 1:500). The location of 52kDa Fli-1 protein is indicated by an arrow.



Detection of Fli-1 by western blotting: Total protein (20 micrograms) extracted from murine erythroleukemia cell lines CB7 and DP16-1 and Jurkat human T-cell line were separated on a 10% acrylamide gel, blotted to nylon and Western blotted with anti-Fli-1 antibody (dilution 1:500). The location of 52kDa Fli-1 protein is indicated by an arrow.

POSITIVE CONTROL/TISSUE EXPRESSION

Recombinant proteins conjugated to OVA, GST, His tags and other. Native fli-1 proteins.

COMMENTS

Applications: Western Blot at 1:500

PURIFICATION

Ammonium Sulfate Precipitation

SHIP CONDITIONS

Room Temperature

STORAGE CUSTOMER

Product should be stored at -20°C. Aliquot to avoid freeze/thaw cycles

STABILITY

Antibodies are stable for one year from purchase if stored frozen

REFERENCES**PRODUCT SPECIFIC REFERENCES**