



SZABO SCANDIC

Part of Europa Biosite

Produktinformation



Forschungsprodukte & Biochemikalien



Zellkultur & Verbrauchsmaterial



Diagnostik & molekulare Diagnostik



Laborgeräte & Service

Weitere Information auf den folgenden Seiten!
See the following pages for more information!



Lieferung & Zahlungsart

siehe unsere [Liefer- und Versandbedingungen](#)

Zuschläge

- Mindermengenzuschlag
- Trockeneiszuschlag
- Gefahrgutzuschlag
- Expressversand

SZABO-SCANDIC HandelsgmbH

Quellenstraße 110, A-1100 Wien

T. +43(0)1 489 3961-0

F. +43(0)1 489 3961-7

mail@szabo-scandic.com

www.szabo-scandic.com

[linkedin.com/company/szaboscandic](https://www.linkedin.com/company/szaboscandic) 



HA. Mouse Monoclonal Antibody

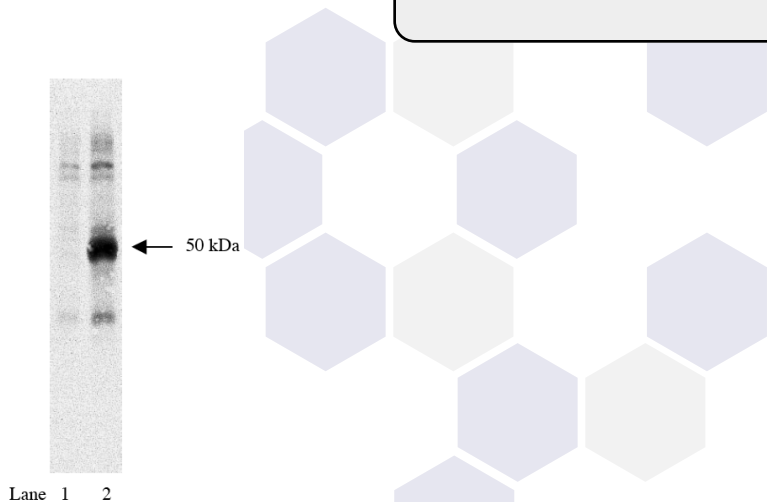
BACKGROUND

An HA tag is frequently incorporated into recombinant proteins for a variety of purposes. An anti-HA antibody can then be used to detect the protein on western blot or to immunoprecipitate the recombinant protein when doing binding studies with transfected cells. Balb/C mice were immunized with a 9 aa peptide to influenza virus hemagglutinin (HA). The resultant hybridomas were selected for reactivity with the immunogen by ELISA and with the antigen by western blot. The antibody was purified to >95% homogeneity by standard chromatographic techniques.

IMMUNOGEN

Balb/C mice were immunized with a 9 amino acid peptide to influenza virus hemagglutinin

Western blot using anti-HA tag antibody (Cat. No. X1000) on HEK293 cells (1) and HEK293 cells expressing HA-tagged Rem protein at 1:1000 dilution.



ORDERING INFORMATION

CATALOG NUMBER
X1000

SIZE
100 μ g

FORM
Unconjugated

HOST/CLONE
Mouse Clone 12CA5

FORMULATION
Provided as sterile filtered solution containing 10 mM Tris, pH 8.2, 100 mM sodium chloride, 50% glycerol, 3 mM sodium azide

CONCENTRATION
See vial for concentration

ISOTYPE
IgG2b

APPLICATIONS
Enzyme Immunoassay, Western Blot, IP, IHC

SPECIES REACTIVITY

ACCESSION NUMBER
Q3TBD2, Mouse

POSITIVE CONTROL/TISSUE EXPRESSION

HA tagged proteins

COMMENTS

Optimal concentration should be evaluated by serial dilutions.

PURIFICATION

Protein A/G Chromatography

SHIP CONDITIONS

Ship at ambient temperature, freeze upon arrival

STORAGE CUSTOMER

Product should be stored at -20°C. Aliquot to avoid freeze/thaw cycles

STABILITY

Products are stable for one year from purchase when stored properly

REFERENCES