



SZABO SCANDIC

Part of Europa Biosite

Produktinformation



Forschungsprodukte & Biochemikalien



Zellkultur & Verbrauchsmaterial



Diagnostik & molekulare Diagnostik



Laborgeräte & Service

Weitere Information auf den folgenden Seiten!
See the following pages for more information!



Lieferung & Zahlungsart

siehe unsere [Liefer- und Versandbedingungen](#)

Zuschläge

- Mindermengenzuschlag
- Trockeneiszuschlag
- Gefahrgutzuschlag
- Expressversand

SZABO-SCANDIC HandelsgmbH

Quellenstraße 110, A-1100 Wien

T. +43(0)1 489 3961-0

F. +43(0)1 489 3961-7

mail@szabo-scandic.com

www.szabo-scandic.com

[linkedin.com/company/szaboscandic](https://www.linkedin.com/company/szaboscandic) 

BrdU (bromodeoxyuridine). Mouse Monoclonal Antibody

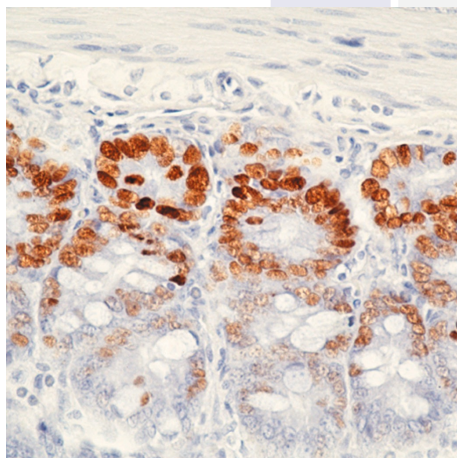
BACKGROUND

Bromodeoxyuridine (BrdU) is a thymidine analog which is selectively incorporated into the DNA of proliferating cells to provide a marker for the DNA being replicated. The number of proliferating cells can then be detected in cell lysates, tissue sections or suspensions using an antibody specific for the BrdU. Previous methods of detecting DNA included the use of [³H]-thymidine which would be incorporated into the DNA and could then the DNA could be quantified by autoradiography or scintillation counting. These methods are more difficult and require more cleanup due to the radioactive material. An immunohistochemical assay provides a much simpler and cleaner method for detecting DNA in cells. This antibody is also useful for detecting proliferating cells by flow cytometry or immunofluorescence staining.

IMMUNOGEN

Bromodeoxyuridine conjugated to *Helix Pomatia* Haemocyanin used to immunize BALB/c mice

Immunohistochemical staining using BrdU antibody (Cat. No. X1028) on mouse intestine from mice treated with BrdU.



ORDERING INFORMATION

CATALOG NUMBER

X1028

SIZE

100 µg

FORM

Unconjugated

HOST/CLONE

Mouse Clone MoBU

FORMULATION

Provided as solution in phosphate buffered saline with 0.08% sodium azide

CONCENTRATION

See vial for concentration

ISOTYPE

IgG1

APPLICATIONS

Flow Cytometry,
Immunohistochemistry

SPECIES REACTIVITY

N/A

ACCESSION NUMBER

.

POSITIVE CONTROL/TISSUE EXPRESSION

COMMENTS

Reacts with cells containing incorporated BrdU, showing a clear, nucleus confined, speckled pattern. Optimal concentration should be evaluated by serial dilutions. Applications: Flow Cytometry Staining, Immunohistochemistry.

PURIFICATION

Protein A/G Chromatography

SHIP CONDITIONS

Ship at ambient temperature, freeze upon arrival

STORAGE CUSTOMER

Product should be stored at -20°C. Aliquot to avoid freeze/thaw cycles

STABILITY

Products are stable for one year from purchase when stored properly

REFERENCES

1. Nakamura, S., et al. Application of bromodeoxyuridine (BrdU) and anti-BrdU monoclonal antibody for the in vivo analysis of proliferative characteristics of human leukemia cells in bone marrows. *Oncology* 1991, 48, 285-289
2. Wilson, G., Cell kinetic studies using a monoclonal antibody to bromodeoxyuridine. *Methods Mol. Biol.* 1998, 80, 255-266
3. Gray, J. (Ed), Special Issue: Monoclonal antibodies against bromodeoxyuridine *Cytometry* 1985, Vol. 6(6)