



# SZABO SCANDIC

Part of Europa Biosite

## Produktinformation



Forschungsprodukte & Biochemikalien



Zellkultur & Verbrauchsmaterial



Diagnostik & molekulare Diagnostik



Laborgeräte & Service

Weitere Information auf den folgenden Seiten!  
See the following pages for more information!



### Lieferung & Zahlungsart

siehe unsere [Liefer- und Versandbedingungen](#)

### Zuschläge

- Mindermengenzuschlag
- Trockeneiszuschlag
- Gefahrgutzuschlag
- Expressversand

### SZABO-SCANDIC HandelsgmbH

Quellenstraße 110, A-1100 Wien

T. +43(0)1 489 3961-0

F. +43(0)1 489 3961-7

[mail@szabo-scandic.com](mailto:mail@szabo-scandic.com)

[www.szabo-scandic.com](http://www.szabo-scandic.com)

[linkedin.com/company/szaboscandic](https://www.linkedin.com/company/szaboscandic) 



LEF-1 alternate exon. Mouse Monoclonal Antibody

**BACKGROUND**

Lymphoid Enhancer Factor-1 (LEF-1) is an HMG 1/2-like DNA binding/bending protein and is a member of the LEF/TCF transcription factor family. There are four LEF/TCF family members in mammalian systems (LEF-1, TCF-1, TCF-3 and TCF-4), and orthologs to these factors have been identified in many different species. LEF/TCFs are downstream mediators of Wnt/Wingless signals. Wnt signaling drives cell polarity, cell fate and cell growth decisions in embryonic tissues and in post-natal tissues that continue to develop from mitotically active stem cell precursors. Misregulation of Wnt signaling is also implicated as a root cause of many different cancers, such as colon cancer, melanoma, breast cancer, prostate cancer and others. This antibody is specific for an epitope between a.a. 227-231. This sequence lies within the context dependent activation domain of LEF-1 and appears to be an alternate splice variant exon of the LEF-1 gene

**ORDERING INFORMATION**

**CATALOG NUMBER**  
X1075M

**SIZE**  
100 µg  
**FORM**  
Unconjugated

**HOST/CLONE**  
Mouse Clone 1C3

**FORMULATION**  
Provided as solution in phosphate buffered saline with 0.08% sodium azide

**CONCENTRATION**  
See vial for concentration

**ISOTYPE**  
IgG1

**APPLICATIONS**  
Western Blot

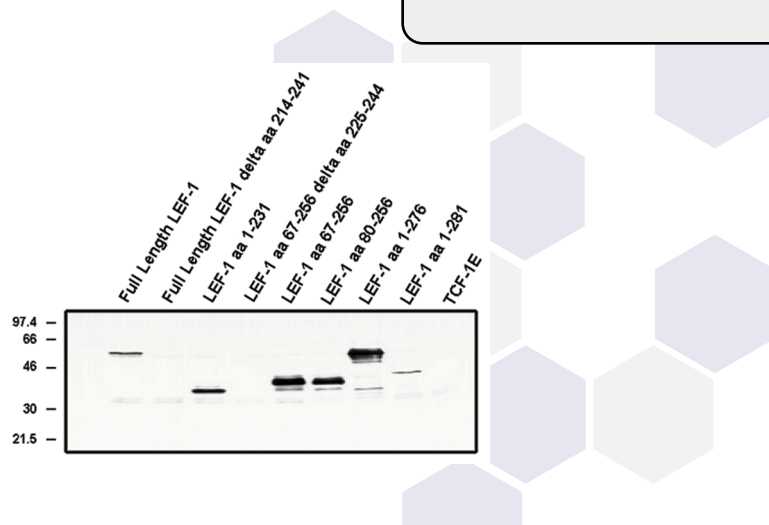
**SPECIES REACTIVITY**  
Human

**ACCESSION NUMBER**  
,

**IMMUNOGEN**

Recombinant full-length LEF-1 protein

Western blot analysis using LEF-1 (alternate exon) antibody (Cat. No. X1075M) on Cos cells transfected with the indicated proteins.



## **POSITIVE CONTROL/TISSUE EXPRESSION**

### **COMMENTS**

Detect LEF-1 protein containing the alternately spliced exon between amino acids 212-241 by Western blot at 1-5  $\mu\text{g/ml}$ . Optimal concentration should be evaluated by serial dilutions.

### **PURIFICATION**

Protein A/G Chromatography

### **SHIP CONDITIONS**

Ship at ambient temperature, freeze upon arrival

### **STORAGE CUSTOMER**

Product should be stored at  $-20^{\circ}\text{C}$ . Aliquot to avoid freeze/thaw cycles

### **STABILITY**

Products are stable for one year from purchase when stored properly

### **REFERENCES**

1. Riese, J., et al., LEF-1, a nuclear factor coordinating signaling inputs from wingless and decapentaplegic. *Cell* 1997, 88, 777-787
2. Giese, K., et al. Functional analysis of DNA bending and unwinding by the high mobility group domain of LEF-1. *Proc. Natl. Acad. Sci. USA* 1997, 94, 12845-12850
3. Behrens, J., et al. Functional interaction of beta-catenin with the transcription factor LEF-1. *Nature* 1996, 382, 638-642
4. Giese, K. and Grosschedl, R. LEF-1 contains an activation domain that stimulates transcription only in a specific context of factor-binding sites. *EMBO J.* 1993, 12, 4667-4676
5. Hovanes, K., et al., The human LEF-1 gene contains a promoter preferentially active in lymphocytes and encodes multiple isoforms derived from alternative splicing. *Nucleic Acids Res.* 2000, 28, 1994-2003