



SZABO SCANDIC

Part of Europa Biosite

Produktinformation



Forschungsprodukte & Biochemikalien



Zellkultur & Verbrauchsmaterial



Diagnostik & molekulare Diagnostik



Laborgeräte & Service

Weitere Information auf den folgenden Seiten!
See the following pages for more information!



Lieferung & Zahlungsart

siehe unsere [Liefer- und Versandbedingungen](#)

Zuschläge

- Mindermengenzuschlag
- Trockeneiszuschlag
- Gefahrgutzuschlag
- Expressversand

SZABO-SCANDIC HandelsgmbH

Quellenstraße 110, A-1100 Wien

T. +43(0)1 489 3961-0

F. +43(0)1 489 3961-7

mail@szabo-scandic.com

www.szabo-scandic.com

[linkedin.com/company/szaboscandic](https://www.linkedin.com/company/szaboscandic) 



TAK1. Sheep Polyclonal Antibody

BACKGROUND

C-TAK1 (Cdc25C associated protein kinase) is a ubiquitously expressed protein kinase found in human tissues and cell lines and can phosphorylate Cdc25C on serine 216 *in vitro*. C-TAK1 is distinct from the DNA damage checkpoint kinase Chk1 and may regulate interactions between Cdc25C and 14-3-3 *in vivo* by phosphorylating Cdc25C at serine 216.

ORDERING INFORMATION

CATALOG NUMBER
X1088P

SIZE
250 μ g

FORM
Unconjugated

HOST/CLONE
Sheep

FORMULATION
Provided as solution in phosphate buffered saline with 0.08% sodium azide

CONCENTRATION
See vial for concentration

ISOTYPE
IgG

APPLICATIONS
Immunoprecipitation, Western Blot

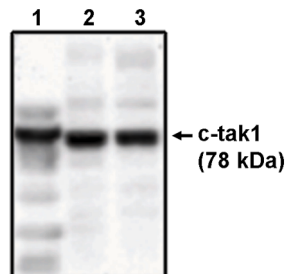
SPECIES REACTIVITY
Human

ACCESSION NUMBER
,

IMMUNOGEN

Recombinant, full-length His-tagged human C-TAK1 produced in E. Coli.

Western blot analysis using c-tak1 antibody (Cat. No. X1088P) on His-tagged c-tak1 (1), RKO cell lysate (2) and HCT116 cell lysate (3).



POSITIVE CONTROL/TISSUE EXPRESSION

Recombinant His-tagged C-TAK1 protein

COMMENTS

Antibody detects c-tak1 by Western blot analysis at 1 to 5 $\mu\text{g/ml}$. Detects c-tak1 in RKO and HCT116 cell lysates. Optimal concentration should be evaluated by serial dilutions.

PURIFICATION

Ammonium Sulfate Precipitation

SHIP CONDITIONS

Ship at ambient temperature, freeze upon arrival

STORAGE CUSTOMER

Product should be stored at -20°C . Aliquot to avoid freeze/thaw cycles

STABILITY

Products are stable for one year from purchase when stored properly

REFERENCES

1. Peng, C.Y., et al. C-TAK1 protein kinase phosphorylates human Cdc25C on serine 216 and promotes 14-3-3 protein binding. *Cell Growth Differ.* 1998, 9, 197-208
2. Ogg, S., et al. Purification of a serine kinase that associates with and phosphorylates human Cdc25C on serine 216. *J. Biol. Chem.* 1994, 269, 30461-30469
3. Busby, E.C., et al. The radiosensitizing agent 7-hydroxystaurosporine (UCN-01) inhibits the DNA damage checkpoint kinase hChk1. *Cancer Res.* 2000, 60, 2108-2112