



SZABO SCANDIC

Part of Europa Biosite

Produktinformation



Forschungsprodukte & Biochemikalien



Zellkultur & Verbrauchsmaterial



Diagnostik & molekulare Diagnostik



Laborgeräte & Service

Weitere Information auf den folgenden Seiten!
See the following pages for more information!



Lieferung & Zahlungsart

siehe unsere [Liefer- und Versandbedingungen](#)

Zuschläge

- Mindermengenzuschlag
- Trockeneiszuschlag
- Gefahrgutzuschlag
- Expressversand

SZABO-SCANDIC HandelsgmbH

Quellenstraße 110, A-1100 Wien

T. +43(0)1 489 3961-0

F. +43(0)1 489 3961-7

mail@szabo-scandic.com

www.szabo-scandic.com

[linkedin.com/company/szaboscandic](https://www.linkedin.com/company/szaboscandic) 



Lfc. Sheep Polyclonal Antibody

BACKGROUND

Lfc is a 118 kDa protein discovered in a screen for oncogenes in NIH 3T3 cells. Lfc is a signaling protein related to Lbc and is part of the Dbl family of proteins. Lfc is a guanine-nucleotide exchange factor (GEF) for the Rho family of small GTPases. Lfc has also been shown to be upstream of the serine-threonine kinase JNK. Lfc has also been shown to mediate the activation of the Rac signaling pathway.

ORDERING INFORMATION

CATALOG NUMBER
X1089P

SIZE
250 μ g

FORM
Unconjugated

HOST/CLONE
Sheep

FORMULATION
Provided as solution in phosphate buffered saline with 0.08% sodium azide

CONCENTRATION
See vial for concentration

ISOTYPE
IgG

APPLICATIONS
Western Blot, Immunoprecipitation, Immunofluorescence

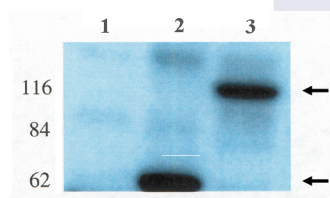
SPECIES REACTIVITY
Mouse

ACCESSION NUMBER
,

IMMUNOGEN

Antibody developed using protein corresponding to amino acids 2 to 447 of the Lfc protein fused to GST.

Western blot analysis using anti-Lfc antibody on HEK-293 cell transfected with vector alone (1), lfc-short (2) and lfc-long (3).



COMMENTS

Detects Lfc in mouse tissues by immunoprecipitation-Western blot at 4 µg/ml. Detects a 118 kDa band in mouse tissue extracts corresponding to wild-type Lfc. Can also be used in immunofluorescence assays. Optimal concentration should be evaluated by serial dilutions.

PURIFICATION

Ammonium Sulfate Precipitation

SHIP CONDITIONS

Ship at ambient temperature, freeze upon arrival

STORAGE CUSTOMER

Product should be stored at -20°C. Aliquot to avoid freeze/thaw cycles

STABILITY

Products are stable for one year from purchase when stored properly

REFERENCES

1. Glaven, J.A., et al. The Dbl-related protein, Lfc, localizes to microtubules and mediates the activation of Rac signaling pathways in cells. *J. Biol. Chem.* 1999, 274, 2279-2285
2. Glaven, J.A., et al. Lfc and Lsc oncoproteins represent two new guanine nucleotide exchange factors for the Rho GTP-binding protein. *J. Biol. Chem.* 1996, 271, 27374-27381
3. Whitehead, I., et al. Expression cloning of lfc, a novel oncogene with structural similarities to guanine nucleotide exchange factors and to the regulatory region of protein kinase C. *J. Biol. Chem.* 1995, 270, 18388-18395