



SZABO SCANDIC

Part of Europa Biosite

Produktinformation



Forschungsprodukte & Biochemikalien



Zellkultur & Verbrauchsmaterial



Diagnostik & molekulare Diagnostik



Laborgeräte & Service

Weitere Information auf den folgenden Seiten!
See the following pages for more information!



Lieferung & Zahlungsart

siehe unsere [Liefer- und Versandbedingungen](#)

Zuschläge

- Mindermengenzuschlag
- Trockeneiszuschlag
- Gefahrgutzuschlag
- Expressversand

SZABO-SCANDIC HandelsgmbH

Quellenstraße 110, A-1100 Wien

T. +43(0)1 489 3961-0

F. +43(0)1 489 3961-7

mail@szabo-scandic.com

www.szabo-scandic.com

[linkedin.com/company/szaboscandic](https://www.linkedin.com/company/szaboscandic) 

Sphingosine 1 Phosphate Receptor 1 (EDG-1) CT. Rabbit Polyclonal Antibody

BACKGROUND

EDG-1 belongs to a family of G-protein coupled receptors whose ligands are lysophospholipids. The ligand for EDG-1 is sphingosine-1-phosphate. There are 8 known members of the EDG receptor family and they are implicated in mediating growth related effects such as induction of cellular proliferation, alterations in differentiation and survival and suppression of apoptosis. They also evoke cellular effector functions that are dependent on cytoskeletal responses such as contraction, secretion, adhesion and chemotaxis. EDG receptors are developmentally regulated and differ in tissue distribution. They couple to multiple types of G proteins to signal through ras and MAP kinase, rho, phospholipase C and several protein tyrosine kinases. EDG-1 is expressed in cardiovascular, leukocyte-containing and other tissues.

ORDERING INFORMATION

CATALOG NUMBER

X1093P

SIZE

100 µg

FORM

Unconjugated

HOST/CLONE

Rabbit

FORMULATION

Provided as solution in phosphate buffered saline with 0.08% sodium azide

CONCENTRATION

See vial for concentration

ISOTYPE

IgG

APPLICATIONS

Western Blot

SPECIES REACTIVITY

Human, Mouse, Rat

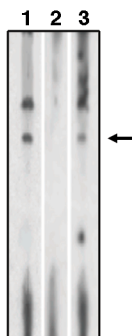
ACCESSION NUMBER

,

IMMUNOGEN

Synthetic peptide derived from the C-terminal of the EDG-1 receptor

Western blot analysis of lysates of RH7777 cells transfected with full length human EDG-1 protein using anti-EDG-1 CT antibody at 10 µg/ml (1), antibody preincubated with specific blocking peptide (2) and antibody preincubated with non-specific control peptide (3) using Pierce Femto Signal substrate.



POSITIVE CONTROL/TISSUE EXPRESSION

RH7777 cells transfected with full length EDG-1 protein.

COMMENTS

Detects EDG1 receptors at concentration of 5-10 µg/ml by Western blot using a human EDG1 receptor transfected cell line. Detects an approximately 44 kDa band in RH7777 cells transfected with full length human EDG1. Due to low expression of EDG receptors, we recommend use of Pierce Femto Signal substrate for western blot development. Optimal concentration should be evaluated by serial dilutions.

PURIFICATION

Ammonium Sulfate Precipitation

SHIP CONDITIONS

Ship at ambient temperature, freeze upon arrival

STORAGE CUSTOMER

Product should be stored at -20°C. Aliquot to avoid freeze/thaw cycles

STABILITY

Products are stable for one year from purchase when stored properly

REFERENCES

1. Edg-1, the G protein-coupled receptor for sphingosine-1-phosphate, is essential for vascular maturation. Liu, Y., et al., J. Clin. Invest., 2000, 106, 951-961.
2. Expression and characterization of edg-1 receptors in rat cardiomyocytes calcium deregulation in response to sphingosine-1-phosphate. Nakajima, N., et al., Eur. J. Biochem., 2000, 267, 5679-5686.
3. Diversity of cellular receptors and functions for the lysophospholipid growth factors lysophosphatidic acid and sphingosine 1-phosphate. Goetzl, E.J. and An, S.,FASEB J., 12(15), 1589-1598 (1998).

Specific Product References

- 1) Western Blot: "Transduction of Multiple Effects of Sphingosine 1-Phosphate (S1P) on T Cell Function by the S1P1 G Protein Coupled Receptor." Dorsam, Glenn, et al., Journal of Immunology, 2003, 3500-3507.
- 2) Immunocytochemistry: "Differential transactivation of Sphingoise-1 Phosphate Receptors modulate NGF-induced neurite extension." Toman, Rachele E., et al., Journal of Cell Biology, Aug. 2, 2004, vol 166, no.3, 381-392.
- 3) Western Blot: "Transactivation of Sphingosine-1-Phosphate Receptors by FceRI Triggering is Required for Normal Mast Cell Degranulation and Chemotaxis." Jolly, Puneet S., et al., Journal of Experimental Medicine, April 5, 2004, vol. 199, no. 7, 959-970.
- 4) Western Blot: "Induction of pro-angiogenic signaling by a synthetic peptide derived from the second intracellular loop of S1P3 (EDG3)." Blood, 2003, 102, 2099-2107.