



SZABO SCANDIC

Part of Europa Biosite

Produktinformation



Forschungsprodukte & Biochemikalien



Zellkultur & Verbrauchsmaterial



Diagnostik & molekulare Diagnostik



Laborgeräte & Service

Weitere Information auf den folgenden Seiten!
See the following pages for more information!



Lieferung & Zahlungsart

siehe unsere [Liefer- und Versandbedingungen](#)

Zuschläge

- Mindermengenzuschlag
- Trockeneiszuschlag
- Gefahrgutzuschlag
- Expressversand

SZABO-SCANDIC HandelsgmbH

Quellenstraße 110, A-1100 Wien

T. +43(0)1 489 3961-0

F. +43(0)1 489 3961-7

mail@szabo-scandic.com

www.szabo-scandic.com

[linkedin.com/company/szaboscandic](https://www.linkedin.com/company/szaboscandic) 

bcl 10 (NT) (CipER, CLAP). Rabbit Polyclonal Antibody
CIPER; mE10; CARMEN; CLAP

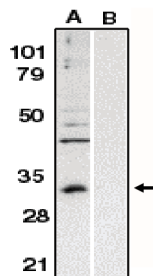
BACKGROUND

Apoptosis is related to many diseases including cancer. Cell death signals are transduced by death domain (DD) and caspase recruitment domain (CARD) containing molecules and a caspase family of proteases. CARD containing cell death regulators include ARC, RAIDD, Apaf-1, caspase-9, and caspase-2. A novel CARD containing protein was recently identified by several groups and designated *Bcl10*, *CIPER*, *mE10*, *CARMEN*, *CLAP* (1-6). *Bcl10* is a cellular homolog of the equine herpesvirus-2 E-10 gene. Overexpression of *Bcl10* induces JNK, p38, and NF-κB activation (1,2,4,6). *Bcl10* interacts with caspase-9 and enhances pro-caspase-9 processing (3) and induces apoptosis through caspase-9 activation (3,6). *BCL10* exhibits a variety of mutations in MALT lymphomas and in B and T cell lineage lymphomas indicating that it may be commonly involved in the pathogenesis of human malignancy (1,5). *BCL10* is expressed in many human and murine tissues and cell lines (2-6).

IMMUNOGEN

Synthetic peptide corresponding to amino acids 5 to 19 of the human BCL-10 protein.

Western blot analysis using anti-Bcl-10 (NT) antibody at 1 μg/ml on Raji whole cell lysate in the absence (A) and presence (B) of blocking peptide.



ORDERING INFORMATION

CATALOG NUMBER

X1119P

SIZE

100 μg

FORM

Unconjugated

HOST/CLONE

Rabbit

FORMULATION

Provided in phosphate buffered saline solution containing 0.02% sodium azide as a preservative

CONCENTRATION

See vial for concentration

ISOTYPE

IgG

APPLICATIONS

Western Blot

SPECIES REACTIVITY

Human

ACCESSION NUMBER

Human O95999

POSITIVE CONTROL/TISSUE EXPRESSION

Raji whole cell lysate

COMMENTS

Detects *BCL10* by Western blot at 1 $\mu\text{g/ml}$. Detects a 31 kDa band in Raji whole cell lysate. Optimal concentration should be evaluated by serial dilutions.

PURIFICATION

Antigen Immunoaffinity Purification

SHIP CONDITIONS

Ship at ambient temperature, freeze upon arrival

STORAGE CUSTOMER

Product should be stored at -20°C . Aliquot to avoid freeze/thaw cycles

STABILITY

Products are stable for one year from purchase when stored properly

REFERENCES

1. Willis, T.G., et al. Bcl10 is involved in t(1;14)(p22;q32) of MALT B cell lymphoma and mutated in multiple tumor types. *Cell* 1999, 96, 35-45
2. Koseki, T., et al. CIPER, a novel NF kappaB-activating protein containing a caspase recruitment domain with homology to Herpesvirus-2 protein E10. *J. Biol. Chem.* 1999, 274, 9955-61
3. Yan, M., et al., mE10, a novel caspase recruitment domain-containing proapoptotic molecule. *J. Biol. Chem.* 1999, 274, 10287-92
4. Thome, M., et al., Equine herpesvirus-2 E10 gene product, but not its cellular homologue, activates NF-kappaB transcription factor and c-Jun N-terminal kinase. *J. Biol. Chem.* 1999, 274, 9962-8
5. Zhang, Q., et al., Inactivating mutations and overexpression of BCL10, a caspase recruitment domain-containing gene, in MALT lymphoma with t(1;14)(p22;q32). *Nat. Genet.* 1999, 22, 63-8
6. Srinivasula, S.M., et al., CLAP, a novel caspase recruitment domain-containing protein in the tumor necrosis factor receptor pathway, regulates NF-kappaB activation and apoptosis. *J. Biol. Chem.* 1999, 274, 17946-54

PRODUCT SPECIFIC REFERENCES