



SZABO SCANDIC

Part of Europa Biosite

Produktinformation



Forschungsprodukte & Biochemikalien



Zellkultur & Verbrauchsmaterial



Diagnostik & molekulare Diagnostik



Laborgeräte & Service

Weitere Information auf den folgenden Seiten!
See the following pages for more information!



Lieferung & Zahlungsart

siehe unsere [Liefer- und Versandbedingungen](#)

Zuschläge

- Mindermengenzuschlag
- Trockeneiszuschlag
- Gefahrgutzuschlag
- Expressversand

SZABO-SCANDIC HandelsgmbH

Quellenstraße 110, A-1100 Wien

T. +43(0)1 489 3961-0

F. +43(0)1 489 3961-7

mail@szabo-scandic.com

www.szabo-scandic.com

[linkedin.com/company/szaboscandic](https://www.linkedin.com/company/szaboscandic)

Amyloid Precursor Protein (APP) (NT). Rabbit Polyclonal Antibody
Rabbit anti- β -Amyloid Peptide Precursor (Amyloid- β Peptide N-terminal)

BACKGROUND

Accumulation of the amyloid- β peptide ($A\beta$) in the cerebral cortex is a critical event in the pathogenesis of Alzheimer's disease. The β -amyloid protein precursor (APP) is cleaved by β -secretase, producing a soluble derivative of the protein and a membrane anchored 99-amino acid carboxy-terminal fragment (C99). The C99 fragment serves as substrate for γ -secretase to generate the 4 kDa amyloid- β peptide ($A\beta$), which is deposited in the brains of all sufferers of Alzheimer's disease.

ORDERING INFORMATION

CATALOG NUMBER
X1133P

SIZE
100 μ g
FORM
Unconjugated

HOST/CLONE
Rabbit

FORMULATION
Provided in phosphate buffered saline solution containing 0.02% sodium azide as a preservative

CONCENTRATION
See vial for concentration

ISOTYPE
IgG

APPLICATIONS
Western Blot

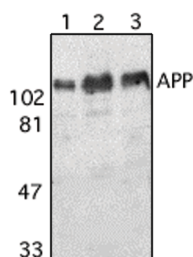
SPECIES REACTIVITY
Human, Mouse, Rat

ACCESSION NUMBER
Human P05067

IMMUNOGEN

Synthetic peptide corresponding to amino acids 653 to 662 of human amyloid A4 protein precursor (APP) or 1 to 10 of the 4kDa Amyloid- β peptide generated by β and γ -secretases. This sequence is identical to those of rabbit, pig, bovine, guinea pig and chicken.

Western blot analysis using APP (Ab-NT) antibody (Cat. No. X1133P) on human (1), mouse (2) and rat (3) brain tissue lysate.



POSITIVE CONTROL/TISSUE EXPRESSION

Murine brain lysate

COMMENTS

Detects APP and Ab peptide by Western blot at 0.5 to 1 $\mu\text{g/ml}$. Detects an approximately 120 kDa band in human, mouse and rat brain tissue lysates. Optimal concentration should be evaluated by serial dilutions.

PURIFICATION

Antigen Immunoaffinity Purification

SHIP CONDITIONS

Ship at ambient temperature, freeze upon arrival

STORAGE CUSTOMER

Product should be stored at -20°C . Aliquot to avoid freeze/thaw cycles

STABILITY

Products are stable for one year from purchase when stored properly

REFERENCES

1. Ponte, P., et al. A new A4 amyloid mRNA contains a domain homologous to serine proteinase inhibitors. Nature 1988, 331, 525-527.
2. Selkoe, D.J. Cell biology of the amyloid beta-protein precursor and the mechanism of Alzheimer's disease. Annu. Rev. Cell Biol. 1994, 10, 373-403

PRODUCT SPECIFIC REFERENCES