



SZABO SCANDIC

Part of Europa Biosite

Produktinformation



Forschungsprodukte & Biochemikalien



Zellkultur & Verbrauchsmaterial



Diagnostik & molekulare Diagnostik



Laborgeräte & Service

Weitere Information auf den folgenden Seiten!
See the following pages for more information!



Lieferung & Zahlungsart

siehe unsere [Liefer- und Versandbedingungen](#)

Zuschläge

- Mindermengenzuschlag
- Trockeneiszuschlag
- Gefahrgutzuschlag
- Expressversand

SZABO-SCANDIC HandelsgmbH

Quellenstraße 110, A-1100 Wien

T. +43(0)1 489 3961-0

F. +43(0)1 489 3961-7

mail@szabo-scandic.com

www.szabo-scandic.com

[linkedin.com/company/szaboscandic](https://www.linkedin.com/company/szaboscandic) 

GFR α -2 (IN) (GDNFRb) (Neurturin receptor) . Rabbit Polyclonal Antibody
Rabbit anti-Glial Cell Derived Neurotrophic Factor Receptor α -2 (Second Intracellular Loop), Human, Mouse, Rat

BACKGROUND

Members of the glial cell line-derived neurotrophic factor (GDNF) family, including GDNF and neurturin (NTN)¹, play key roles in the control of vertebrate neuron survival and differentiation. Physiological responses to NTN require the presence of a novel glycosylphosphatidylinositol linked protein NTNR α , which is a cell surface receptor for NTN^{2,3}. The cDNAs encoding NTNR α from human, rat, chicken, and mouse have been cloned recently²⁻⁷. NTNR α was also termed GDNFR β , Ret ligand 2 (RETL2) or TGF- β -related neurotrophic factor receptor 2 (TrnR2)⁴⁻⁷ and nominated as GFR α -2 recently⁸. GFR α -2 binds NTN and mediates activation of RET receptor tyrosine kinase by both NTN and GDNF. Thus, NTN, GFR α -2, and the Ret PTK form a complex to transduce NTN signal and to mediate NTN function.

ORDERING INFORMATION

CATALOG NUMBER
X1139P

SIZE
100 μ g
FORM
Unconjugated

HOST/CLONE
Rabbit

FORMULATION
Provided in phosphate buffered saline solution containing 0.02% sodium azide as a preservative

CONCENTRATION
See vial for concentration

ISOTYPE
IgG

APPLICATIONS
Western Blot

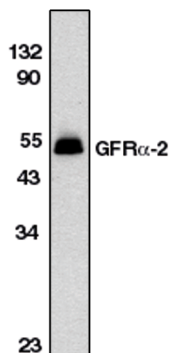
SPECIES REACTIVITY
Human, Mouse, Rat

ACCESSION NUMBER
Human O00451
Mouse O08842

IMMUNOGEN

Synthetic peptide corresponding to amino acids 377 to 391 of human GFR α -2. This sequence is identical to those of the mouse and rat.

Western blot analysis using GFR α -2 antibody on HeLa total cell lysate.



POSITIVE CONTROL/TISSUE EXPRESSION

HeLa whole cell lysate

COMMENTS

Detects GFR α -2 by Western blot analysis at 0.25 to 0.5 μ g/ml. Detects an approximately 52 kDa band in HeLa cell lysate. Optimal concentration should be evaluated by serial dilutions.

PURIFICATION

Antigen Immunoaffinity Purification

SHIP CONDITIONS

Ship at ambient temperature, freeze upon arrival

STORAGE CUSTOMER

Product should be stored at -20°C. Aliquot to avoid freeze/thaw cycles

STABILITY

Products are stable for one year from purchase when stored properly

REFERENCES

1. Kotzbauer, P.T., et al. Neurturin, a relative glial-cell-line-derived neurotrophic factor. *Nature* 1996, 384, 467-470
2. Klein, R.D., et al. A GPI-linked protein that interacts with Ret to form a candidate neurturin receptor. *Nature* 1997, 387, 717-721
3. Buj-Bello, A., et al. Neurturin responsiveness requires a GPI-linked receptor and the Ret receptor tyrosine kinase. *Nature* 1997, 387, 721-724
4. Baloh, R.H., et al. TrnR2, a novel receptor that mediates neurturin and GDNF signaling through Ret. *Neuron* 1997, 18, 793-802
5. Sanicola, M., et al. Glial cell line-derived neurotrophic factor-dependent RET activation can be mediated by two different cell-surface accessory proteins. *Proc Natl Acad Sci USA* 1997, 94, 6238-6243
6. Suvanto, P., et al. Cloning, mRNA distribution and chromosomal localisation of the gene for glial cell line-derived neurotrophic factor receptor beta, a homologue to GDNFR-alpha. *Hum Mol Genet* 1997, 6, 1267-1273
7. Wang, C.Y., et al. Cloning and characterization of glial cell line-derived neurotrophic factor receptor-B: a novel receptor for members of glial cell line-derived neurotrophic factor family of neurotrophic factors. *Neuroscience* 1998 Mar, 83(1), 7-14
8. Nomenclature Committee. Nomenclature of GPI-linked receptors for the GDNF ligand family. GFR α . *Neuron* 1997, 19, 485

PRODUCT SPECIFIC REFERENCES