



SZABO SCANDIC

Part of Europa Biosite

Produktinformation



Forschungsprodukte & Biochemikalien



Zellkultur & Verbrauchsmaterial



Diagnostik & molekulare Diagnostik



Laborgeräte & Service

Weitere Information auf den folgenden Seiten!
See the following pages for more information!



Lieferung & Zahlungsart

siehe unsere [Liefer- und Versandbedingungen](#)

Zuschläge

- Mindermengenzuschlag
- Trockeneiszuschlag
- Gefahrgutzuschlag
- Expressversand

SZABO-SCANDIC HandelsgmbH

Quellenstraße 110, A-1100 Wien

T. +43(0)1 489 3961-0

F. +43(0)1 489 3961-7

mail@szabo-scandic.com

www.szabo-scandic.com

[linkedin.com/company/szaboscandic](https://www.linkedin.com/company/szaboscandic) 

CCR8 (EL) (HIV and chemokine receptor). Rabbit Polyclonal Antibody
C-C chemokine receptor type 8; Chemokine receptor-like 1; CDw198; GPR-Cy6

BACKGROUND

CCR8 is one of the chemokine receptors that are required as coreceptors for HIV infection. The genes encoding human and murine CCR8 were cloned and designated TER1, CKR-L1, and ChemR1¹⁻⁴. The encoded seven transmembrane protein was identified as the receptor for human CC chemokine I-309 and renamed CCR8. Recently, CCR8 was found to serve as a coreceptor for diverse T-cell tropic, dual-tropic and macrophage-tropic HIV-1 strains⁵. CCR8 mediates CC chemokine I-309 induced monocyte chemoattraction and HIV-1 envelope fusion and virus infection, which can be prevented by the CCR8 ligand I-309. CCR8 is expressed in spleen, thymus and T lymphoblastic cell lines.

ORDERING INFORMATION

CATALOG NUMBER
X1145P

SIZE
100 µg
FORM
Unconjugated

HOST/CLONE
Rabbit

FORMULATION
Provided in phosphate buffered saline solution containing 0.02% sodium azide as a preservative

CONCENTRATION
See vial for concentration

ISOTYPE
IgG

APPLICATIONS
Western Blot

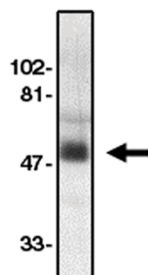
SPECIES REACTIVITY
Human

ACCESSION NUMBER
Human P51685

IMMUNOGEN

Antibody raised against a synthetic peptide corresponding to amino acids 183 to 201 of the human CCR8. Peptide sequence is located in the second extracellular loop.

Western blot analysis using anti-CCR8 (EL) antibody at 1 µg/ml on human spleen tissue lysates



POSITIVE CONTROL/TISSUE EXPRESSION

Human spleen tissue lysate

COMMENTS

Detects CCR8 receptors by Western blot at 0.5 to 1 μ g/ml. Detects an approximately 50 kDa band in human spleen tissue lysate. Optimal concentration should be evaluated by serial dilutions.

PURIFICATION

Antigen Immunoaffinity Purification

SHIP CONDITIONS

Ship at ambient temperature, freeze upon arrival

STORAGE CUSTOMER

Product should be stored at -20°C. Aliquot to avoid freeze/thaw cycles

STABILITY

Products are stable for one year from purchase when stored properly

REFERENCES

1. Napolitano, M., et al. Molecular cloning of TER1, a chemokine receptor-like gene expressed by lymphoid tissues. *J. Immunol.* 1996, 157, 2759-2763
2. Zaballos, A., et al. Molecular cloning and RNA expression of two new human chemokine receptor-like genes. *Biochem. Biophys. Res. Commun.* 1996, 227, 846-853
3. Samson, M., et al. Molecular cloning and chromosomal mapping of a novel human gene, ChemR1, expressed in T lymphocytes and polymorphonuclear cells and encoding a putative chemokine receptor. *Eur. J. Immunol.* 1996, 26, 3021-3028
4. Goya, I., et al. Identification of CCR8 as the specific receptor for the human beta-chemokine I-309: cloning and molecular characterization of murine CCR8 as the receptor for TCA-3. *J. Immunol.* 1998, 160, 1975-1981
5. Horuk, R., et al. The CC chemokine I-309 inhibits CCR8-dependent infection by diverse HIV-1 strains. *J. Biol. Chem.* 1998, 273, 386-391

PRODUCT SPECIFIC REFERENCES