



SZABO SCANDIC

Part of Europa Biosite

Produktinformation



Forschungsprodukte & Biochemikalien



Zellkultur & Verbrauchsmaterial



Diagnostik & molekulare Diagnostik



Laborgeräte & Service

Weitere Information auf den folgenden Seiten!
See the following pages for more information!



Lieferung & Zahlungsart

siehe unsere [Liefer- und Versandbedingungen](#)

Zuschläge

- Mindermengenzuschlag
- Trockeneiszuschlag
- Gefahrgutzuschlag
- Expressversand

SZABO-SCANDIC HandelsgmbH

Quellenstraße 110, A-1100 Wien

T. +43(0)1 489 3961-0

F. +43(0)1 489 3961-7

mail@szabo-scandic.com

www.szabo-scandic.com

[linkedin.com/company/szaboscandic](https://www.linkedin.com/company/szaboscandic) 



Bub1 beta-CT. Sheep Polyclonal Antibody
Mitotic checkpoint kinase MAD3L

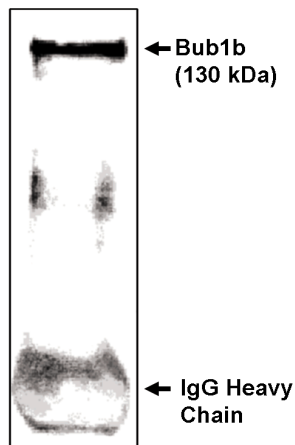
BACKGROUND

Bub1, a mitotic checkpoint gene first identified in yeast, ensures proper chromosome segregation by delaying anaphase until chromosomes are properly aligned on the mitotic spindle. Mutations in the mitotic spindle assembly checkpoint genes, like yeast Bub1, cause cells to exit mitosis without proper chromosome attachment/alignment, resulting in aneuploidy. Aneuploidy is a form of genetic instability involved in cancer. Recently, a novel homologue of the murine Bub1 gene has been identified and named Bub1b. The yeast mitotic checkpoint pathway is unresolved, but the mammalian pathway remains even less clear. It is important to investigate the role of the Bub1 genes in the mammalian checkpoint as they have been implicated in carcinogenesis, namely colon carcinomas. The aneuploidy and chromosome instability characterizing some tumors is thought to be caused by mutations in Bub1.

IMMUNOGEN

Recombinant protein corresponding to amino acids 883-1052 of the mouse Bub1b protein.

Immunoprecipitation/
Western blot analysis
using Bub1b-CT antibody on
NIH/3T3 cells synchronized to
obtain mostly mitotic cells as
determined by flow
cytometry.



ORDERING INFORMATION

CATALOG NUMBER

X1161P

SIZE

250 µg

FORM

Unconjugated

HOST/CLONE

Sheep

FORMULATION

Provided as solution in phosphate buffered saline with 0.08% sodium azide

CONCENTRATION

See vial for concentration

ISOTYPE

IgG

APPLICATIONS

Western Blot, Immunohistochemistry

SPECIES REACTIVITY

Mouse

ACCESSION NUMBER

Mouse Q9Z1S0

POSITIVE CONTROL/TISSUE EXPRESSION

Mitotic NIH/3T3 cells

COMMENTS

Antibody detects Bub1b in mitotic cells separated from NIH/3T3 cells by IP/Western blot (1-10 μ g/ml) analysis. Detects a 130 kDa band. Optimal concentration should be evaluated by serial dilutions.

PURIFICATION

Ammonium Sulfate Precipitation

SHIP CONDITIONS

Ship at ambient temperature, freeze upon arrival

STORAGE CUSTOMER

Product should be stored at -20°C. Aliquot to avoid freeze/thaw cycles

STABILITY

Products are stable for one year from purchase when stored properly

REFERENCES

1. Myrie, K.A., et al. Mutation and expression analysis of human Bub1 and Bub1b in aneuploid breast cancer cell lines. *Cancer Lett.* 2000, 152, 193-199.
2. Davenport, J.W., et al. The mouse mitotic checkpoint gene bub1b, a novel bub1 family member, is expressed in a cell cycle-dependent manner. *Genomics* 1999, 55, 113-117.

PRODUCT SPECIFIC REFERENCES