



SZABO SCANDIC

Part of Europa Biosite

Produktinformation



Forschungsprodukte & Biochemikalien



Zellkultur & Verbrauchsmaterial



Diagnostik & molekulare Diagnostik



Laborgeräte & Service

Weitere Information auf den folgenden Seiten!
See the following pages for more information!



Lieferung & Zahlungsart

siehe unsere [Liefer- und Versandbedingungen](#)

Zuschläge

- Mindermengenzuschlag
- Trockeneiszuschlag
- Gefahrgutzuschlag
- Expressversand

SZABO-SCANDIC HandelsgmbH

Quellenstraße 110, A-1100 Wien

T. +43(0)1 489 3961-0

F. +43(0)1 489 3961-7

mail@szabo-scandic.com

www.szabo-scandic.com

[linkedin.com/company/szaboscandic](https://www.linkedin.com/company/szaboscandic) 

chx 10 (Visual system homeobox 2) (NT). Sheep Polyclonal Antibody
Ceh-10 homeodomain-containing homolog

BACKGROUND

Chx10 is a 46kDa homeodomain protein of the paired-like class that is essential for development of the mammalian eye. Mutations in Chx10 cause microphthalmia, a cause of congenital blindness in humans, and the ocular retardation (or) phenotype in mice. In the developing mouse retina Chx10 is expressed in retinal progenitors, while in the mature retina, Chx10 expression becomes restricted to bipolar neurons. Concurrent with these expression patterns, the Chx10^{-/-} (or) retina is thin due to a defect in proliferation of retinal progenitors, and lacks bipolar neurons. Chx10 is also expressed in the developing brainstem, thalamus, and spinal cord.

ORDERING INFORMATION

CATALOG NUMBER

X1180P

SIZE

250 μ g

FORM

Unconjugated

HOST/CLONE

Sheep

FORMULATION

Provided as solution in phosphate buffered saline with 0.08% sodium azide

CONCENTRATION

See vial for concentration

ISOTYPE

IgG

APPLICATIONS

Western Blot, Immunohistochemistry (Frozen Sections)

SPECIES REACTIVITY

Human, Mouse, Rat, Chicken

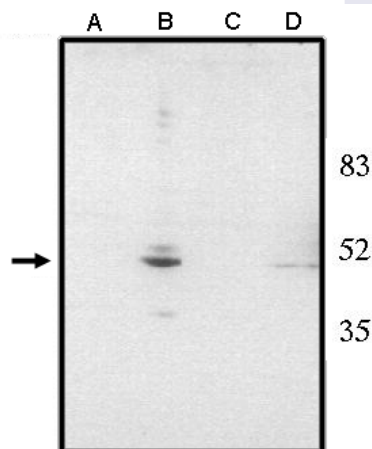
ACCESSION NUMBER

Human P58304

IMMUNOGEN

Antibody raised against a recombinant protein corresponding to amino acids 1 to 131 derived from the N terminal of the human Chx10 protein conjugated to KLH.

Western blot analysis using anti-Chx10 (NT) antibody at 1 μ g/ml on rat liver (A), retina tissue lysate (B), mouse liver (C) and retina (D) tissue lysate.



POSITIVE CONTROL/TISSUE EXPRESSION

Rat or mouse retinal tissue lysate. Suitable for use against recombinant proteins conjugated to OVA, GST, His tags and other.

COMMENTS

Detects Chx10 by Western blot at 0.5 to 1 $\mu\text{g/ml}$. Detects a 46 kDa band in mouse and rat retinal tissue lysates. Optimal concentration should be evaluated by serial dilutions. Suitable for use against recombinant proteins conjugated to OVA, GST, His tags and other.

PURIFICATION

Ammonium Sulfate Precipitation

SHIP CONDITIONS

Ship at ambient temperature, freeze upon arrival

STORAGE CUSTOMER

Product should be stored at -20°C . Aliquot to avoid freeze/thaw cycles

STABILITY

Products are stable for one year from purchase when stored properly

REFERENCES

1. Liu, I.S., et al. Developmental expression of a novel murine homeobox gene (Chx10): evidence for roles in determination of the neuroretina and inner nuclear layer. *Neuron* 1994, 13, 377-393
2. Chen, C.M. & Cepko, C.L. Expression of Chx10 and Chx10-1 in the developing chicken retina. *Mech. Dev.* 2000, 90, 293-297
3. Ferda Percin, E., et al. Human microphthalmia associated with mutations in the retinal homeobox gene CHX10. *Nat. Genet.* 2000, 25, 397-401
4. Nittner, D., et al. Synthetic lethality between Rb, p53 and Dicer or miR-17-92 in retinal progenitors suppresses retinoblastoma formation. *Nature Cell Biology* (2012), 14, 958-965
5. Kay, J.N., et al. Neurod6 expression defines new retinal amacrine cell subtypes and regulates their fate. *Nature Neuroscience* (2011), 14, 965-972
6. Eiraku, M., et al. Self-organizing optic-cup morphogenesis in three-dimensional culture. *Nature* (2011), 472, 51-56
7. Pierfelice, T.J., et al. Notch3 Activation Promotes Invasive Glioma Formation in a Tissue Site-Specific Manner. *Cancer Res.*, 71, 1115-1125 (2011).

PRODUCT SPECIFIC REFERENCES

1. Qiu, F., et al, 'A Comprehensive Negative Regulatory Program Controlled by Brn3b to Ensure Ganglion Cell Specification from Multipotential Retinal Precursors' *Journal of Neuroscience* 2008, 28, , 3392-3403
2. Elshatory, Y., et a, 'Islet-1 Controls the Differentiation of Retinal Bipolar and Cholinergic Amacrine Cells' *Journal of Neuroscience* 2007, 27, , 12707-12720
3. Osakada, F., et al, 'Wnt Signaling Promotes Regeneration in the Retina of Adult Mammals' *Journal of Neuroscience* 2007, 27, , 4210-4219
4. Nittner, D., et al. 'Synthetic lethality between Rb, p53 and Dicer or miR-17-92 in retinal progenitors suppresses retinoblastoma formation.' *Nature Cell Biology* (2012), 14, 958-965
5. Tiwari, S., et al. 'Meckelin 3 Is Necessary for Photoreceptor Outer Segment Development in Rat Meckel Syndrome.' *PLoS One*, 8, e59306 (2013)
6. Sherry, D.M., et al. 'Differential Developmental Deficits in Retinal Function in the Absence of either Protein Tyrosine Sulfotransferase-1 or -2.' *PLoS One*, 7, e39702 (2012)
7. Luo, H., et al. 'Forkhead box N4 (Foxn4) activates Dll4-Notch signaling to suppress photoreceptor cell fates of early retinal progenitors.' *Proc. Natl. Acad. Sci. USA*, 109, E553-E562 (2012)
8. Haynes, T., et al. 'Complement anaphylatoxin C3a is a potent inducer of embryonic chick retina regeneration.' *Nat. Commun.* 4, 2312 (2013)
9. Wakabayashi, T., et al. 'Prolonged Expression of Puma in Cholinergic Amacrine Cells During the Development of Rat Retina.' *J. Histochem. Cytochem.*, 60, 777-788 (2012)
10. Bai, L., et al. 'Birth of Cone Bipolar Cells, but Not Rod Bipolar Cells, Is Associated with Existing RGCs.' *PLoS One*, 9, e83686 (2014)
11. Nakano, T., et al. 'Self-formation of optic cups and storable stratified neural retina from human ESCs.' *Cell Stem Cell* (2012) 10, 771-785