



SZABO SCANDIC

Part of Europa Biosite

Produktinformation



Forschungsprodukte & Biochemikalien



Zellkultur & Verbrauchsmaterial



Diagnostik & molekulare Diagnostik



Laborgeräte & Service

Weitere Information auf den folgenden Seiten!
See the following pages for more information!



Lieferung & Zahlungsart

siehe unsere [Liefer- und Versandbedingungen](#)

Zuschläge

- Mindermengenzuschlag
- Trockeneiszuschlag
- Gefahrgutzuschlag
- Expressversand

SZABO-SCANDIC HandelsgmbH

Quellenstraße 110, A-1100 Wien

T. +43(0)1 489 3961-0

F. +43(0)1 489 3961-7

mail@szabo-scandic.com

www.szabo-scandic.com

[linkedin.com/company/szaboscandic](https://www.linkedin.com/company/szaboscandic) 



Rin. Mouse Monoclonal Antibody

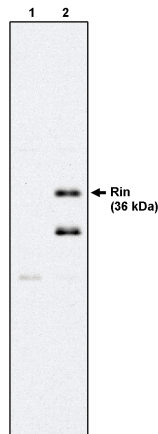
BACKGROUND

Rit and its neuron-specific homologue, Rin, define a recently discovered subfamily of Ras-related GTPases. Rit and Rin are membrane-associated in spite of the fact that they lack a CAAX box or similar C-terminal lipidation motif. Rit and Rin display 64% amino acid sequence identity and share a unique nine amino acid effector domain (DPTIEDAYK) that is 100% conserved between the murine and human proteins. Although the effector domain sequences of Rit and Rin are very similar to that of Ras, Rit and Rin have been shown to interact with the known Ras-binding proteins RalGDS, Rlf and AF-6, but not the Raf kinases, RIN1 or the p110 subunit of PI3 kinase. For this reason, it has been suggested that Rit and Rin may play important roles in the regulation of signaling pathways distinct from those controlled by Ras.

IMMUNOGEN

Hybridoma produced by the fusion of splenocytes from mice immunized with full-length recombinant human Rin protein and mouse myeloma cells.

Western blot analysis using Rin antibody (Cat. No. X1187M) on 293 cells expressing HA-tagged Rit (1) and HA-tagged Rin (2).



ORDERING INFORMATION

CATALOG NUMBER
X1187M

SIZE
100 µg

FORM
Unconjugated

HOST/CLONE
Mouse Clone 27G2

FORMULATION
Provided as sterile filtered solution containing 20 mM sodium phosphate, 150 mM sodium chloride, 50% glycerol at pH 7.5 and 3 mM sodium azide

CONCENTRATION
See vial for concentration

ISOTYPE
IgG2b

APPLICATIONS
Western Blot

SPECIES REACTIVITY
Human, Mouse

ACCESSION NUMBER

Human Q13671

Mouse Q921Q7

POSITIVE CONTROL/TISSUE EXPRESSION

COMMENTS

Antibody detects recombinant Rin protein expressed in 293 cells by Western blot analysis at a concentration of 0.5 to 1 $\mu\text{g/ml}$. Does not cross-react with Rit protein. Optimal concentration should be evaluated by serial dilutions.

PURIFICATION

SHIP CONDITIONS

Ship at ambient temperature, freeze upon arrival

STORAGE CUSTOMER

Product should be stored at -20°C . Aliquot to avoid freeze/thaw cycles

STABILITY

Products are stable for one year from purchase when stored properly

REFERENCES

1. Rusyn, E.V., et al. Rit, a non-lipid-modified Ras-related protein, transforms NIH3T3 cells without activating the ERK, JNK, p38 MAPK or PI3K/Akt pathways. *Oncogene* 2000, 19, 4685-4694.
2. Lee, C.H. et al. Rin, a neuron-specific and calmodulin-binding small G-protein, and Rit define a novel subfamily of ras proteins. *J. Neurosci.* 1996, 16, 6784-6794.
3. Shao, H., et al. Biochemical characterization of the Ras-related GTPases Rit and Rin. *Arch. Biochem. Biophys.* 1999, 371, 207-219.

PRODUCT SPECIFIC REFERENCES