



# SZABO SCANDIC

Part of Europa Biosite

## Produktinformation



Forschungsprodukte & Biochemikalien



Zellkultur & Verbrauchsmaterial



Diagnostik & molekulare Diagnostik



Laborgeräte & Service

Weitere Information auf den folgenden Seiten!  
See the following pages for more information!



### Lieferung & Zahlungsart

siehe unsere [Liefer- und Versandbedingungen](#)

### Zuschläge

- Mindermengenzuschlag
- Trockeneiszuschlag
- Gefahrgutzuschlag
- Expressversand

### SZABO-SCANDIC HandelsgmbH

Quellenstraße 110, A-1100 Wien

T. +43(0)1 489 3961-0

F. +43(0)1 489 3961-7

[mail@szabo-scandic.com](mailto:mail@szabo-scandic.com)

[www.szabo-scandic.com](http://www.szabo-scandic.com)

[linkedin.com/company/szaboscandic](https://www.linkedin.com/company/szaboscandic) 

p34 cdc-2 nuclear protein. Mouse Monoclonal Antibody

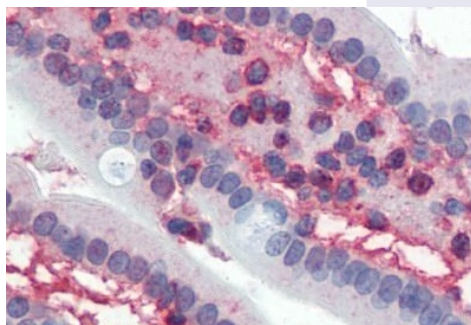
**BACKGROUND**

p34(Cdc2) kinase is an essential nuclear protein for mitosis in human cells. During the prophase/metaphase transition the inactive phosphorylated form of p34(cdc2) is dephosphorylated to make the active form of the protein. This dephosphorylation is performed by the p80 (cdc25) dual-specificity phosphatase. The regulatory subunit of p34(cdc2) is cyclin B, a 47-52 kDa protein. The p34(cdc2) protein is the catalytic subunit of the M phase-promoting factor (MPF) which is an intracellular factor responsible for entry into M phase. Three mechanisms are responsible for the activation of MPF at the onset of mitosis: binding of p34(cdc2) to cyclin B, a series of phosphorylation/dephosphorylation events on the two subunits and translocation of the complex to the nucleus or microtubules.

**IMMUNOGEN**

Hybridoma produced by the fusion of splenocytes from BALB/c mice immunized with recombinant human p34.cdc2 fusion protein and mouse myeloma cells.

Immunohistochemical staining of formalin-fixed paraffin-embedded human small intestine tissue after heat induced antigen retrieval. Antibody used at 10 µg/ml.



**ORDERING INFORMATION**

**CATALOG NUMBER**

X1236M

**SIZE**

100 µg

**FORM**

Unconjugated

**HOST/CLONE**

Mouse Clone POH-1

**FORMULATION**

Provided as solution in phosphate buffered saline with 0.08% sodium azide

**CONCENTRATION**

See vial for concentration

**ISOTYPE**

IgG2a

**APPLICATIONS**

Immunohistochemistry (Paraffin Sections), Immunocytochemistry, Western Blot, Immunoprecipitation

**SPECIES REACTIVITY**

Human, Bovine, Xenopus, Mouse, Rat

**ACCESSION NUMBER**

Human P06493

**POSITIVE CONTROL/TISSUE EXPRESSION**

HeLa cell lysate

**COMMENTS**

Detects three bands within the 34 kDa region corresponding to p34 and its cleavage products. Can also be used for IHC on paraffin-embedded tissue (10  $\mu$ g/ml) as well as immunocytochemistry and immunoprecipitation. Optimal concentration should be evaluated by serial dilutions.

**PURIFICATION**

Protein A/G Chromatography

**SHIP CONDITIONS**

Ship at ambient temperature, freeze upon arrival

**STORAGE CUSTOMER**

Product should be stored at -20°C. Aliquot to avoid freeze/thaw cycles

**STABILITY**

Products are stable for one year from purchase when stored properly

**REFERENCES**

1. Lukas, J., et al. Distinct forms of human CDC2 identified by novel monoclonal antibodies. *Eur. J. Biochem.* 1992, 207, 169-176
2. Borgne, A. & Meijer, L. Sequential dephosphorylation of p34(cdc2) on Thr-14 and Tyr-15 at the prophase/metaphase transition. *J. Biol. Chem.* 1996, 271, 27847-27854
3. Kao, G.D., et al. p34(Cdc2) kinase activity is excluded from the nucleus during the radiation-induced G<sub>2</sub> arrest in HeLa cells. *J. Biol. Chem.* 1999, 274, 34779-34784

**PRODUCT SPECIFIC REFERENCES**